

SKILL LEVEL



BEGINNER

multisized  
pattern...sizes  
6/8/10/12/14/16  
/18/20/22/24/26  
all together!

[www.hotpatterns.com](http://www.hotpatterns.com)<sup>tm</sup>  
patterns so hot they're smokin'...

HotPattern & fabric.com exclusive download  
Voodoo Chile Gored Skirt



Cast your own spell this Hallowe'en with this pretty but edgy skirt; this one needs a fluid knit fabric, like rayon, modal or bamboo knit. You'll also need an additional matching or contrast color stretchy knit with a good recovery for the waistband. Pull-on, raw edged, gently flared 8-gore skirt features asymmetric panels, a fold-over waistband, cascading ruffles, and finishes just below the knee with a 'ragged' hem. Wear this easy-peasy skirt with a simple slim-fit top or T-shirt and flat knee-high boots or pumps for a chic & fabulous look at Hallowe'en ...and the rest of the year too...

# Hot Patterns & fabric.com

## exclusive free download voodoo chile skirt instructions page 1 of 1

### SEAM ALLOWANCES & OTHER INFO

Seam allowances are 5/8" or 1.5 cm wide; all seams are sewn right sides together unless otherwise stated.

The waist is finished with a deep folded-over knit waistband; the bottom edges of the skirt panels & ruffles are left raw.

Skills needed include: seaming panels together; inserting ruffles; making & applying a doubled knit panel.

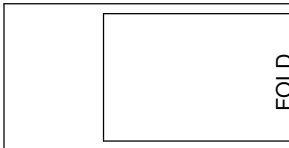
### ABOUT THIS STYLE

This skirt is an eight-gore pull-on style with a fit & flare silhouette, inserted ruffles and an asymmetric hemline.

As always, make & fit a muslin before you cut into your fabric...in this case, use a cheap fabric with a similar drape to your chosen fabric.

### SUGGESTED CUTTING LAYOUT FOR THE WAISTBAND

fold fabric in half, with selvedge to selvedge for this layout

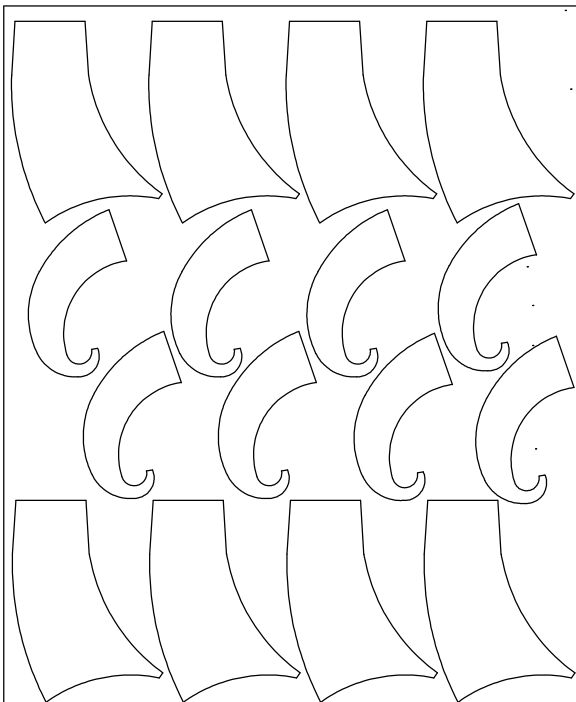


### FABRIC REQUIRED

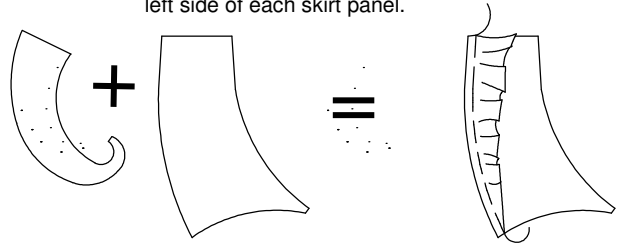
All sizes need around 2 yards/ 150 cm of fabric for this skirt, plus 1/2 yard/45cm of stretchy knit fabric. All fabric amounts are for 60" or 150cm wide fabric.

### SUGGESTED CUTTING LAYOUT FOR THE SKIRT

lay your fabric out flat & unfolded for this layout

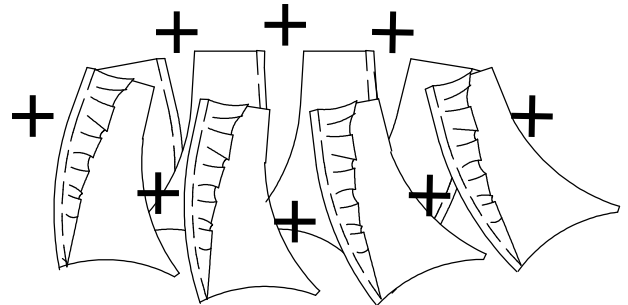


- 1 Join the ruffles to the right side of each of the eight skirt panels, making sure the ruffles end **EXACTLY** at the cut edges of the skirt panels. Press all the seams open, then towards the left side of each skirt panel.



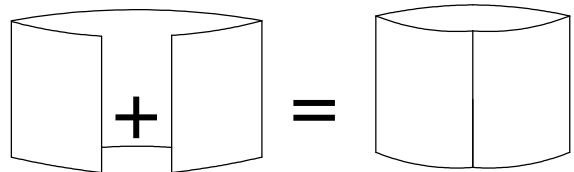
2a

Join the eight skirt panels to create the basic skirt shape, then press all the seams open.



3a

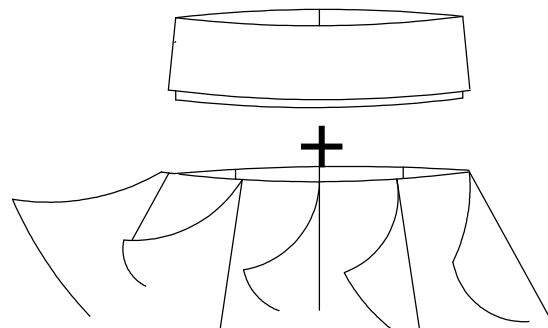
Join the short ends of the waistband piece to create a loop, and press this seam open.



3b

Wrong sides together, fold the waistband in half to create a double-thickness loop; matching the waistband seam to one of the panel seams on the skirt, join the bottom edge of the waistband to the top edge of the skirt, stretching the waistband to fit.

Press the seam allowances down towards the hem.



Finished, and gorgeous!

1

SIZE 26  
SIZE 24  
SIZE 22  
SIZE 20  
SIZE 18  
SIZE 16  
SIZE 14  
SIZE 12  
SIZE 10  
SIZE 8  
SIZE 6

SIZE 26  
SIZE 24  
SIZE 22  
SIZE 20  
SIZE 18  
SIZE 16  
SIZE 14  
SIZE 12  
SIZE 10  
SIZE 8  
SIZE 6

SIZE 6  
SIZE 8  
SIZE 10  
SIZE 12

SIZE 6  
SIZE 8

HIPLINE

*Hot Patterns*  
free download exclusively for  
**fabric.com**

voodoo chile skirt  
main skirt panel  
cut 8 panels  
RIGHT SIDE UP



3

SIZE 26

---

SIZE 24

---

SIZE 22

---

SIZE 20

---

SIZE 18

---

SIZE 16

---

SIZE 14

---

SIZE 12

---

SIZE 10

---

SIZE 8

---

SIZE 6

---

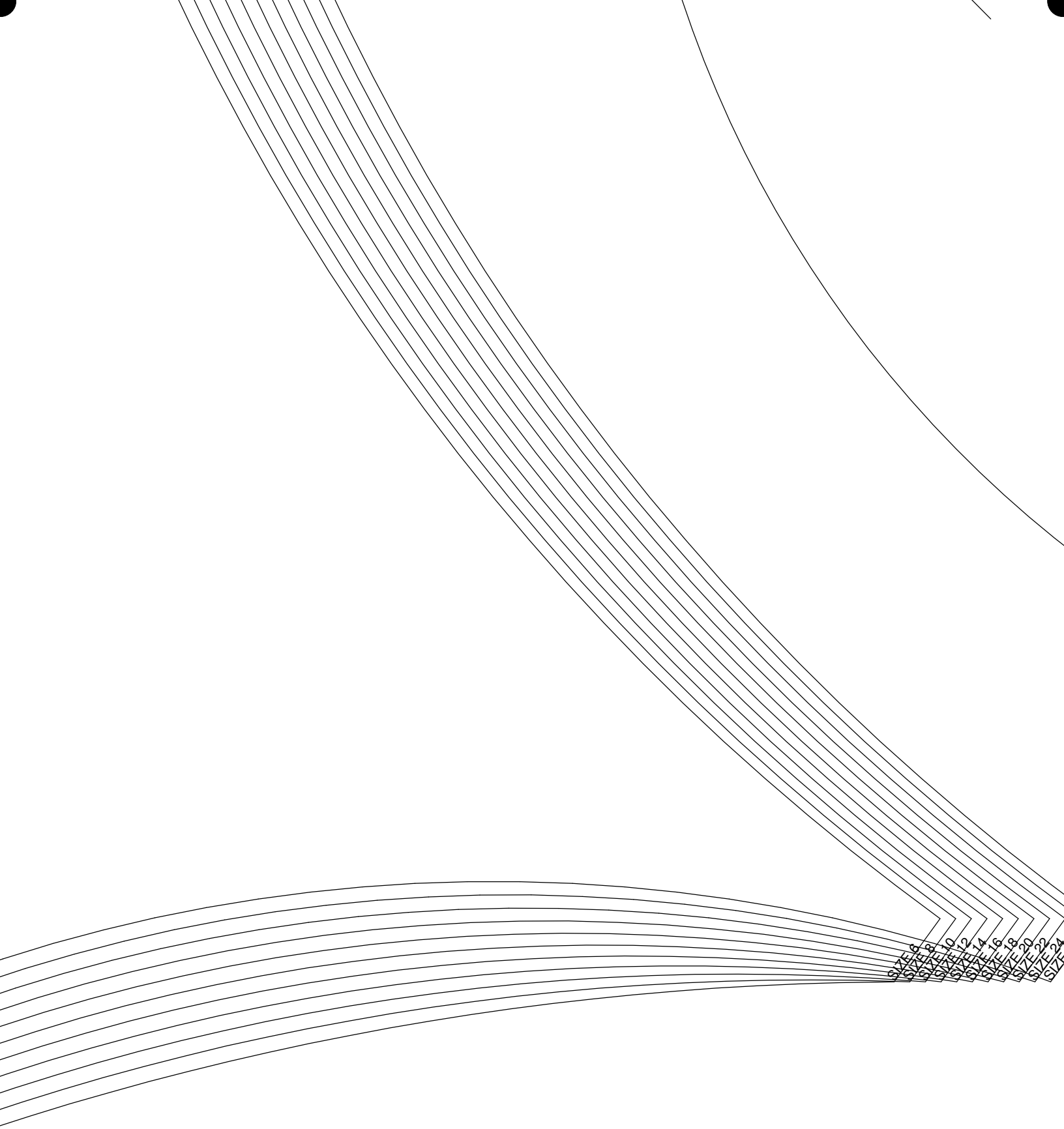
STRETCH DIRECTION \_\_\_\_\_

5

SIZE 10  
SIZE 12  
SIZE 14  
SIZE 16  
SIZE 18  
SIZE 20  
SIZE 22  
SIZE 24  
SIZE 26

*Hot Patterns*  
free download exclusively for  
**fabric.com**

voodoo chile skirt  
ruffle inserts  
cut 8 ruffles  
RIGHT SIDE UP






*Hot Patterns*

free download exclusively for

**fabric.com**

voodoo chile skirt

waistband panel

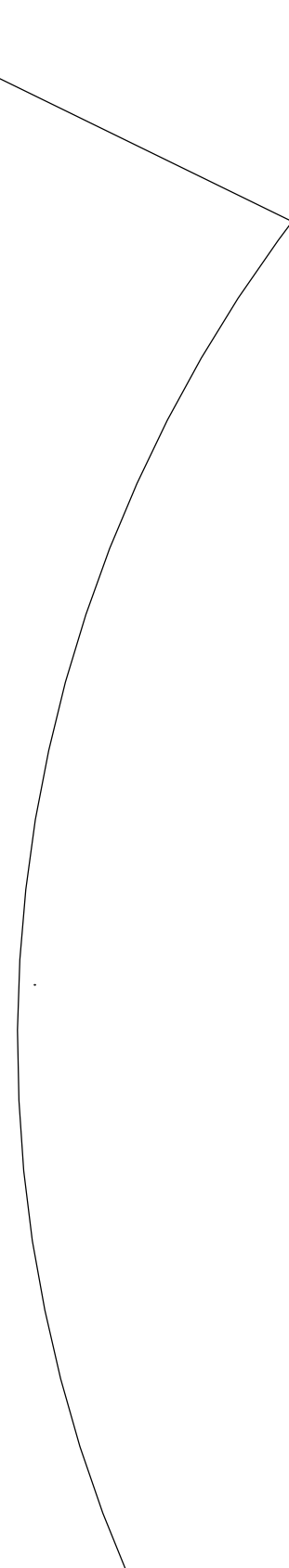
cut 1 on fold

in stretchy knit

**FOLD**

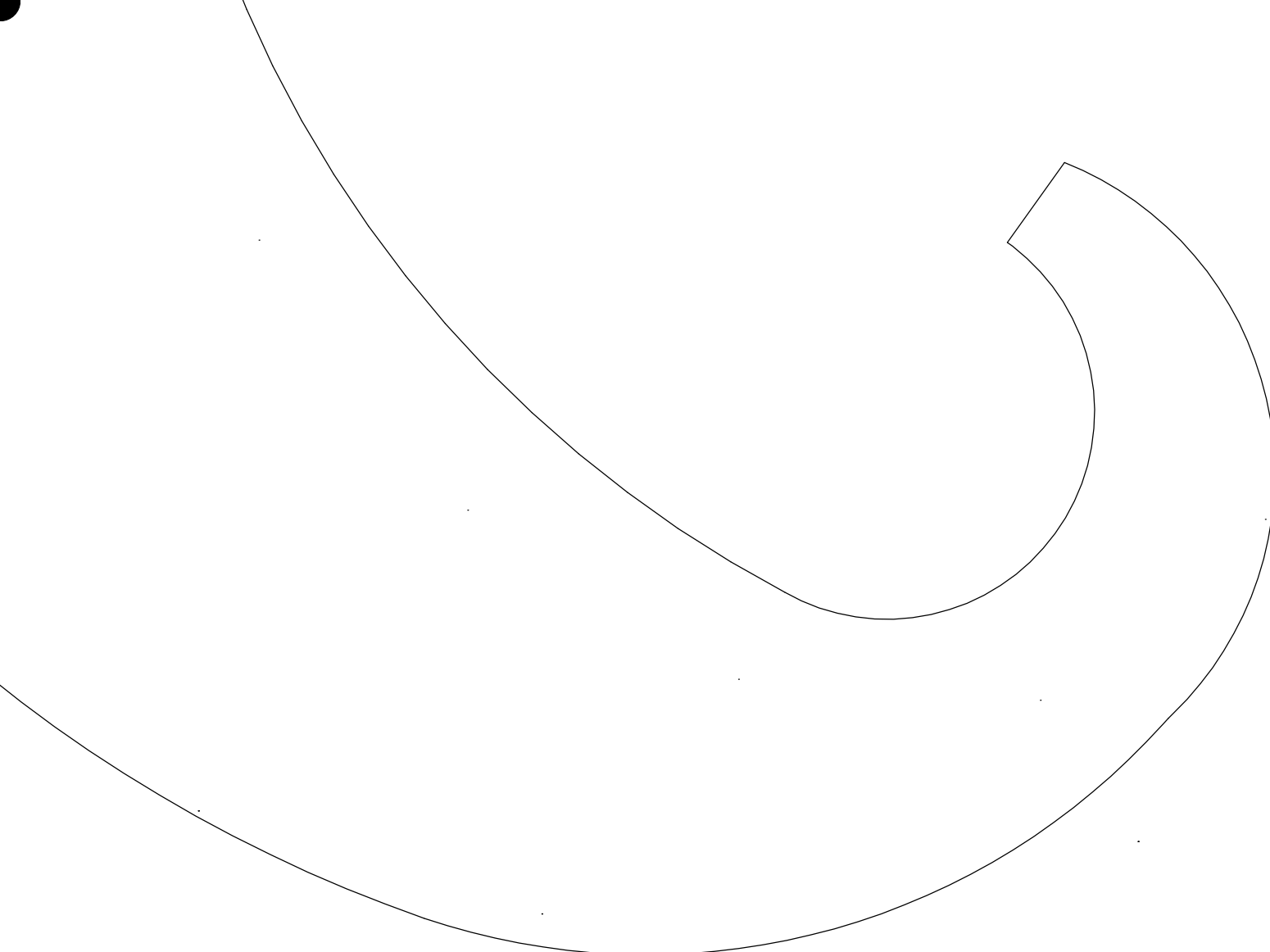
9

or  
m



1	5	9
2	6	10

The complex block contains a grid with numbers 1 through 10. The numbers 1, 2, 5, 6, 9, and 10 are placed at the corners of the grid cells. The number 3 is located above the top-right cell, and the number 4 is located to the left of the middle-right cell. The grid contains several curved lines and shapes, including a large curved line on the left, a curved line in the bottom-left, a curved line in the bottom-right, and a curved line in the middle-right. The number 10 is located in the bottom-right corner of the grid.



10