

CUT ON FOLD

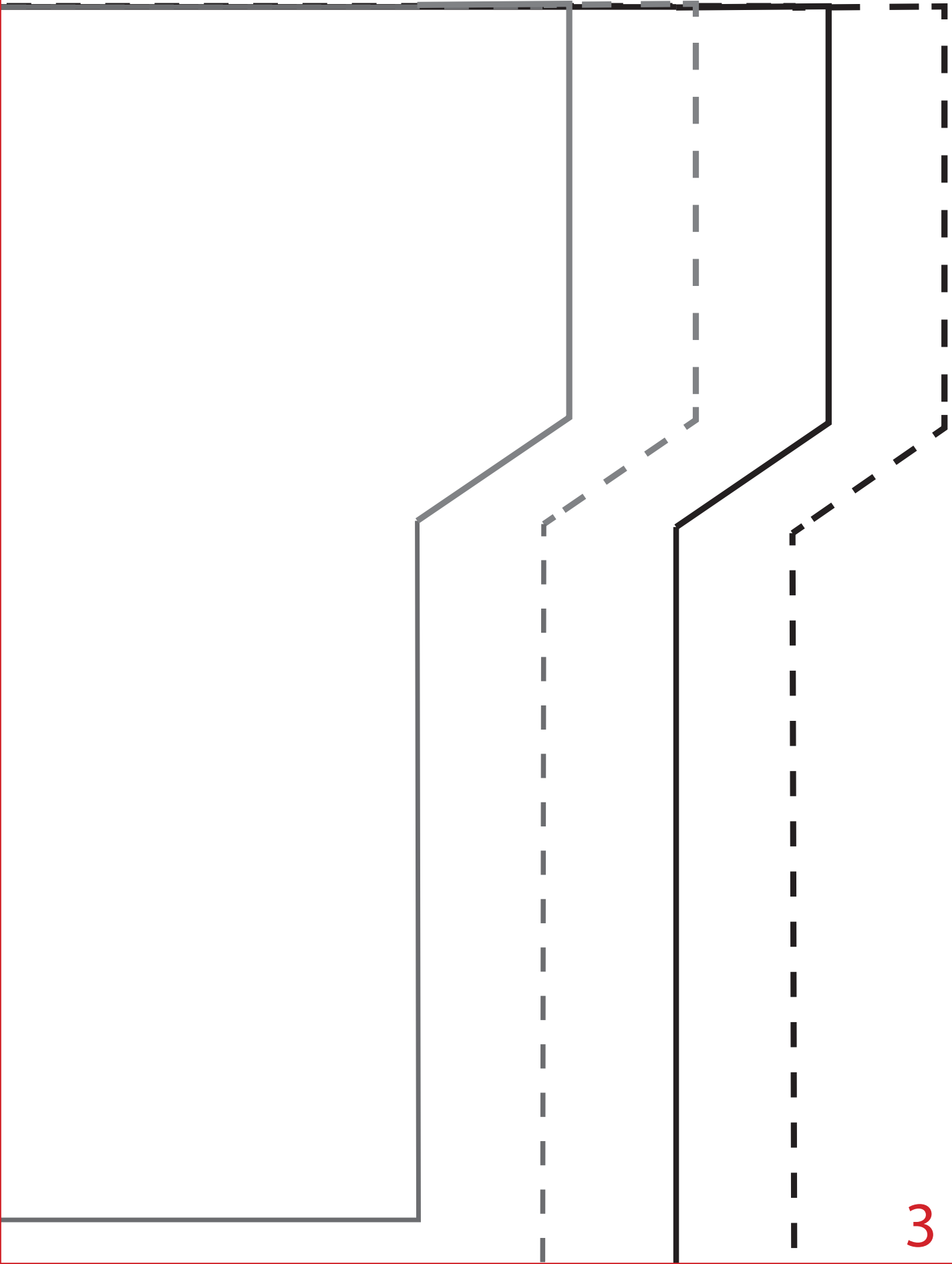


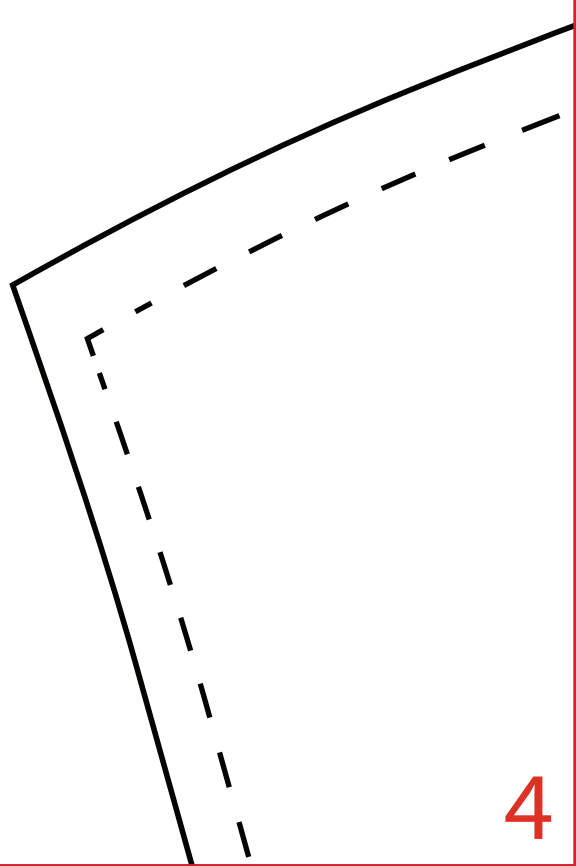
TUNIC SKIRT PIECE

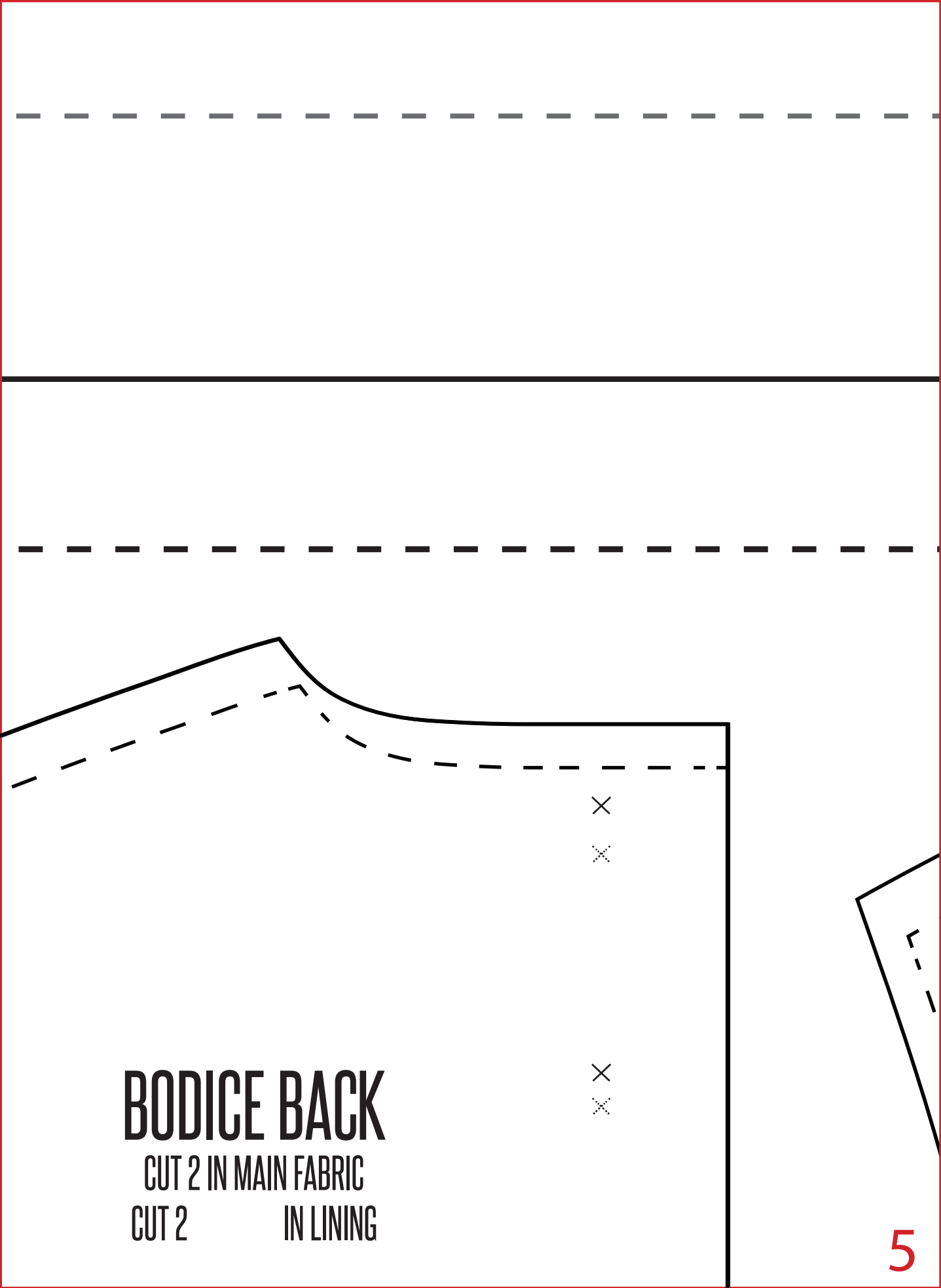
CUT 1 ON FOLD IN MAIN FABRIC

DRESS SKIRT PIECE

CUT 1 ON FOLD IN MAIN FABRIC



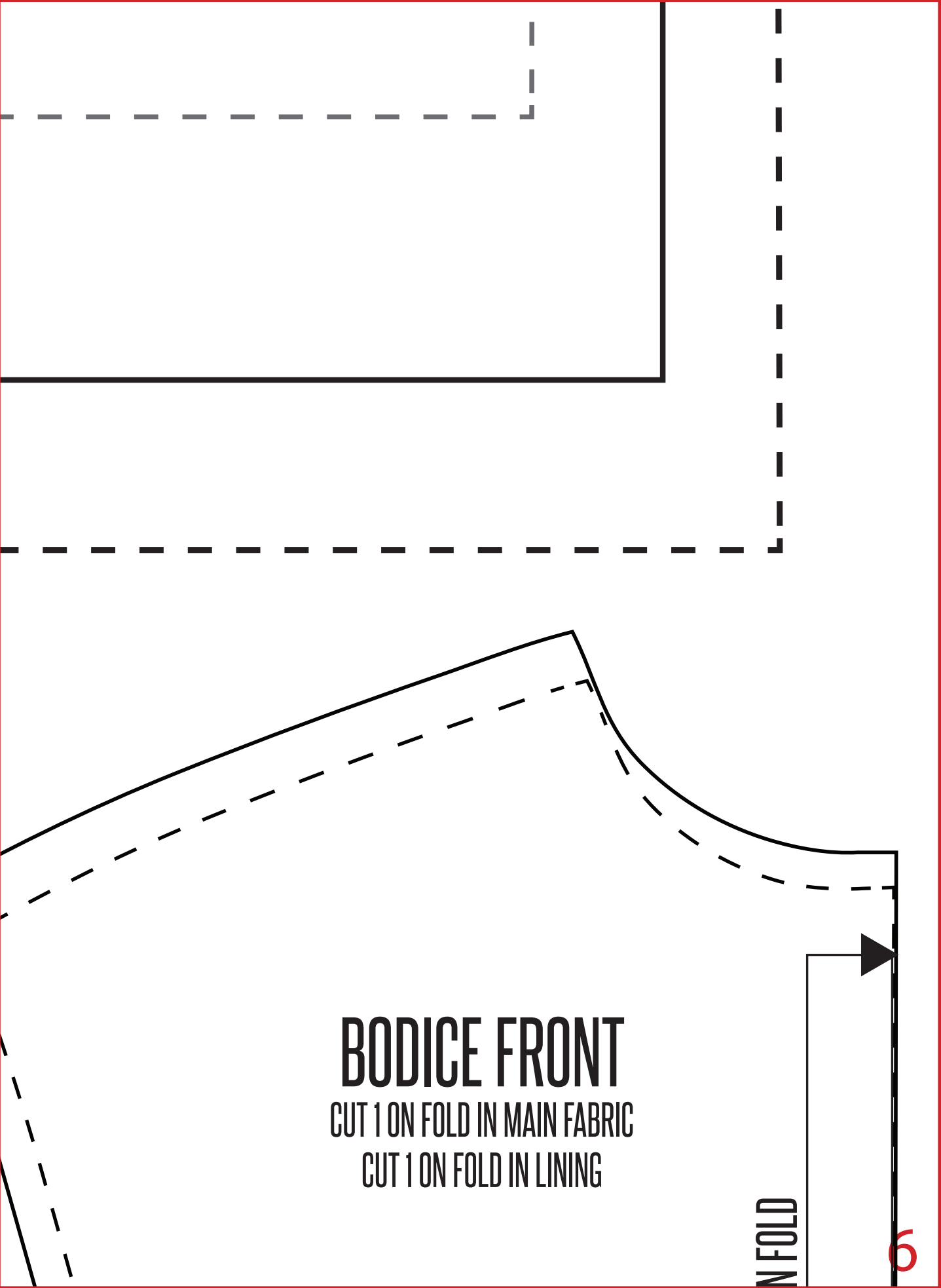




BODICE BACK

CUT 2 IN MAIN FABRIC

CUT 2 IN LINING



BODICE FRONT

CUT 1 ON FOLD IN MAIN FABRIC

CUT 1 ON FOLD IN LINING

ON FOLD

end of side seam for 2-3yrs si



end of side seam for



e
Bmth size

X

X

CUT

end of side seam for 2-3yrs size



end of side seam for 18mth size



MADE **by** TOYA

--- 18mths - 2yrs

— 2 - 3yrs