

Swoon
SEWING PATTERNS

A versatile, foldover style,
that is ideal for both casual and formal events.
A magnetic snap holds the shape of the bag,
folded perfectly in place, and a concealed
back zippered pocket keeps your small items
secure. Optional vinyl accents like a bottom
overlay and zipper pulls add a polished look to
an otherwise simple and classic bag.



heidi

Large Clutch

11" wide

8" tall

Small Wristlet

9" wide

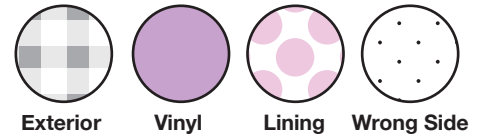
6.5" tall

FOLDOVER CLUTCH & WRISTLET

Bags & Photo by Jennifer Greene

When printing, do not select "Fit to Printable Area" or enlarge/shrink in any way.
Always print at "Actual Size" or 100%.

www.swoonpatterns.com • Feel free to sell your bags made with this pattern.
Copyright 2016 Swoon Sewing Patterns



Where to stitch

Instructions & Pattern *Heidi Foldover Clutch & Wristlet*

Materials Needed for Small Wristlet:

- 1/3 yard (or fat quarter) 44" wide quilting weight **exterior fabric**
- 1/2 yard 44" wide quilting weight **lining fabric**
- Scrap (10" x 10") of **vinyl fabric** (optional)
- 1/3 yard fusible fleece interfacing (Pellon Thermolam TP971)
- 1 yard fusible woven interfacing (Pellon Shapeflex SF101)
- One 18mm magnetic snap
- One 1/2" swivel clip and one 1/2" D-ring (*Wristlet Strap*)
- Two 9" all-purpose zippers
- Fabric glue (*Beacon Fabritac*)
- Coordinating thread

Materials Needed for Large Clutch:

- 1/2 yard 44" wide quilting weight **exterior fabric**
- 1/2 yard 44" wide quilting weight **lining fabric**
- Scrap (12" x 10") of **vinyl fabric** (optional)
- 1/3 yard fusible fleece interfacing (Pellon Thermolam TP971)
- 2 yards fusible woven interfacing (Pellon Shapeflex SF101)
- One 18mm magnetic snap
- Two 11" all-purpose zippers
- Fabric glue (*Beacon Fabritac*)
- Coordinating thread

Please note: All diagrams within these instructions are pertaining to the Large Clutch size. Small Wristlet measurements are noted in parentheses.

1) PREPPING

Print the pattern at "Actual size" or "100% scale". Cut out all paper pattern pieces along the solid black lines. Tape the two **Front Panel** pieces together, butting the lines together at the matching letters.

On the wrong side of the fabric, trace and cut the pieces from the **exterior fabric**, **lining fabric**, and vinyl (if applicable) as instructed on each pattern piece. The edges marked "FOLD" should run along the straight grain of the fabric. Repeat to cut the woven interfacing and fleece interfacing.

Additionally, measure and cut: (width x height)

Zipper Pulls (optional) • 1" x 12", Cut 1 Vinyl

Wristlet Strap (*Small Wristlet only*) • 2" x 16", Cut 1 Lining, Cut 1 Woven Interfacing

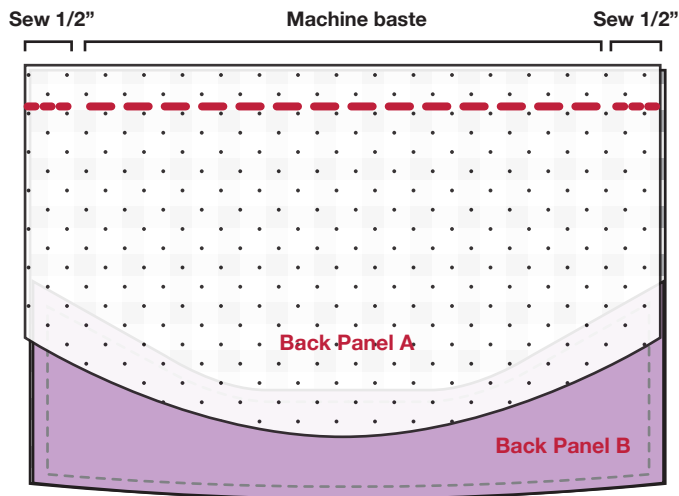
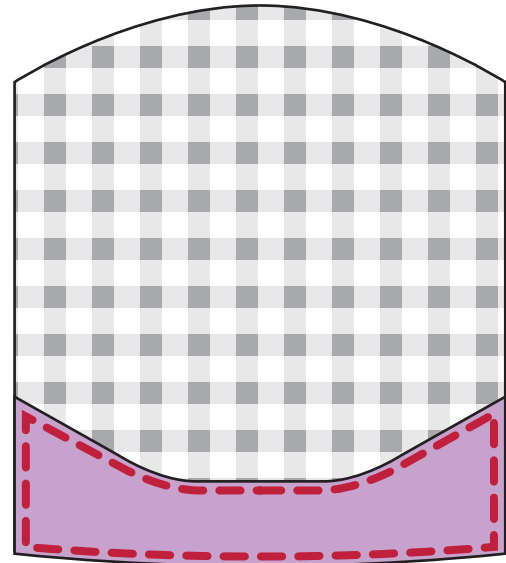
Fuse woven interfacing to the wrong side of all exterior and lining panels, except for the two **Pocket Panels**, matching all raw edges.

Trim 3/4" from the **side and bottom edges only** of both fleece interfacing panels. Then, trim 3/8" from the **top curved edge** of both. Lay a fleece panel, fusible side down, onto the wrong side of a **Lining Panel**, so that it is 3/8" from the top curved edge and 3/4" from the bottom and side edges. Fuse into place. Repeat to fuse the remaining fleece panel to the other **Lining Panel**.

2) ACCENT PANELS *(optional; skip if not using vinyl)*

Glue baste an **Accent Panel**, wrong side down, onto the right side of the **exterior Front Panel**, matching the bottom curved edge of the **Accent Panel** to the bottom edge of the **Front Panel**. Top stitch along the top curved edge of the **Accent Panel**, about 1/8" from the edge. Pivot and continue to machine baste along the three remaining edges.

Repeat to top stitch the remaining **Accent Panel** to the right side of **Back Panel B**.

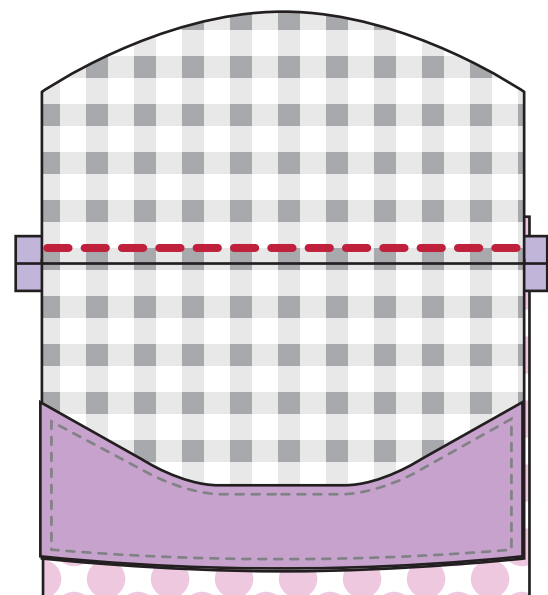


3) BACK POCKET

Pin **Back Panel A** to **Back Panel B**, right sides together and matching the *bottom straight edge* of **Back Panel A** to the *top straight edge* of **Back Panel B**. Sew along the matched edge only at 3/4" seam allowance, *for only 1/2"*. Back stitch and stitch again. Switch to a long basting stitch and continue sewing until you are 1/2" from the end. Switch back to a normal stitch length and finish sewing the remaining 1/2", back stitch and stitch again.

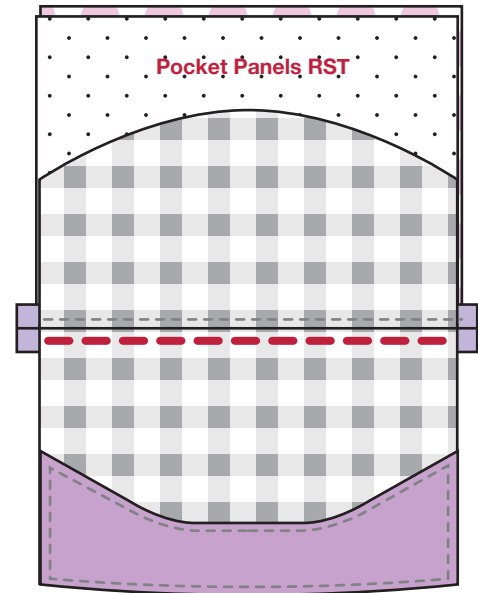
Press the seam allowance open. With the panels wrong side up, glue baste or pin a zipper face down and centered over the seam. The zipper stop at each end should be 1/2" from the ends of the seam.

Pin a **Pocket Panel** to the top seam allowance (the seam allowance against **Back Panel A**), right sides together (*Pocket Panel and seam allowance*) and matching the top long edge of the **Pocket Panel** to the long raw edge of the seam allowance. Flip the **Back Panel** right side up and top stitch along the zipper seam, *through Back Panel A*, about 1/4" from the seam. (You will be sewing through Back Panel A, the seam allowance, zipper and Pocket Panel.)

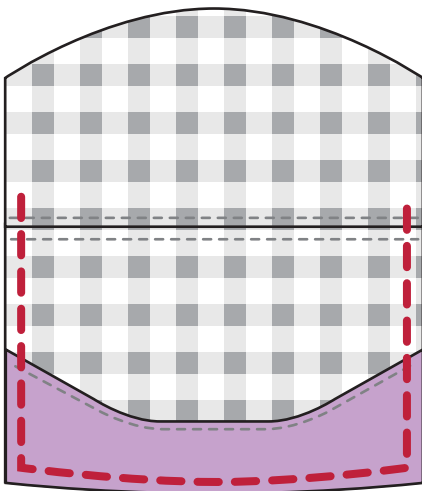


Flip the **Pocket Panel** up away from the zipper and press well. Pin it against **Back Panel A** to keep it out of the way for now.

Pin the remaining **Pocket Panel** to the bottom seam allowance (the seam allowance against **Back Panel B**), right sides together and matching the top long edge of the **Pocket Panel** to the long raw edge of the seam allowance. The **Pocket Panels** will be right sides together. Flip the **Back Panel** right side up and top stitch along the zipper seam, *through Back Panel B*, about 1/4" from the seam. (You will be sewing through Back Panel B, the seam allowance, zipper and Pocket Panel.)



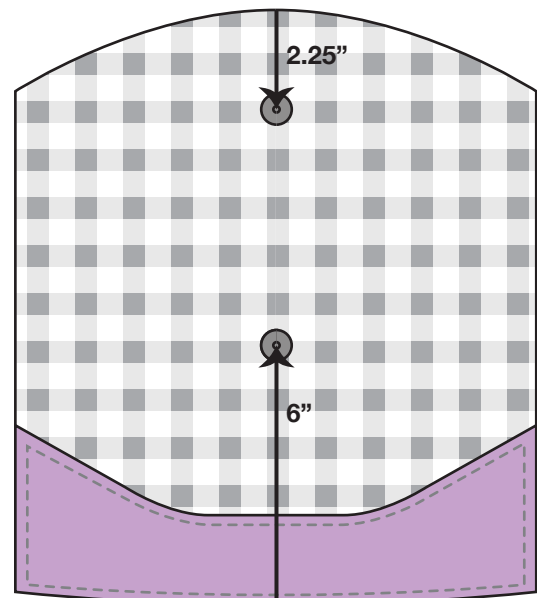
Carefully remove the machine basting over the zipper with a seam ripper, leaving the 1/2" ends stitched. If you used a longer zipper, slide the zipper pull into the opening.



Flip both **Pocket Panels** down against **Back Panel B** and press well, especially at the zipper. Trim the bottom edge of both **Pocket Panels** to match the bottom edge of the **Back Panel**. Pin the **Pocket Panels** in place along the raw edges. With the **Back Panel** right side up, machine baste along the side and bottom edges at 1/4" seam allowance.

4) MAGNETIC SNAPS

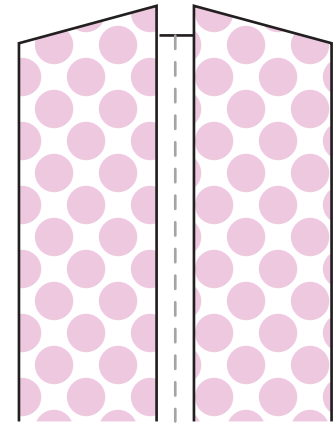
Use the *Front Panel paper pattern piece* or measure to mark the two magnetic snap placements on the right side of the exterior **Front Panel**. The center of the male part of the snap should be 2.25" down from the top edge (*2" for Small Wristlet*) and centered. The center of the female part of the snap should be 6" up from the bottom edge (*5" for Small Wristlet*) and centered. Install the snaps centered over the marks, then cover the prongs on the back with a scrap of woven interfacing.



5) WRISTLET STRAP *(optional; skip if making Large Clutch)*

Fold the **Wristlet Strap** in half, wrong sides together and matching the long edges and press to make a center crease. Open and fold each long edge to the center crease, so that the long raw edges are butting up against each other at the center and press.

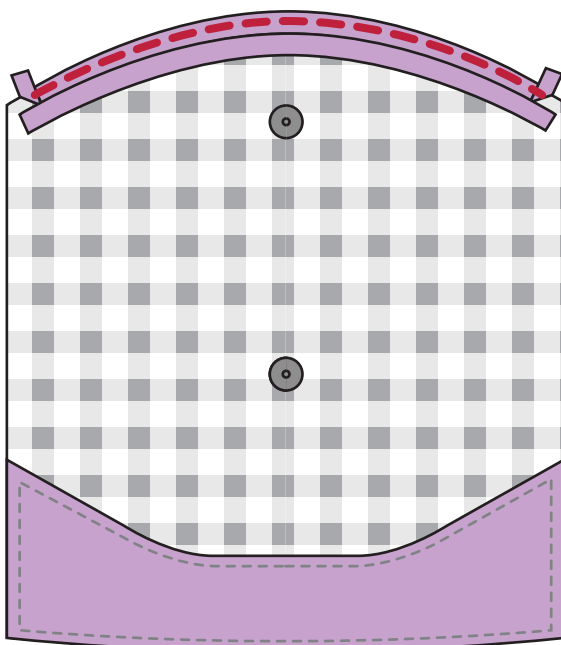
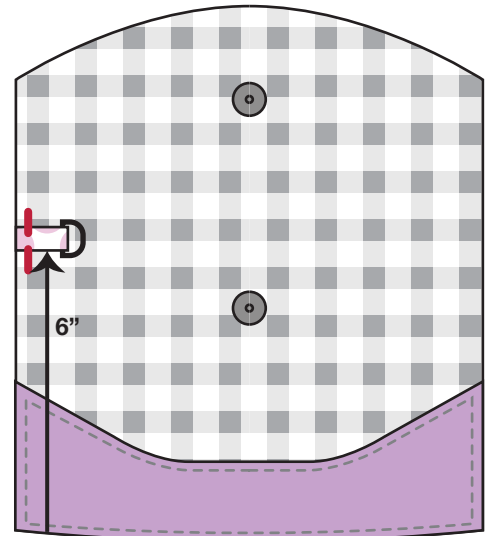
Fold in half again, matching the two folded long edges and press again. Now the two long raw edges should be hidden within the **Strap** and the **Strap** should be 1/2" wide. Top stitch along each long edge of the **Strap**, about 1/8" from the edge.



Cut a 2" length from one end of the **Strap**. This is the **Connector**. Set the 14" **Wristlet Strap** aside for now.

Slide a 1/2" D-ring onto the **Connector** and fold in half, matching the raw ends. Sew across the **Connector**, 1/4" from the raw ends, to secure the hardware.

Use the *Front Panel paper pattern piece* or measure to mark the **Wristlet Strap Placement** onto the right side of the **exterior Front Panel**. It should be 6" from the bottom corner, with the raw edges of the **Connector** matching the raw left edge of the **Front Panel**. Machine baste in place along the matched edges only at 1/4" seam allowance.



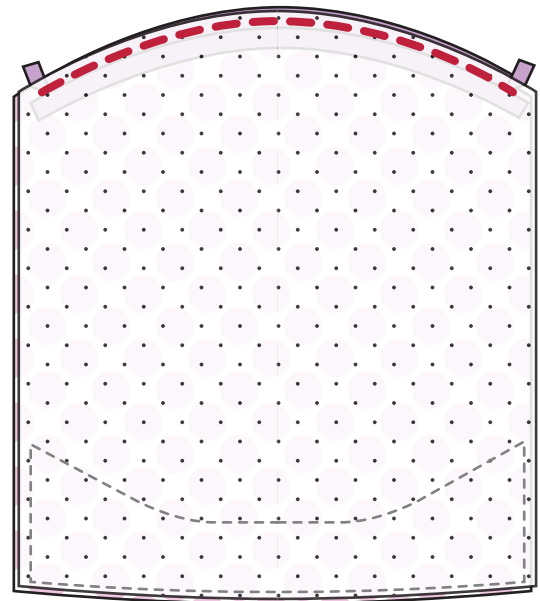
6) MAIN ZIPPER

Glue baste or pin a zipper, face down, to the right side of the **exterior Front Panel**, matching the edge of the zipper to the top curved edge of the panel. The zipper should be closed and the zipper pull should be to the left. The zipper stop at each end of the zipper should be about 3/4" from each top corner. Fold the end of the zipper tape just past the teeth over itself at a 90 degree angle so it trails off the edge of the panel. Using a zipper foot, sew along the top edge at 1/4" seam allowance.

If your zipper is wider than 1", pin so that it extends past the edge of the Front Panel by about 1/8".

Pin a **Lining Panel** to the **exterior Front Panel**, right sides together and matching all raw edges. The zipper will be sandwiched in between. Flip so the wrong side of the **exterior Front Panel** is up. Starting **exactly 1/2" from the side edge**, sew at 1/4" seam allowance, following the existing stitching. Stop and back stitch when you are **exactly 1/2"** from the other side edge.

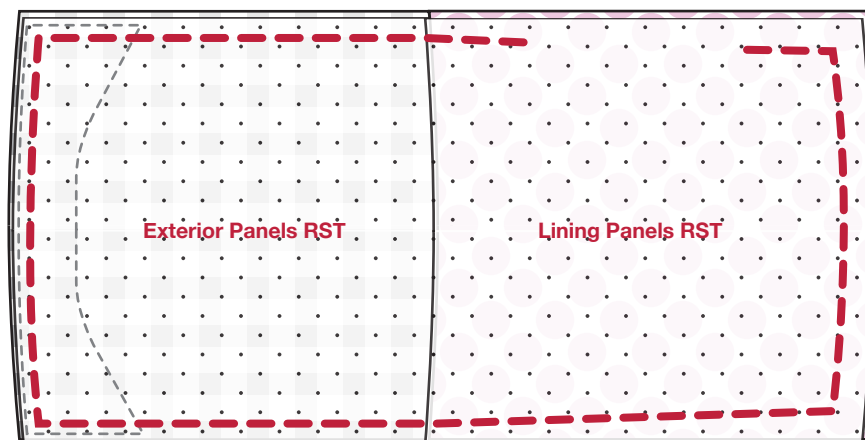
Press both panels away from the zipper. Repeat this step to sew the **exterior Back Panel** and **Lining Panel** to the other long edge of the zipper. Trim the ends of the zipper extending past the seam allowances.



7) ASSEMBLY

First, open the main zipper the entire way.

Pin the **exterior Front Panel** to the **Back Panel**, right sides together and matching all raw edges. Pin the two **Lining Panels** right sides together, matching all raw edges. Sew around all matched edges of the **exterior panels** at 1/2" seam allowance. When you get to the lining, continue sewing, but slowly increase to a 3/4" seam allowance. Leave a 5" opening along one side edge of the **Lining Panels**.

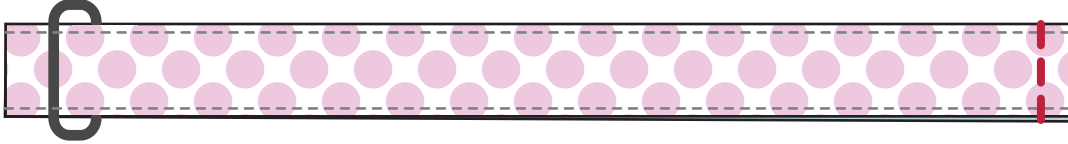


Trim the seam allowances down to about 1/4", only along the stitching. Turn the bag right side out through the opening in the lining. Tuck the raw edges inside the opening 3/4" and press. Pin the opening closed, then top stitch right along the edge to close.

Turn the bag **lining side out** with the exterior tucked inside. Press the bag well, especially along the zipper. Make sure the zipper is completely open. You will be sewing inside the bag, with the presser foot against the exterior. Start at the side seam at the closed end of the zipper and top stitch along the zipper, about 1/8" from the zipper seam. Pivot with needle down when you reach the other side seam and continue until you end where you began. Back stitch.

8) FINISH WRISTLET STRAP *(optional; skip if making Large Clutch)*

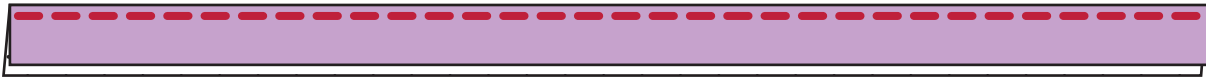
Slide a swivel clip onto the **Wristlet Strap** and match the raw ends together so that the swivel clip is hanging inside the strap, rather than outside. Sew along the raw ends about 1/4" from the raw edge.



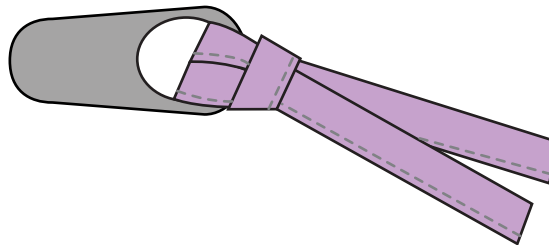
Flip the strap inside out so that the swivel clip is now on the outside of the strap and the seam allowance is on the inside. Slide the swivel clip to the seam and sew across the strap as closely to the clip as you can to secure it in place. Clip onto the D-ring!

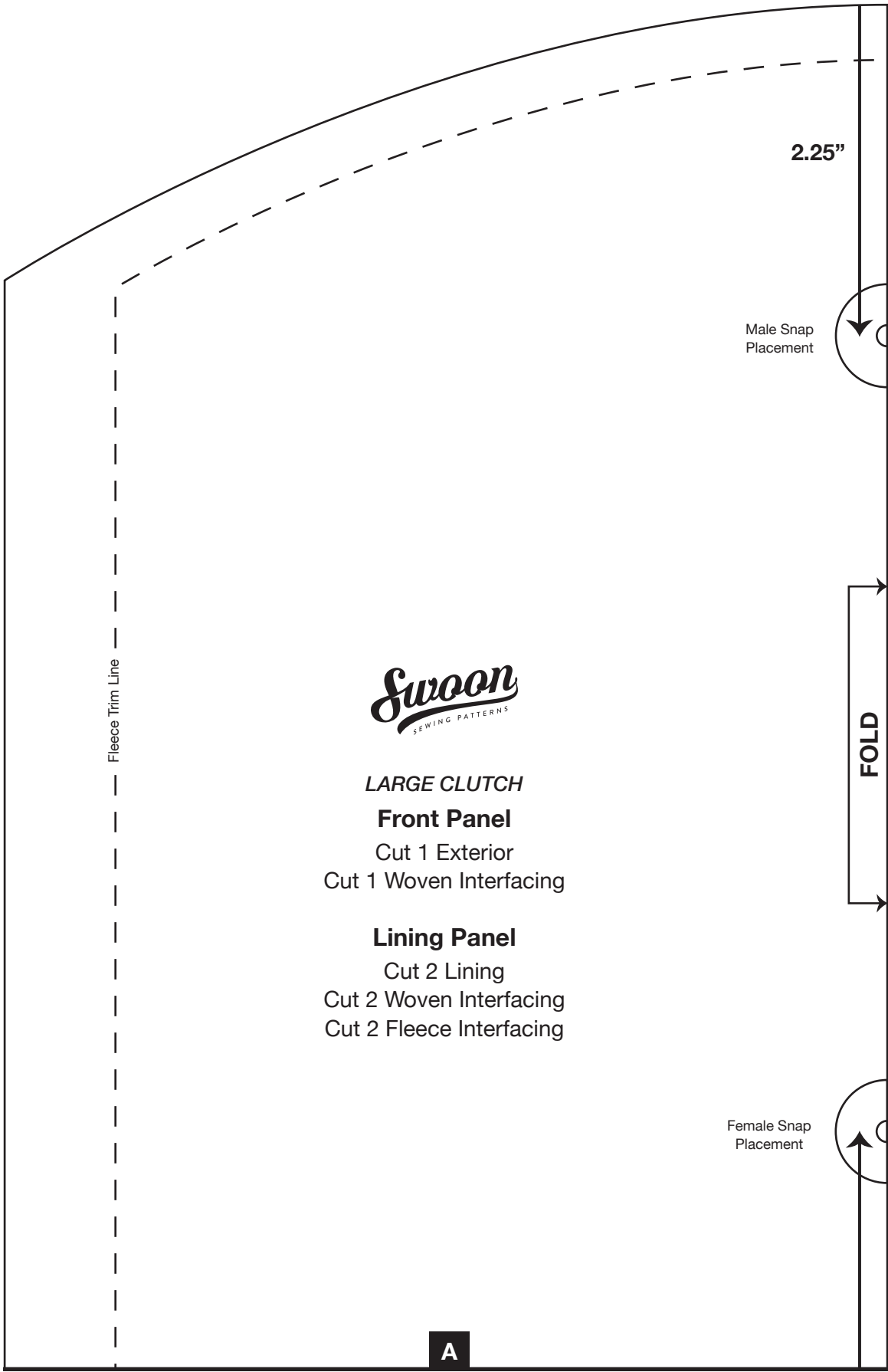
9) VINYL ZIPPER PULLS *(optional)*

Fold the **Zipper Pulls** panel in half, wrong sides together and matching the two long edges. Top stitch along the long fold, about 1/8" from the fold.



Trim the long raw edges, very closely to the stitching. Then, cut in half, so you end up with two 6" lengths. Fold one 6" length in half. Poke the fold through the hole in the main zipper pull, then pull the "tails" through the loop of the fold. Repeat to attach the other **Zipper Pull** to the pocket zipper on the back of the bag.





LARGE CLUTCH

Front Panel

- Cut 1 Exterior
- Cut 1 Woven Interfacing

Lining Panel

- Cut 2 Lining
- Cut 2 Woven Interfacing
- Cut 2 Fleece Interfacing

Fleece Trim Line

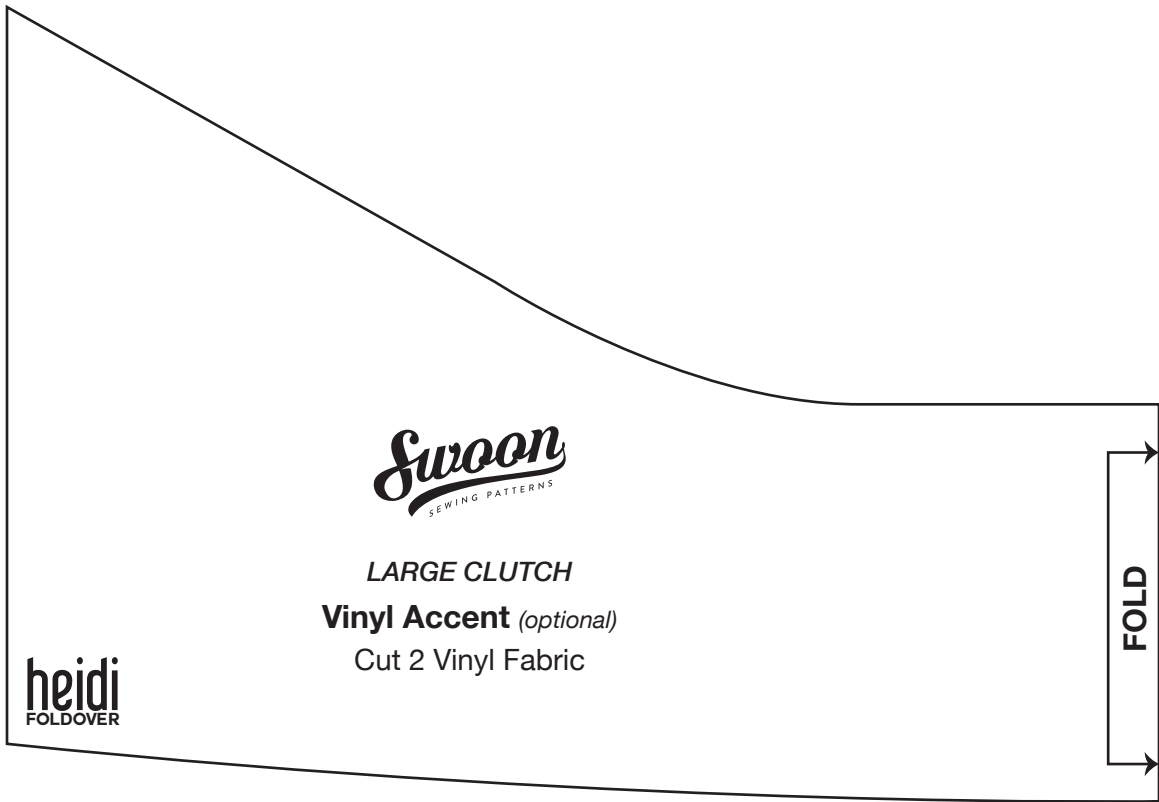
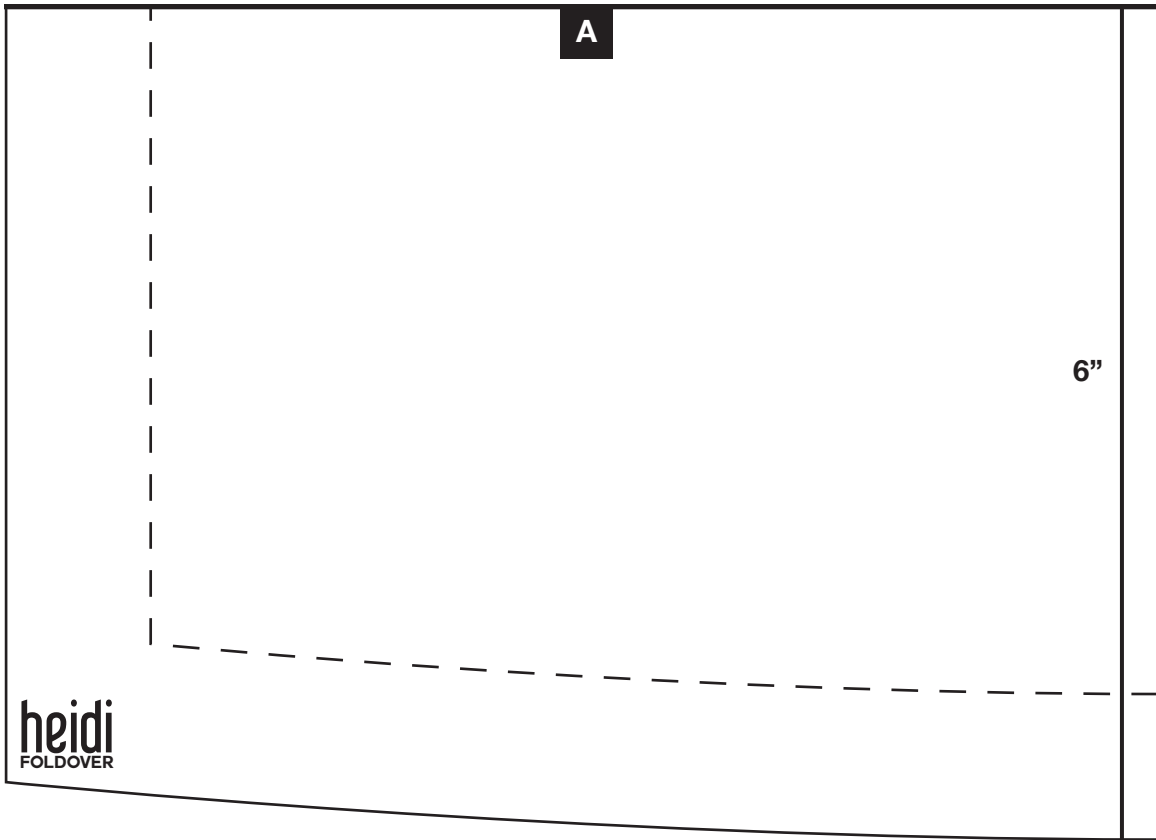
2.25"

Male Snap Placement

FOLD

Female Snap Placement

A





2"

This is a test square to ensure the pattern printed at the correct size.



LARGE CLUTCH
Back Panel B
Cut 1 Exterior
Cut 1 Woven Interfacing





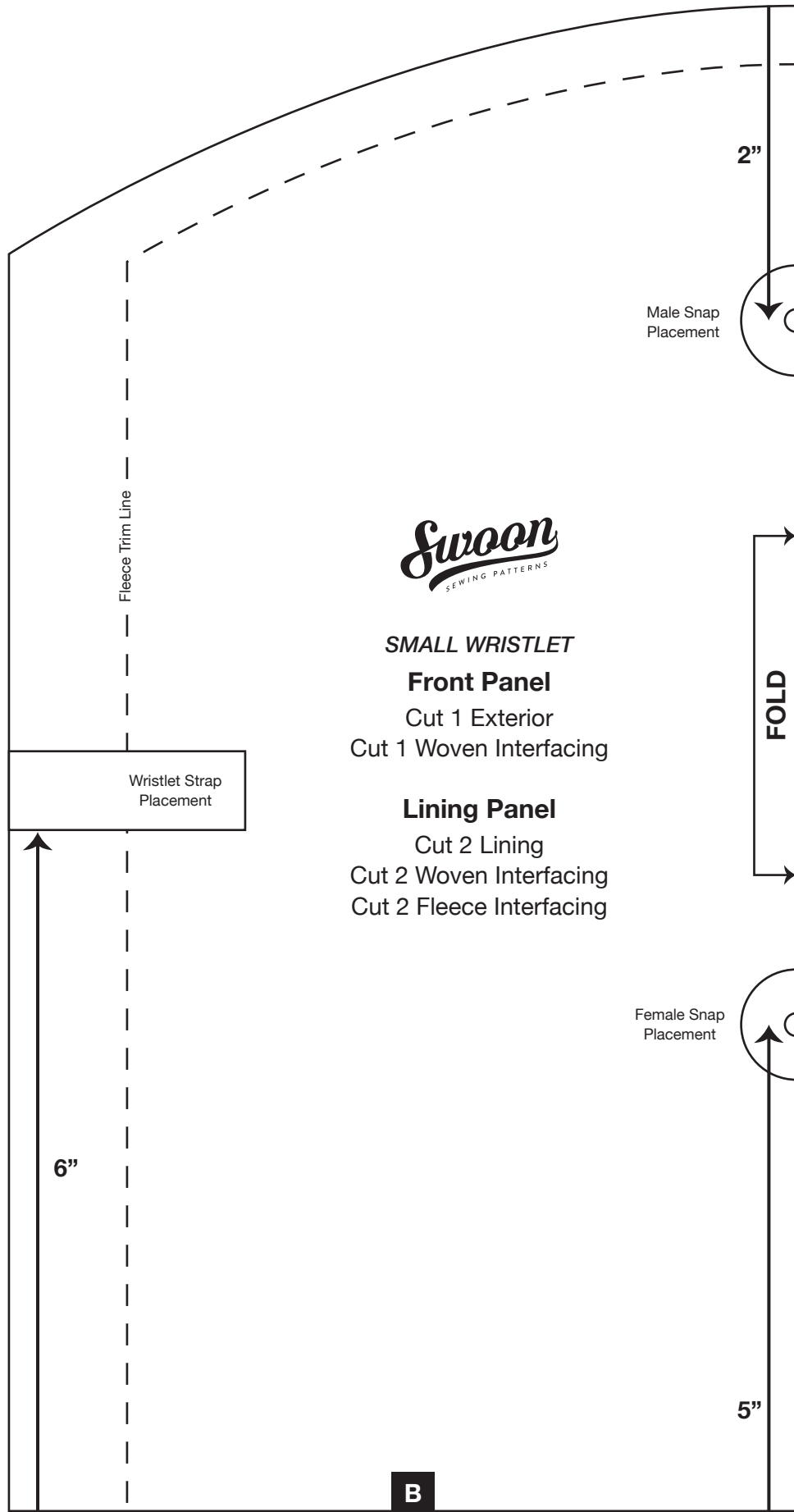
LARGE CLUTCH

Pocket Panel

Cut 2 Lining

Cut size: 12" x 9"





SMALL WRISTLET

Front Panel

- Cut 1 Exterior
- Cut 1 Woven Interfacing

Lining Panel

- Cut 2 Lining
- Cut 2 Woven Interfacing
- Cut 2 Fleece Interfacing

Fleece Trim Line

Wristlet Strap Placement

Male Snap Placement

FOLD

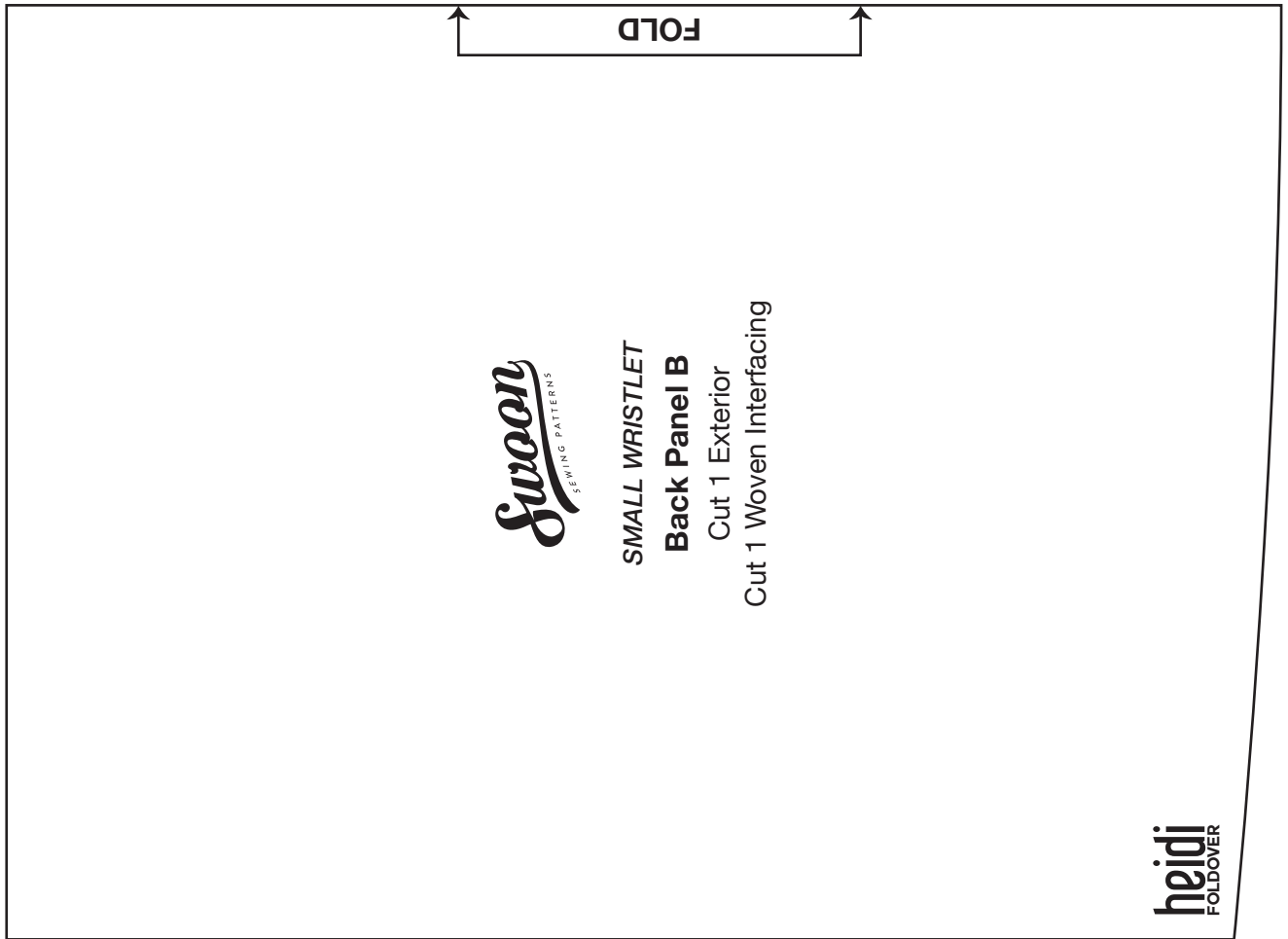
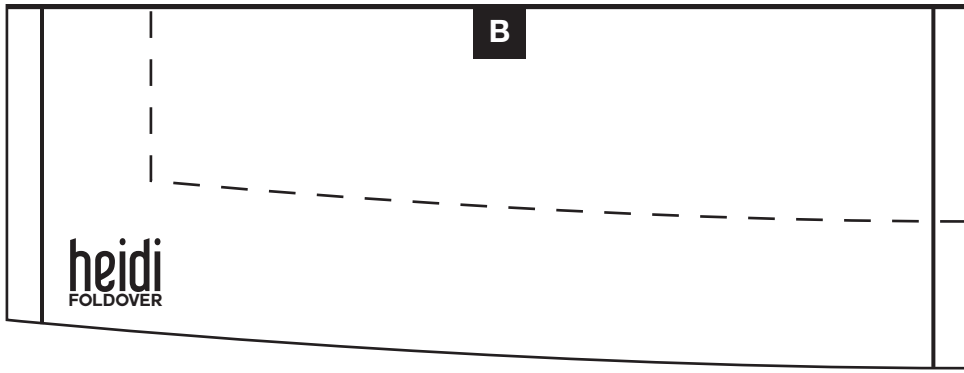
Female Snap Placement

B

2"

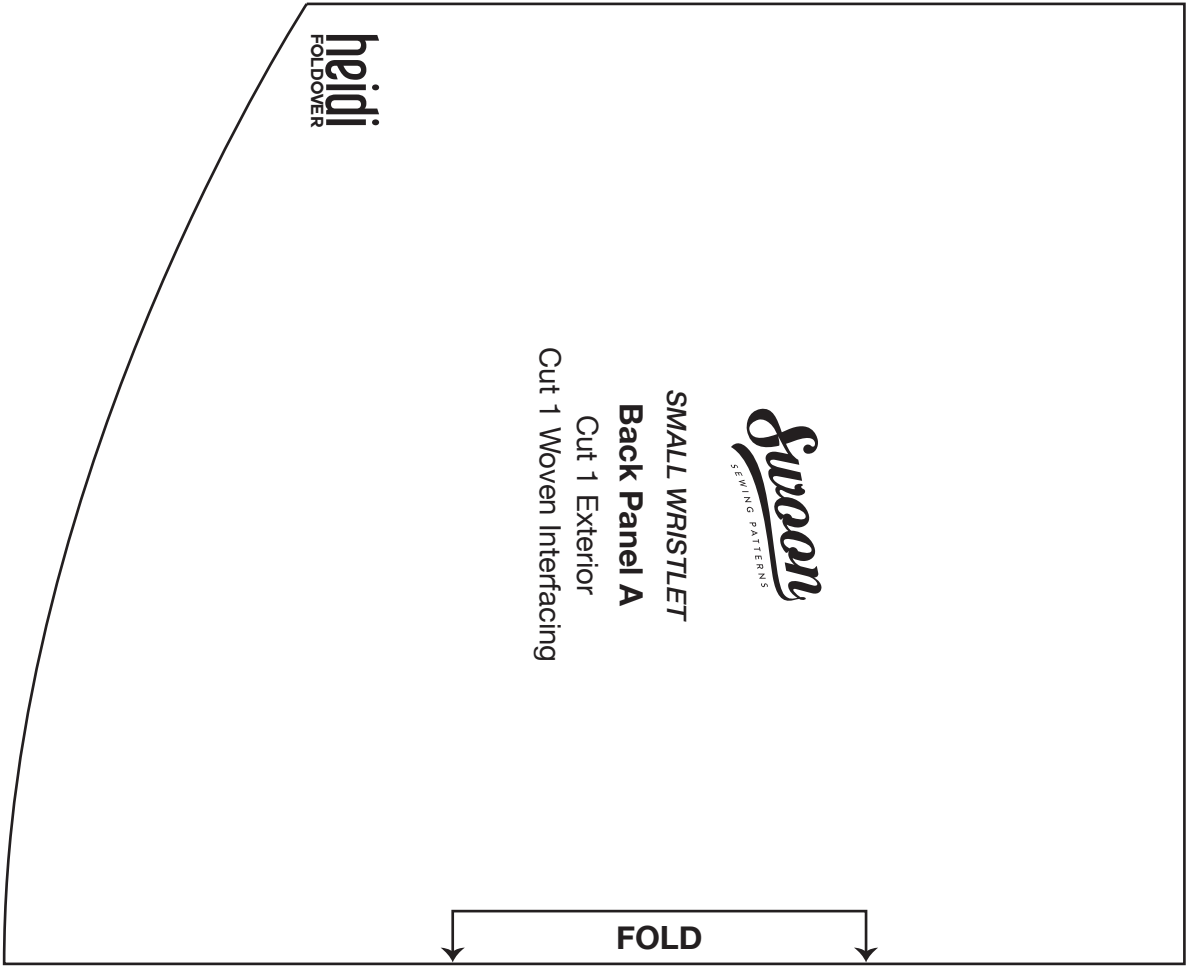
6"

5"



2"

This is a test square to ensure the pattern printed at the correct size.





SMALL WRISTLET

Pocket Panel

Cut 2 Lining

Cut size: 10" x 7.5"

