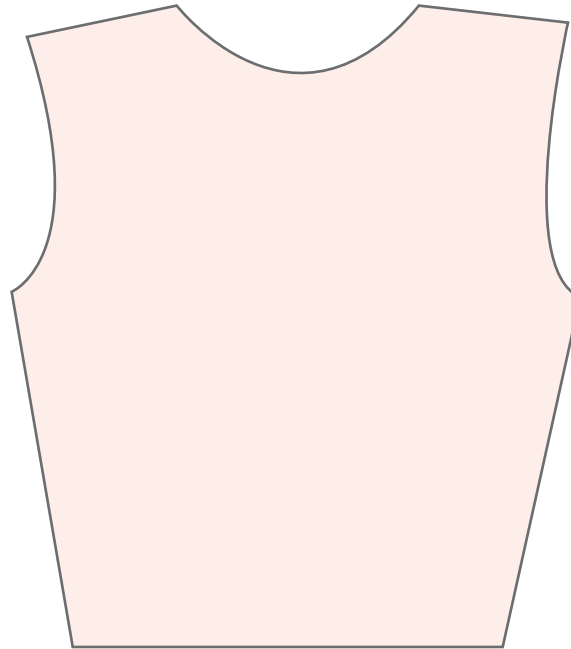


UPDATED

the littlest studio



Knit Bodice Pattern With Circle Skirt Pattern!

2nd Edition

Updated July 2016



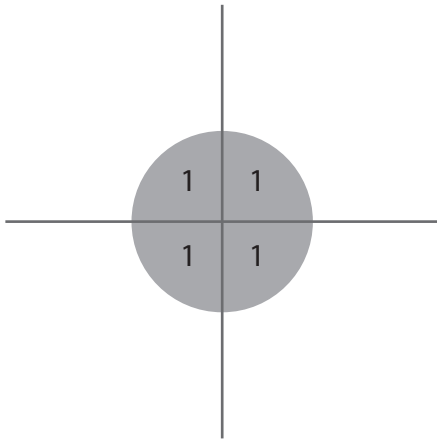
The Littlest Studio ©2015
www.thelittleststudio.com

The contents of this pattern
(including instructions, photos and illustrations)
are protected by copyright
and belong exclusively to The Littlest Studio.
This pattern is for domestic use only.
No part of this pattern
may be reproduced or resold without express permission.



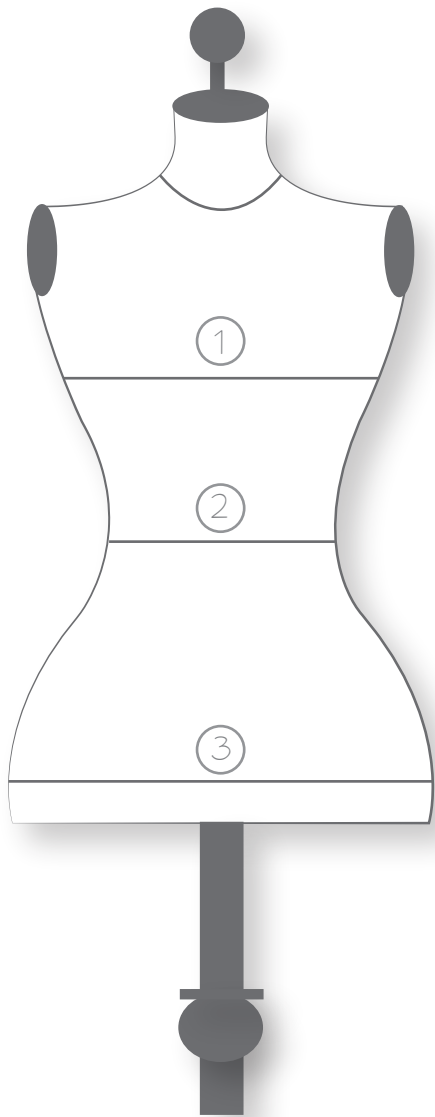
Printing

When printing your pattern, make sure that your printer is set to print the “actual size” rather than have it “fit to page”. This will ensure correct sizing. Print off the first page of the pattern and measure the 2”x2” square to double check your printing.



Assembling

After printing all your pattern pieces, match up the numbered circles to assemble your pattern. You will have to trim the paper to the border on some sides to properly tape your pieces into place.



Measure

1. Bust

Measure around the fullest part of your bust.

2. Waist

Measure around the narrowest part of your waist

3. Measure around the fullest part of your hips.

Size Chart

Size	Bust	Waist	Hip
6	33	25	35
8	35	27	37
10	37	29	39
12	39	31	41
14	41	33	43
16	43	35	45
18	45	37	47
20	47	39	49
22	49	41	51

Recommended Fabrics:

Medium Weight Knit such as, Double Faced Knits
and Ponte De Roma

There is a 1/4" seam allowance built into the pattern.

Supplies

-2 Meters of Medium Weight Knit Fabric,
Double knit or Ponte works best (60" Width)

-Thread

-1.5 Meters of 1/4" Elastic

-Printer

-Printer Paper

-Scotch Tape

Recources:

Blog Post about Pattern:

<http://www.thelittleststudio.com/1/post/2016/01/free-pattern-with-dress-tutorial.html>

Link to Fabric:

<https://www.fabric.com/buy/0266952/telio-ponte-de-roma-knit-solid-navy>

Circle Skirt Tutorial:<http://www.thelittleststudio.com/1/post/2015/05/circle-skirt-tutorial.html>

Cutting and Sewing Instructions

See also <http://www.thelittleststudio.com/1/post/2016/01/free-pattern-with-dress-tutorial.html>

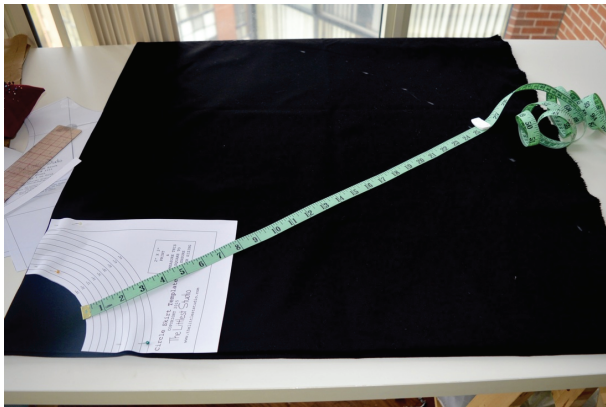


For the bodice of this dress
you will need to cut the following pieces

1 Front Piece cut on Fold

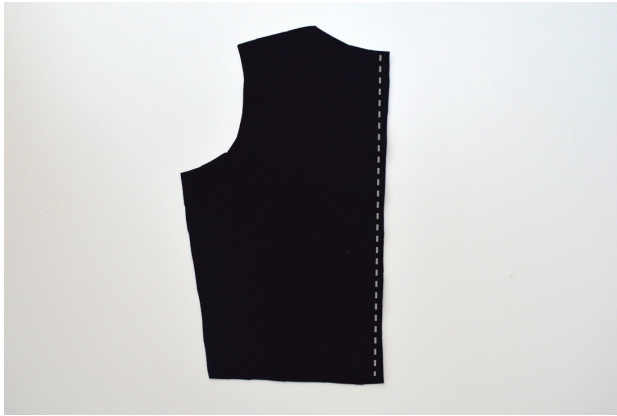
2 Back Pieces

1 Circle Skirt (See Below)



Fold your fabric in half width wise and then again in length wise. Cut out your waist size from the template and place it in the upper folded corner and pin in place. Measure from your waist line to your desired hem length and mark. Cut out along your marked hemline and your waist curve and unfold!

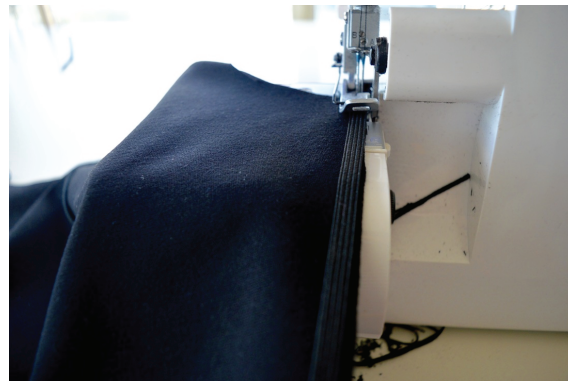
For more detailed circle skirt instructions please follow this link.

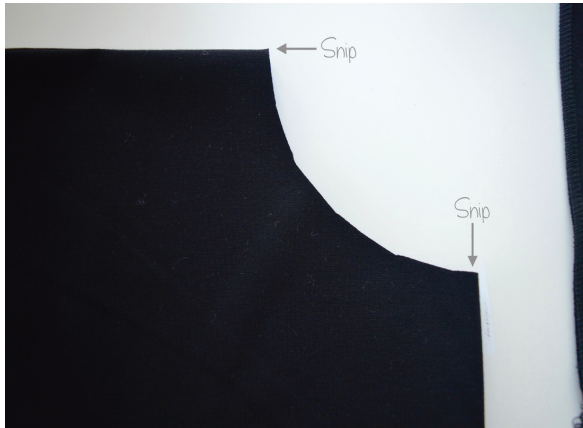


With your back pieces placed right sides together, sew down the center back seam. Press seam to one side.

Placing right sides together, sew your front piece to your back piece at side and shoulder seams.

Cut out four pieces of 1/4" elastic. Two the length of your shoulder seams and two the length of your side seams. Place each piece of elastic on its corresponding seam and sew in place. Do not stretch the elastic as you sew, you want it to lie flat against the seam.





While your circle skirt is still folded up make a snips at the front/back of your skirt (it will be the side that was parallel with your selvage) and another snip at the side.

Match up the notches on your skirt with the center front, center back and side seams of the bodice piece.

Pin and sew around the waist attaching the bodice to your skirt.

Cut a piece of 1/4" elastic the same measurement as your waist + 1". Pin the elastic around your waist seam overlapping the edges.

You don't want to stretch the elastic, you just want it to lie nice and flat.

Stitch is place.

This will help hold up the heaviness of the skirt.

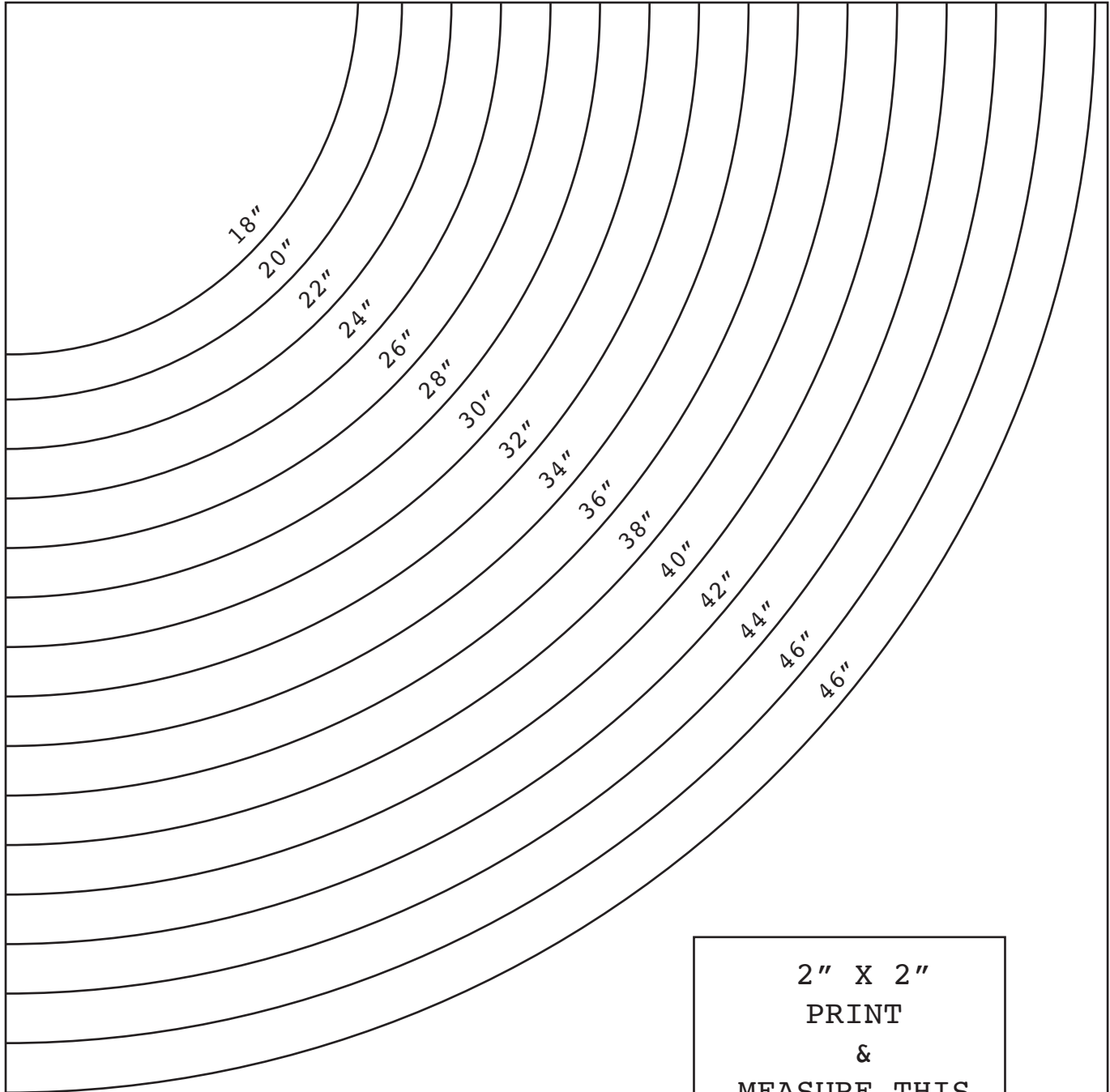




Overlock around the armholes and neckline and hem.
Press to shrink back anything that might have stretched out. Turn
under all raw edges
(Neckline, armholes and hem) a 1/4" and stitch
using a narrow zig zag stitch. .



Cut along the line that corresponds with your waist measurement



Circle Skirt Template

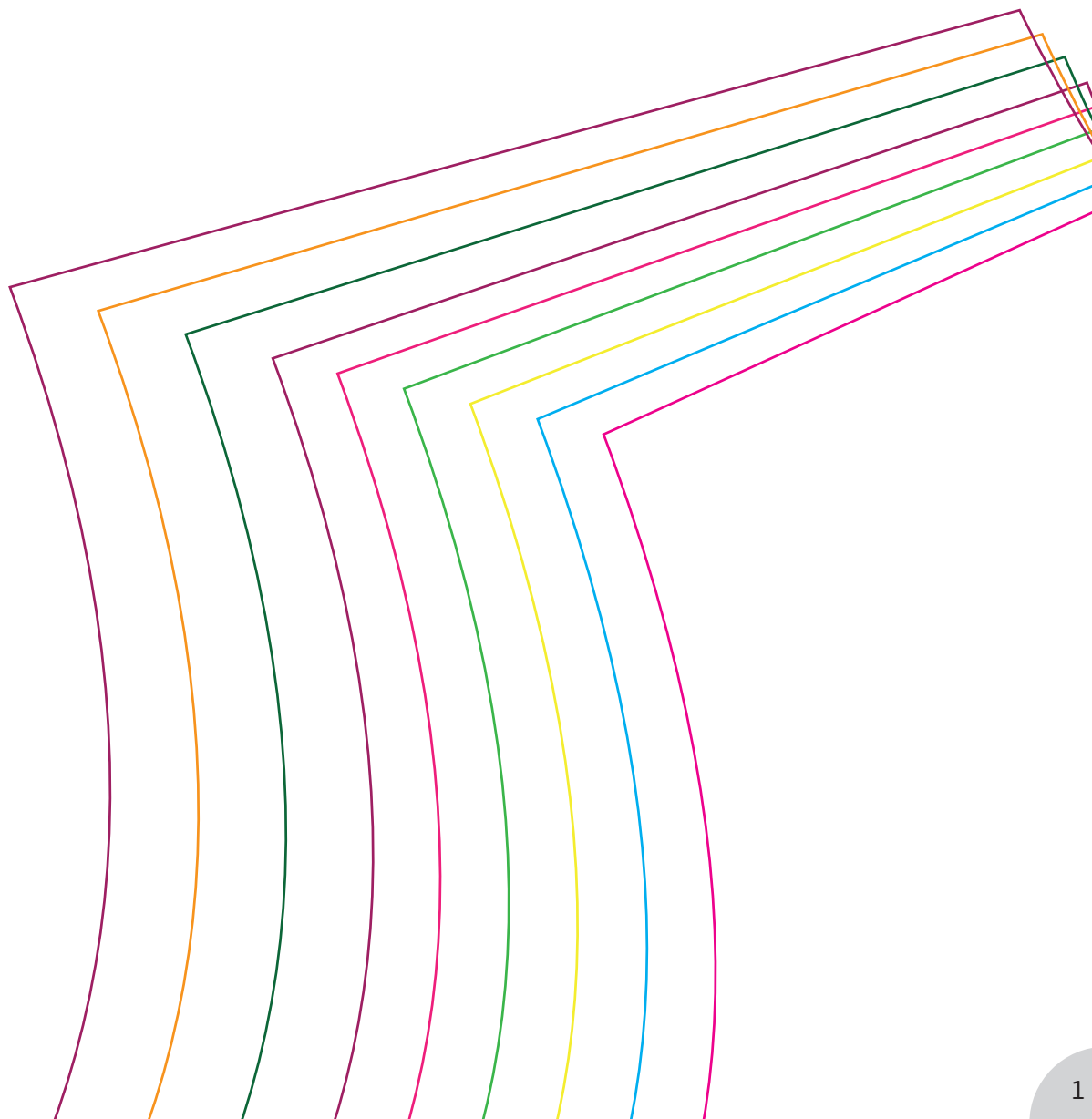
COPYRIGHT 2015

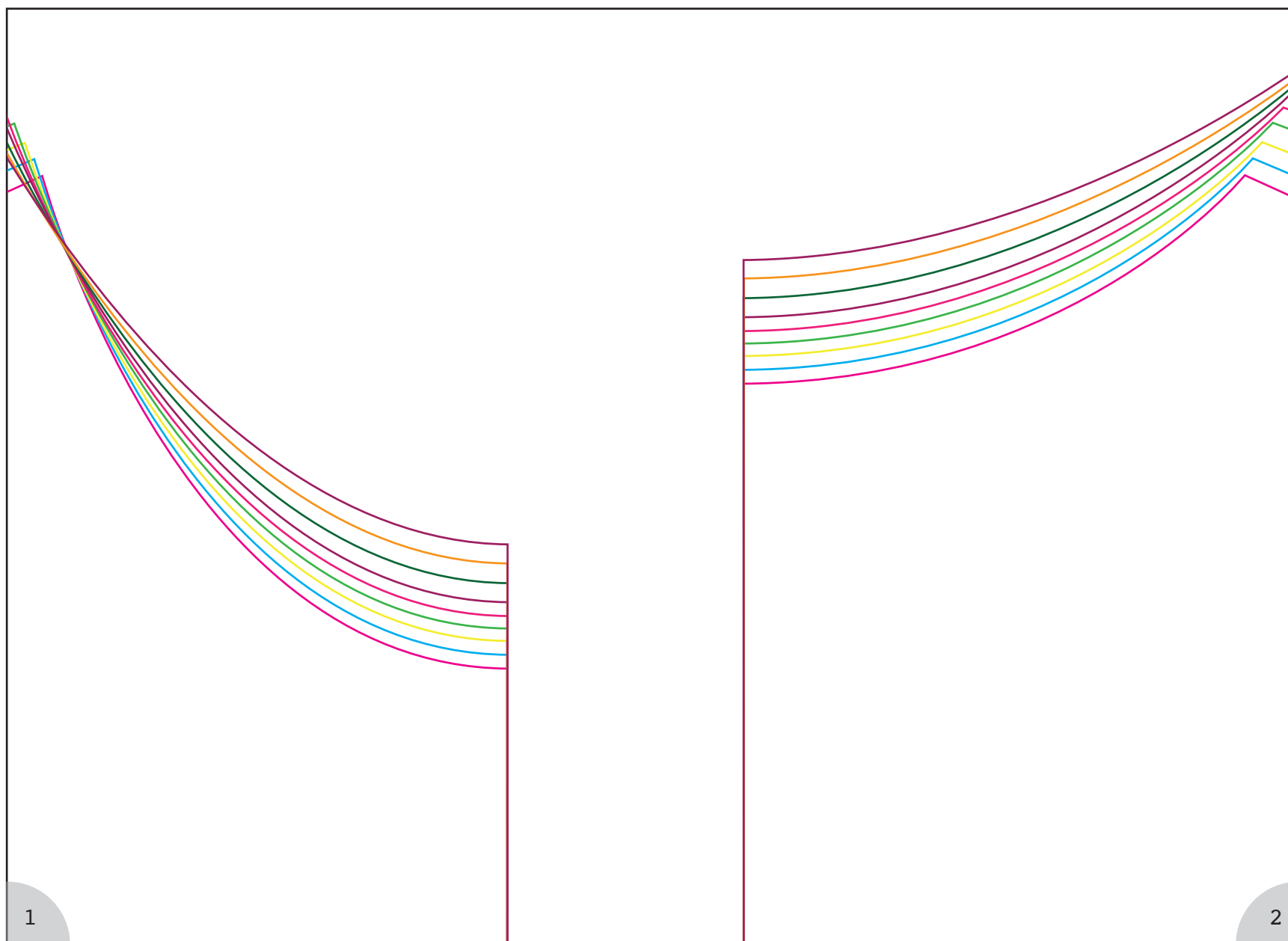
The Littlest Studio

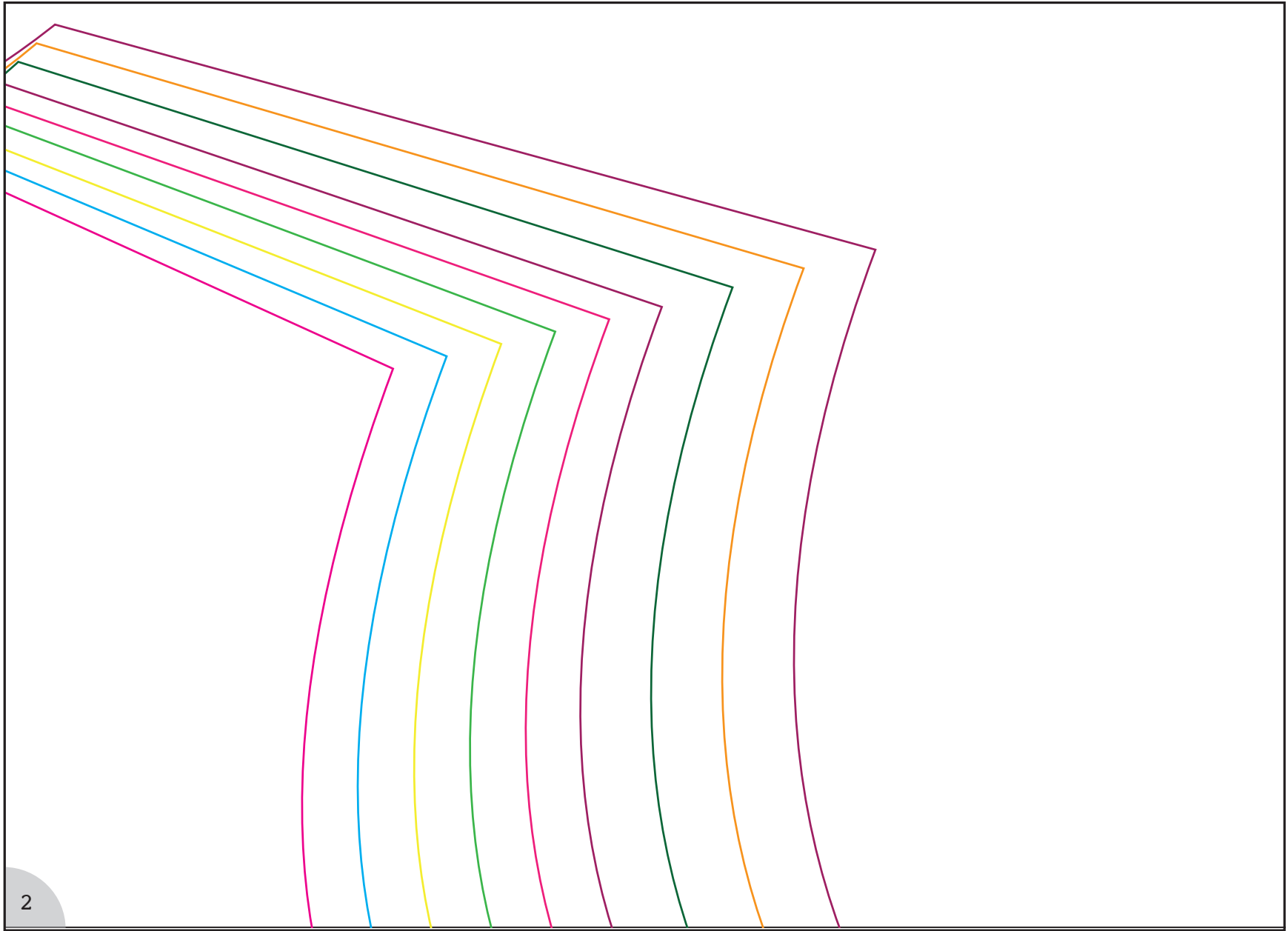
www.thelittleststudio.com

2" X 2"
PRINT
&
MEASURE THIS
SQUARE TO
ENSURE
PROPER SIZING

2" x 2"
Square
Print and
Measure
this Square
to
Ensure Proper
Sizing







The Littlest Studio

Knit Bodice Block

Style # 3101

Front

CUT 1 on Fold

The Littlest Studio © 2015
www.thelittleststudio.com

The contents of this pattern
(including instructions, photos and illustrations)
are protected by copyright
and belong exclusively to The Littlest Studio.
This pattern is for domestic use only.
No part of this pattern
may be reproduced or resold.

1

2

The Littlest Studio

Knit Bodice Block

Style # 3101

Back

CUT 2

The Littlest Studio© 2015
www.thelittleststudio.com

The contents of this pattern
(including instructions, photos and illustrations)
are protected by copyright
and belong exclusively to The Littlest Studio.
This pattern is for domestic use only.

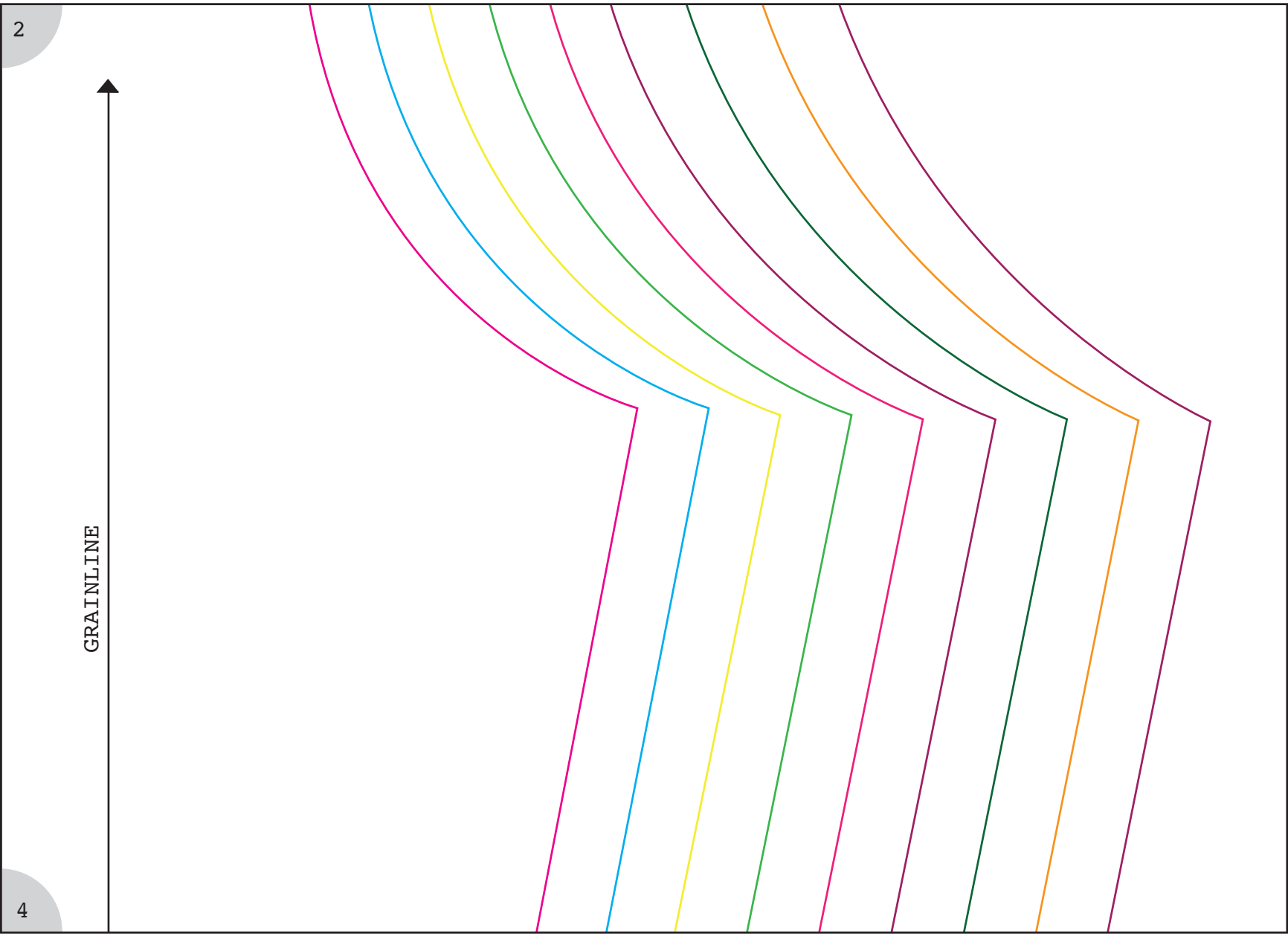
No part of this pattern
may be reproduced or resold.

GRAINLINE

Place on Fold

3

4



Size 22 Size 20 Size 18 Size 16 Size 14 Size 12 Size 10 Size 8 Size 6

