

- 1 Schnittmuster ohne Größenanpassung, d.h. in tatsächlicher Grösse, ausdrucken.

Grösse anhand des Kontrollquadrates auf Seite 4 kontrollieren.

Entlang der gestrichelten Linien zusammenkleben gemäss Legeplan auf Seite 2.

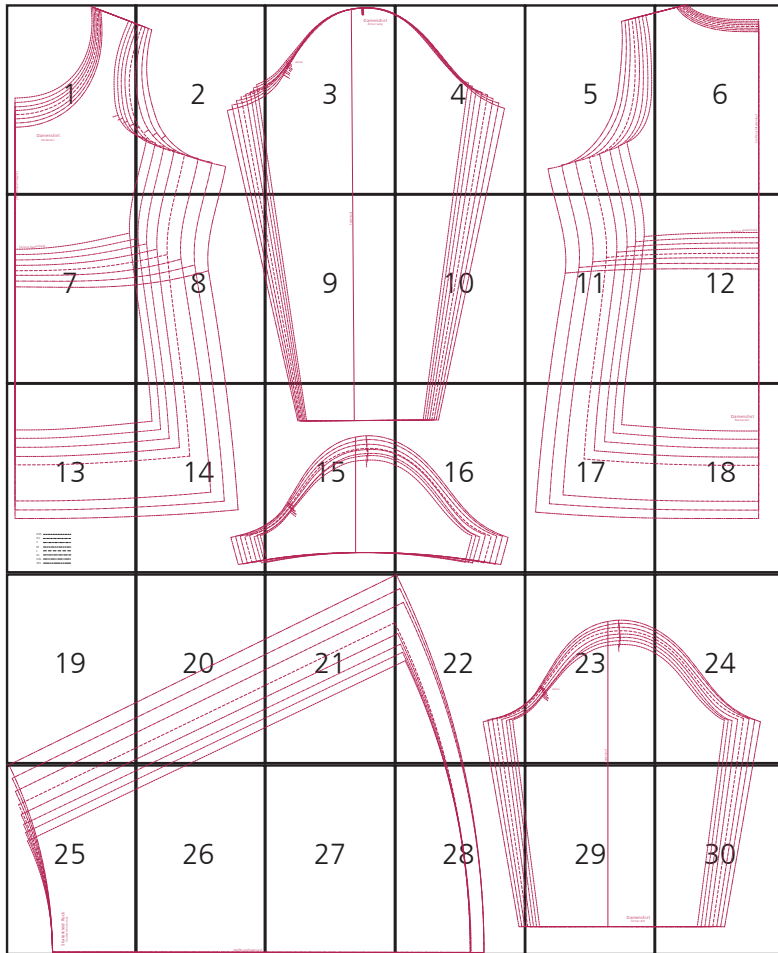
Dieses Schnittmuster stammt aus dem Buch
„Nähen mit JERSEY – KLIMPERGROSS“
112 Seiten, 22,2 x 23,5 cm, Hardcover
ISBN 978-3-7724-6492-8

© frechverlag

Damenshirt Vorderteil



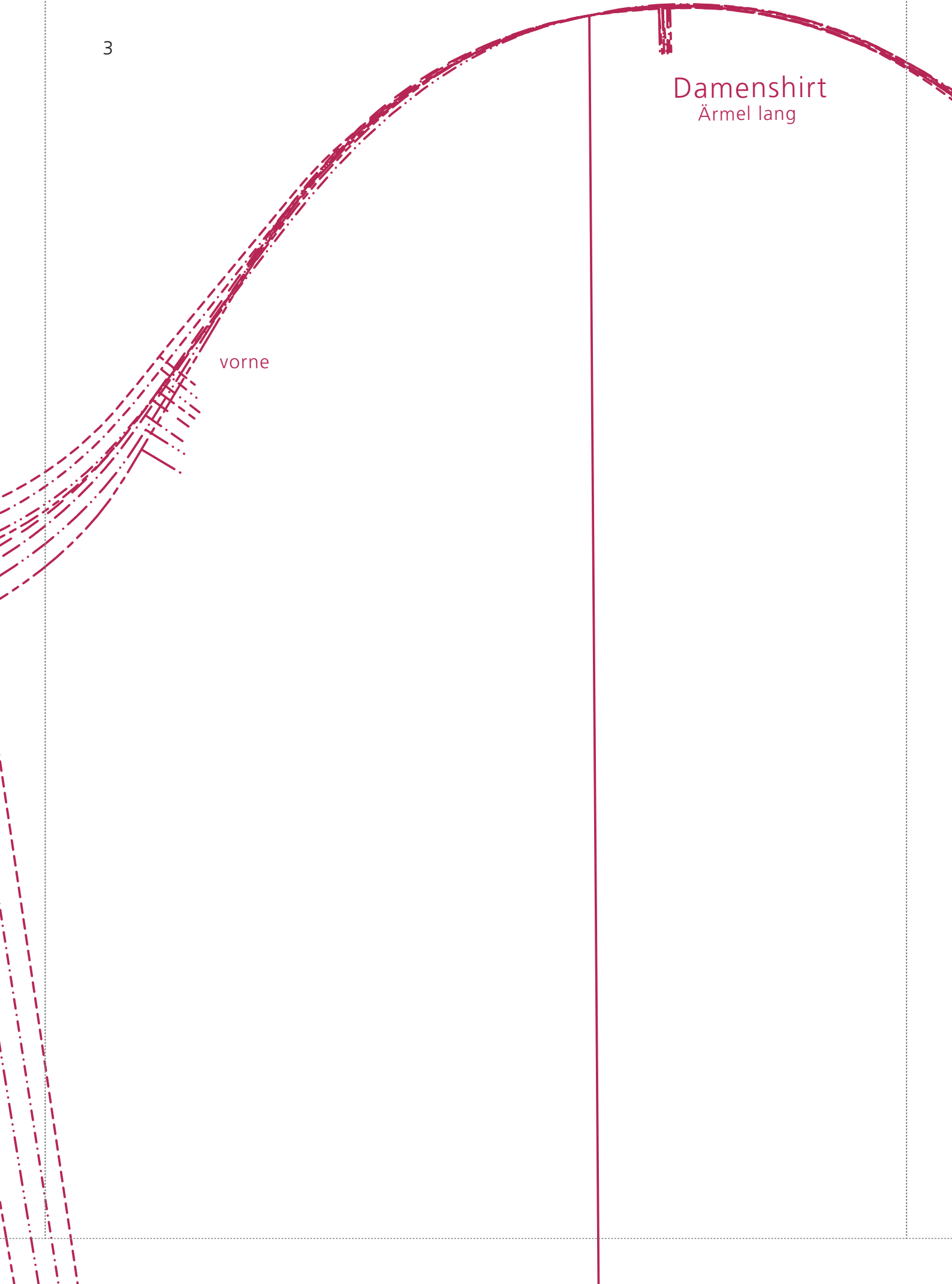
2



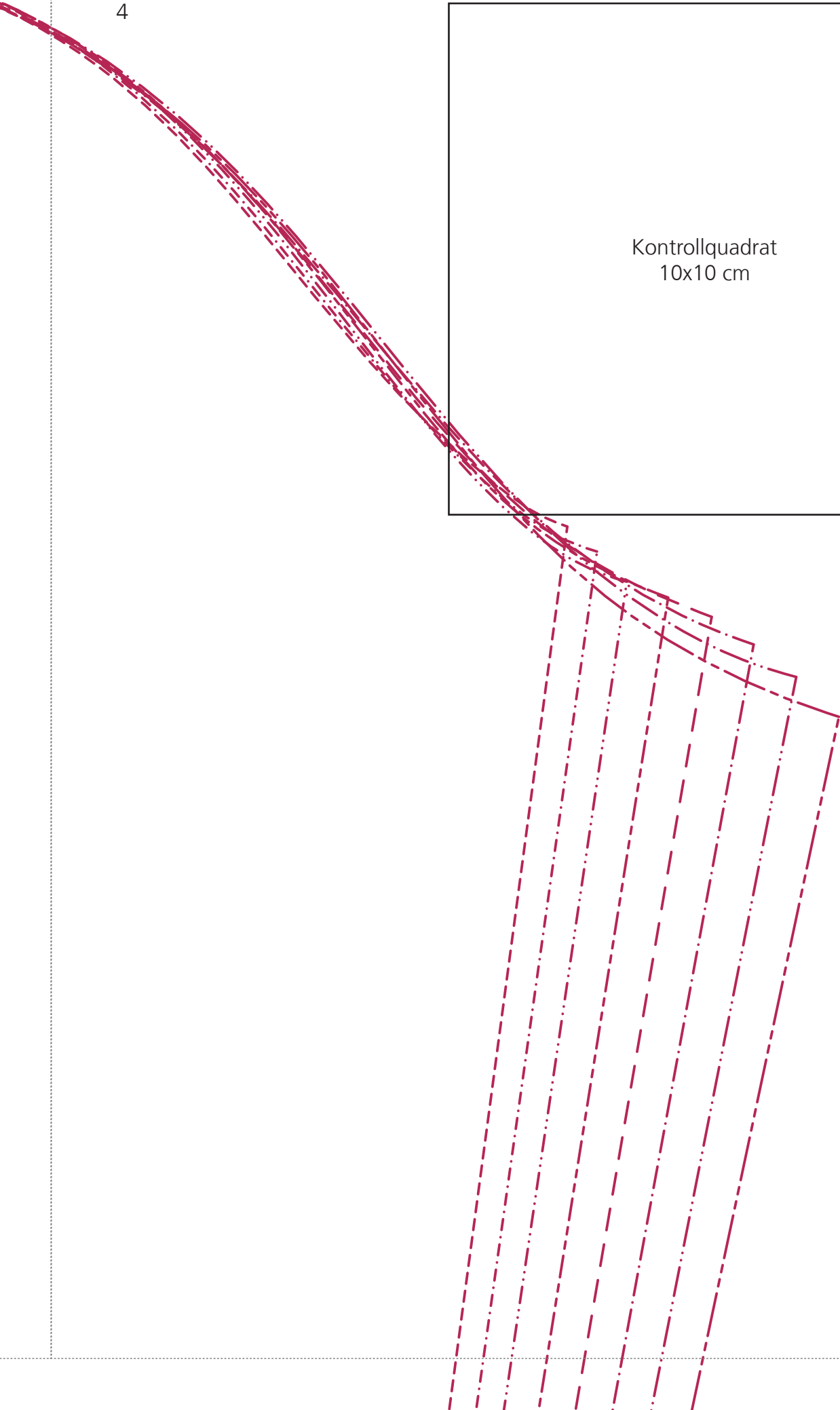
3

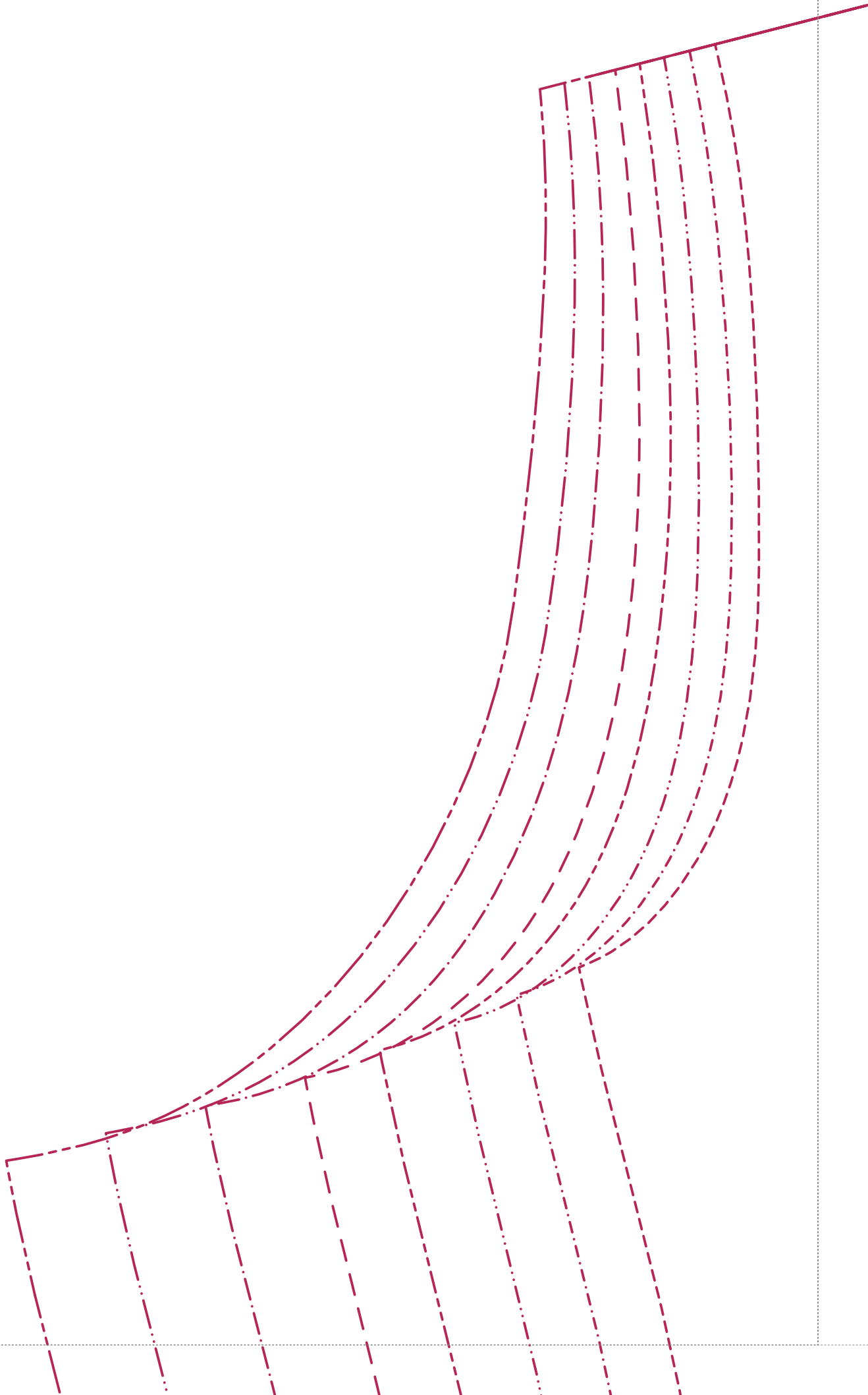
Damenshirt
Ärmel lang

vorne

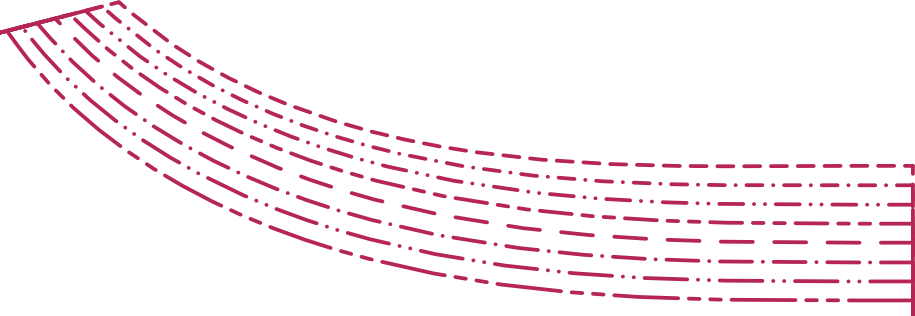


4



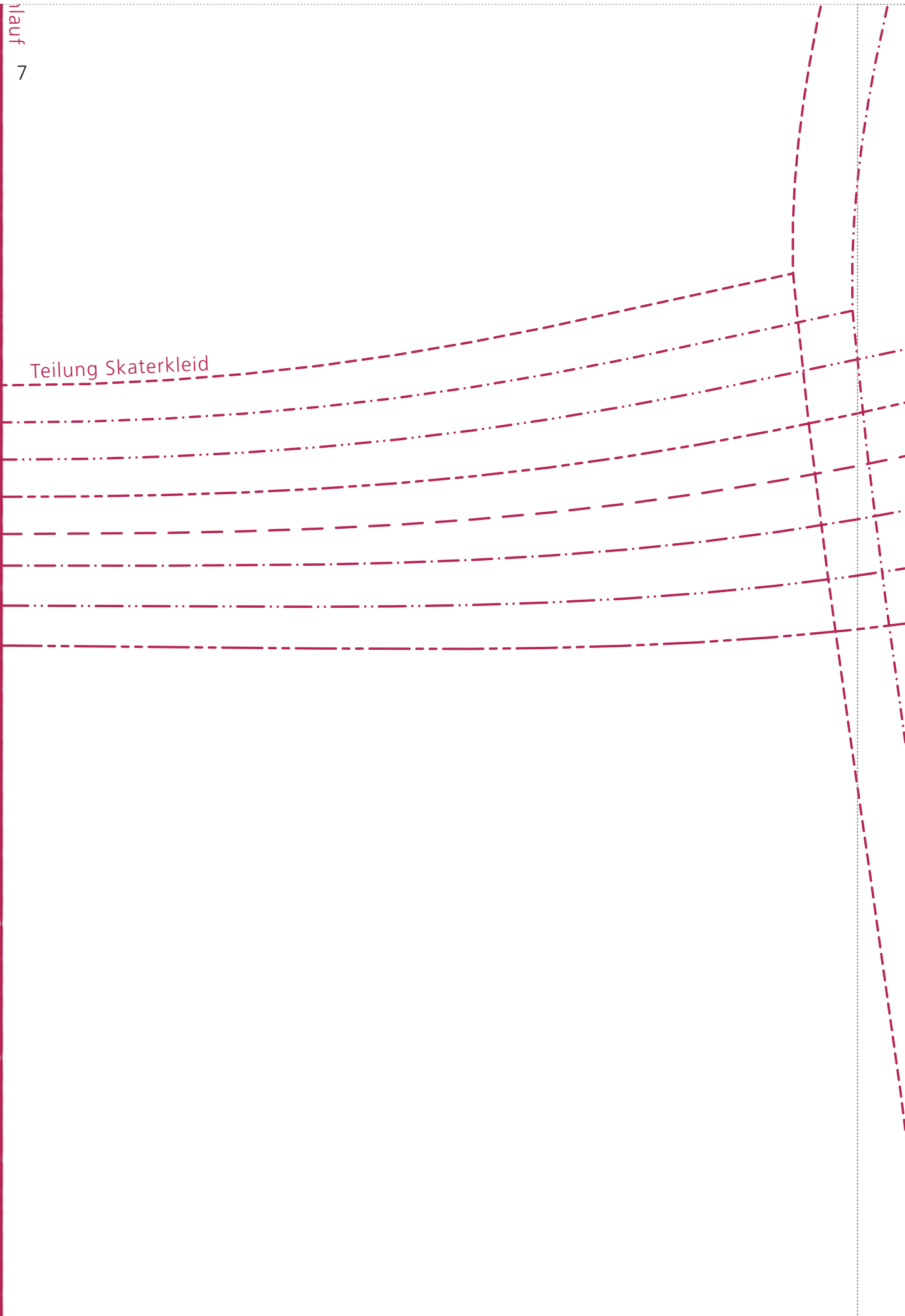


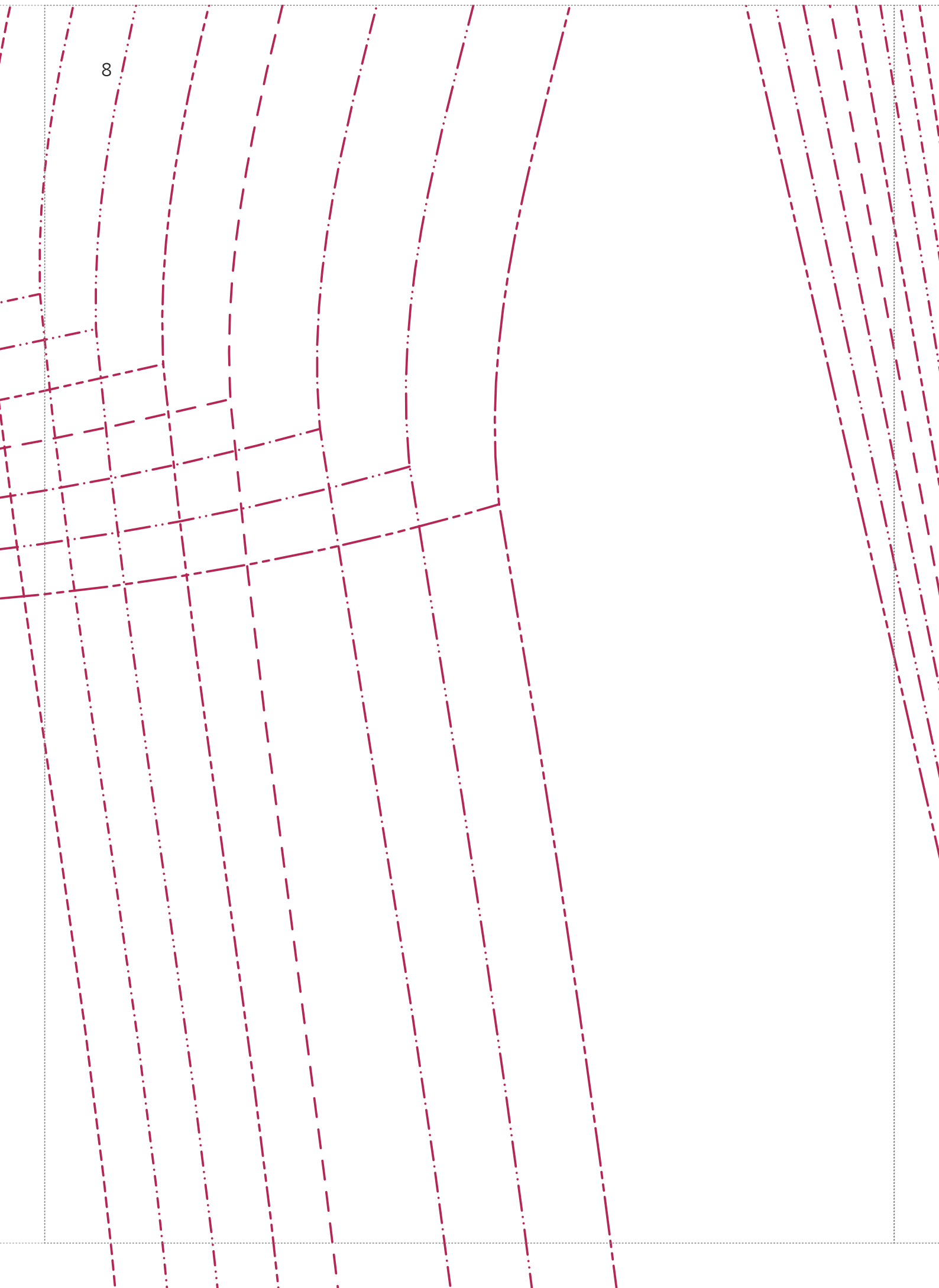
6

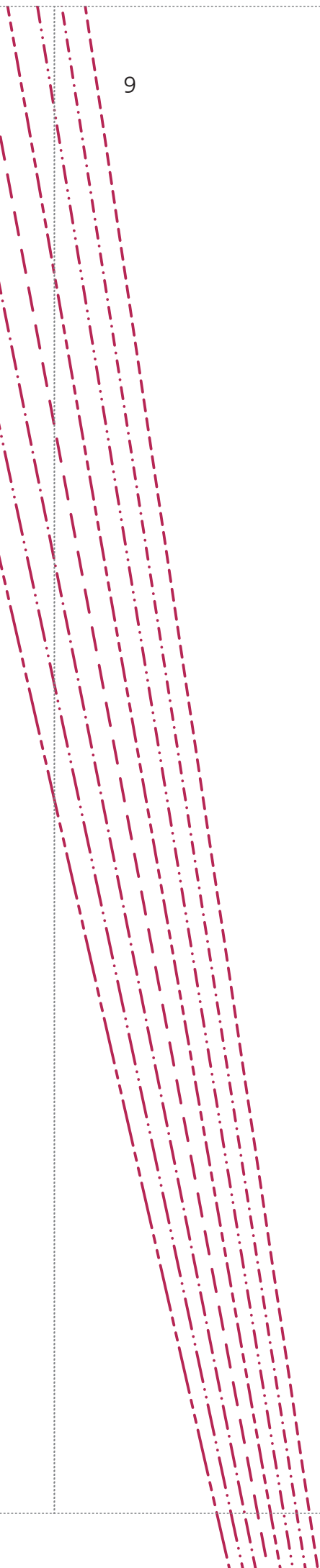


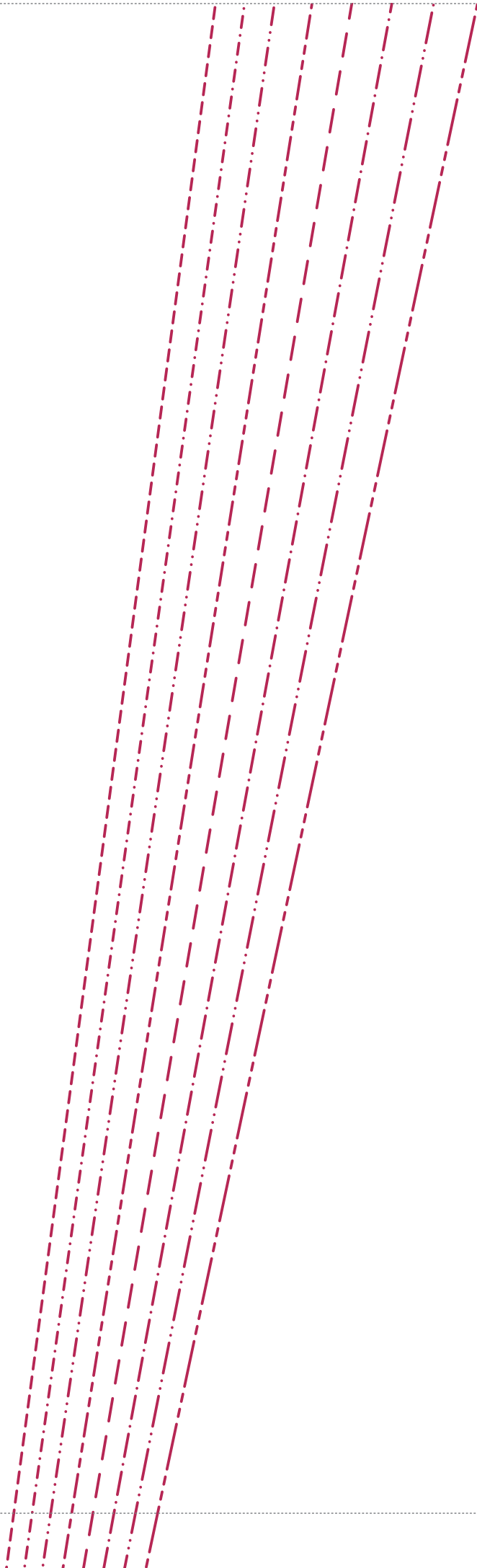
Stoffbruch/Fadenlauf

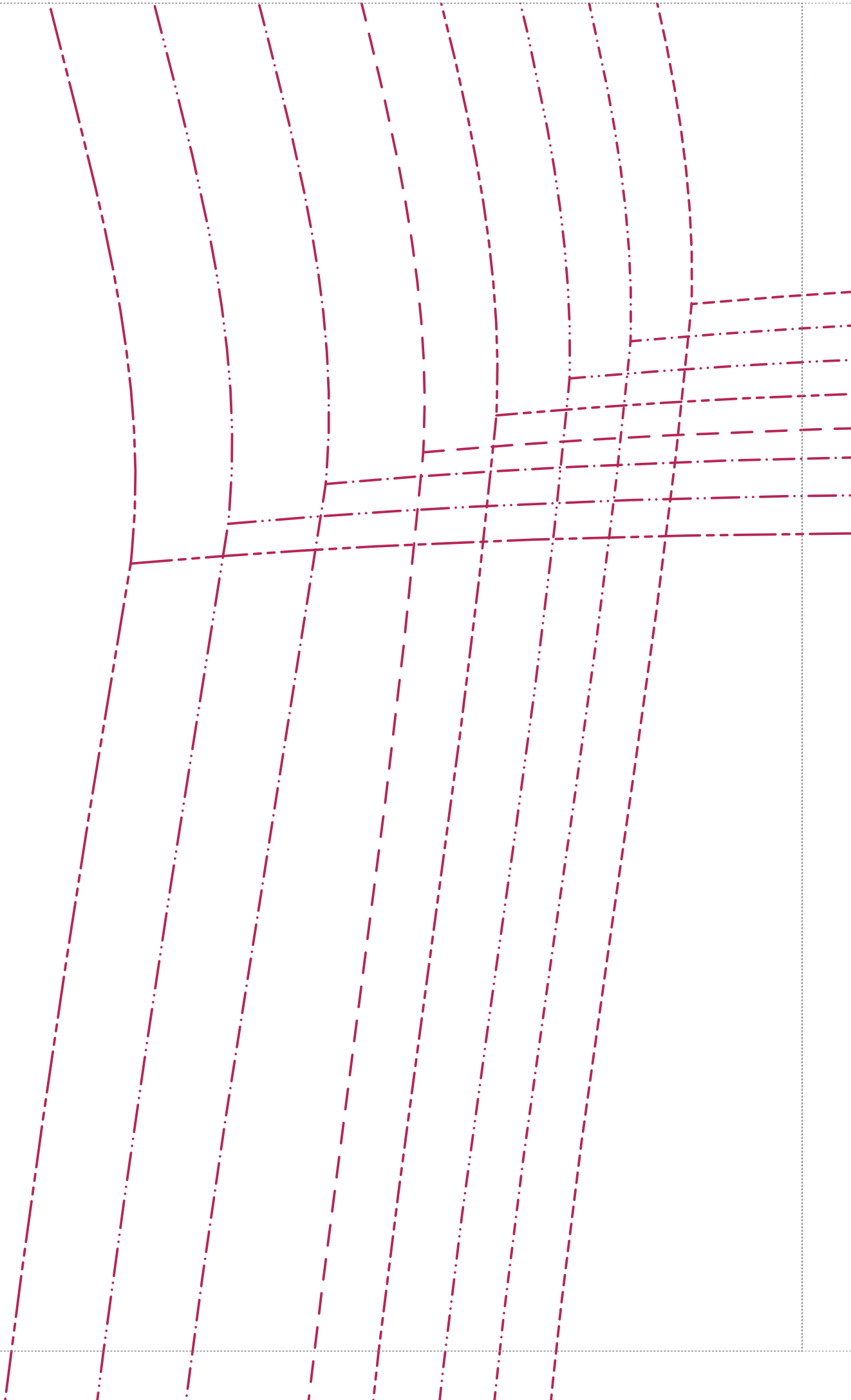
Teilung Skaterkleid











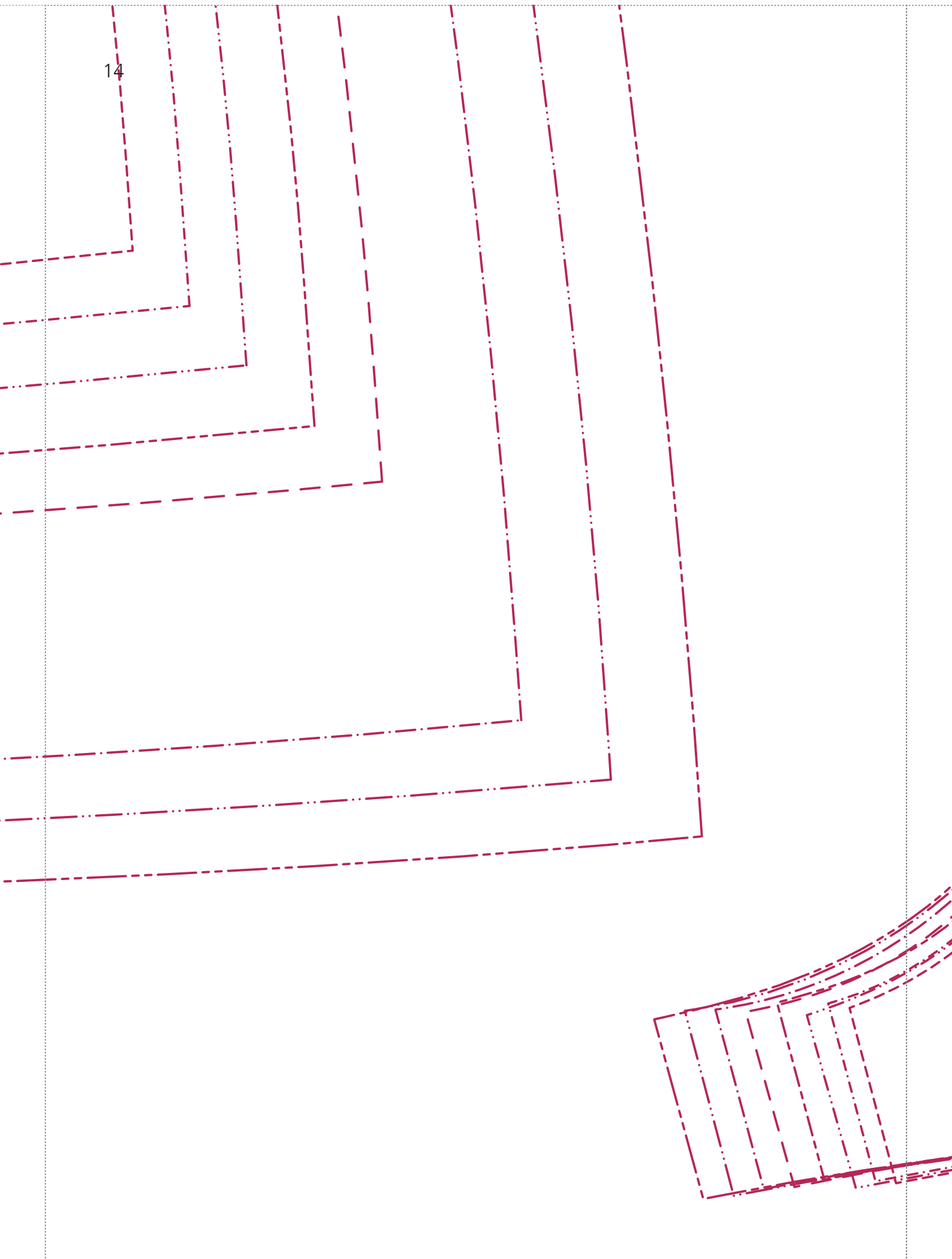
Teilung Skaterkleid



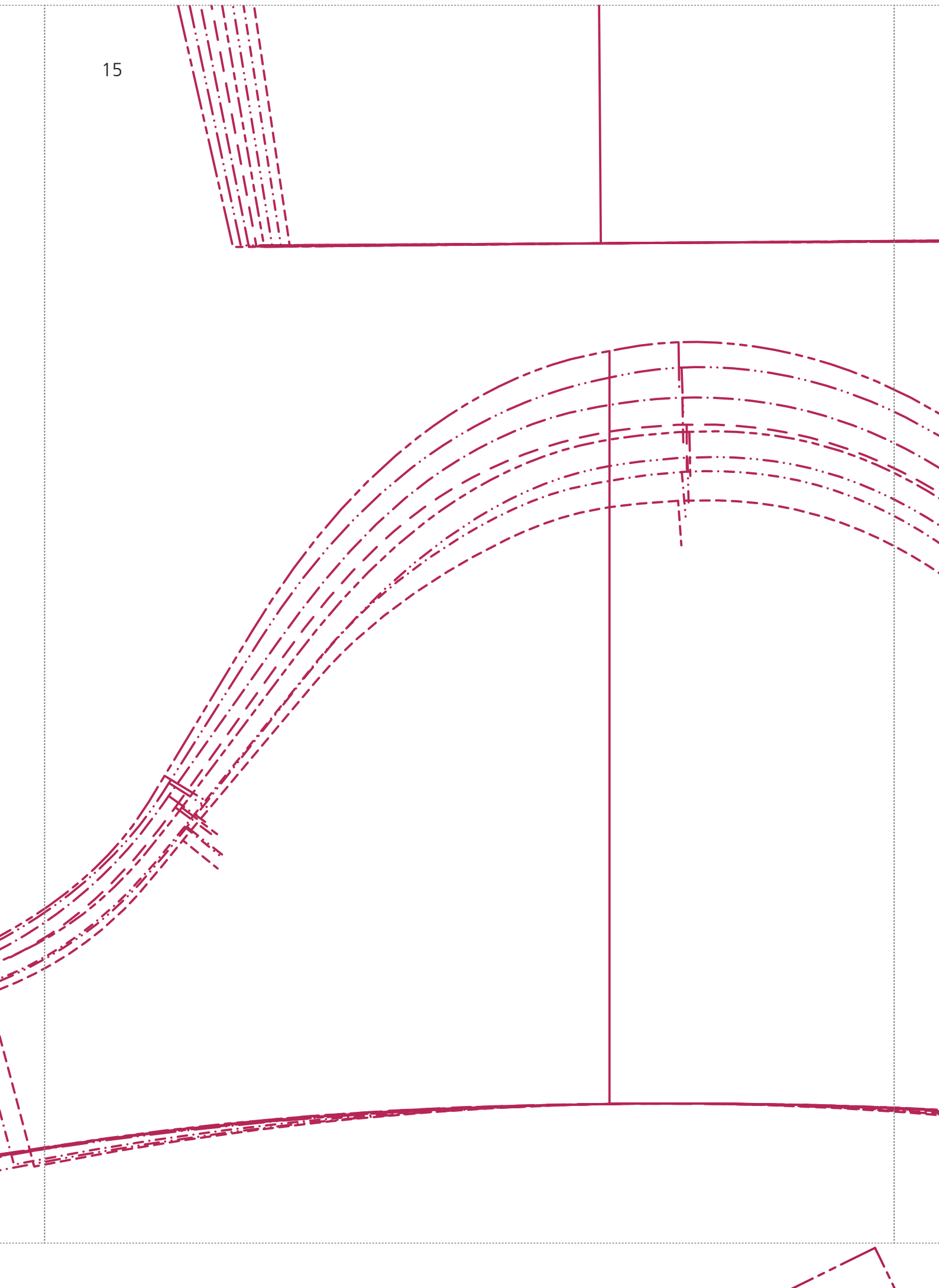


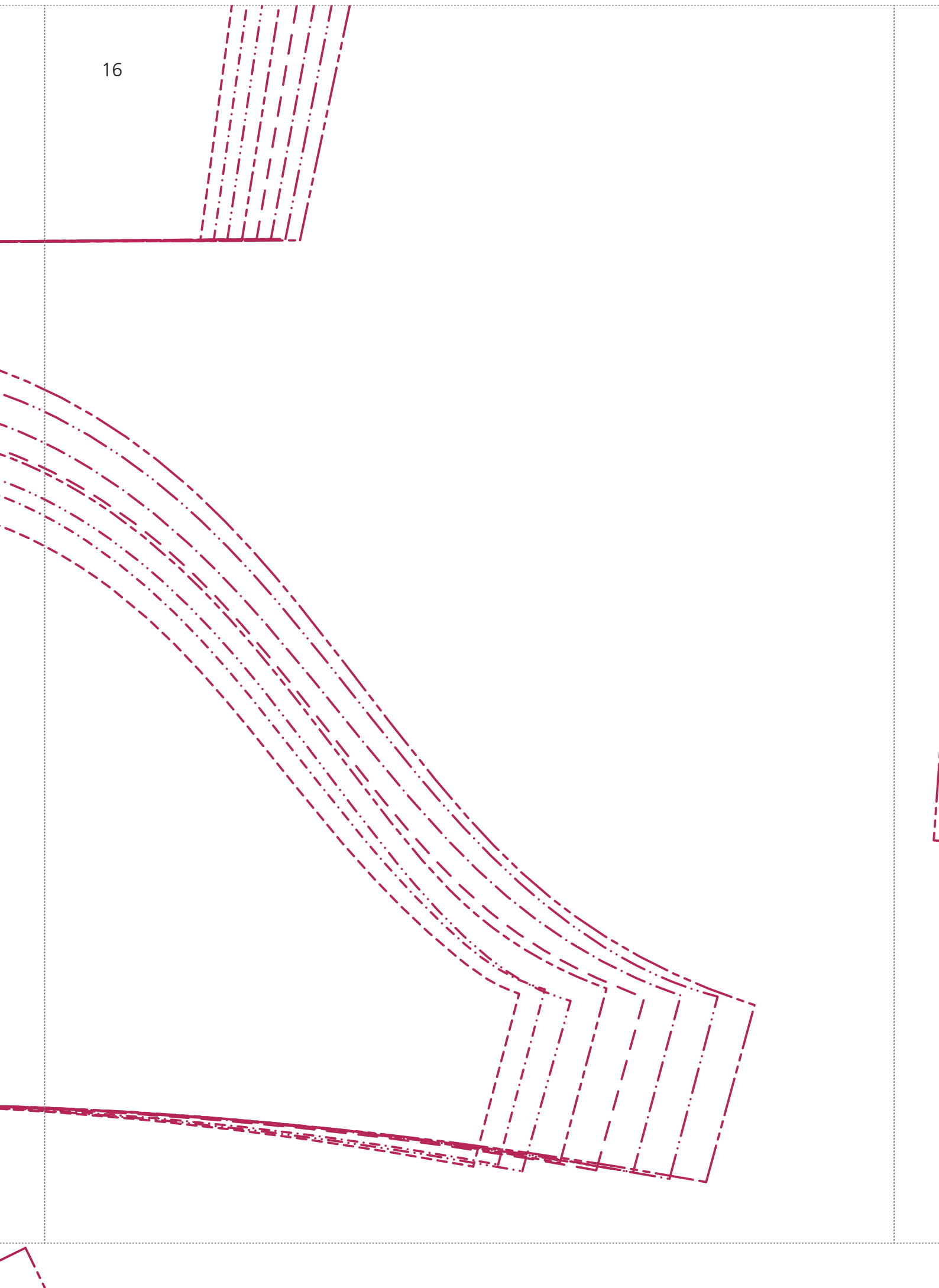
- XXS -----
- XS -.-.-.-.-
- S -.-.-.-.-
- M -----
- L - - - - -
- XL -.-.-.-.-
- XXL -.-.-.-.-
- 3XL -----

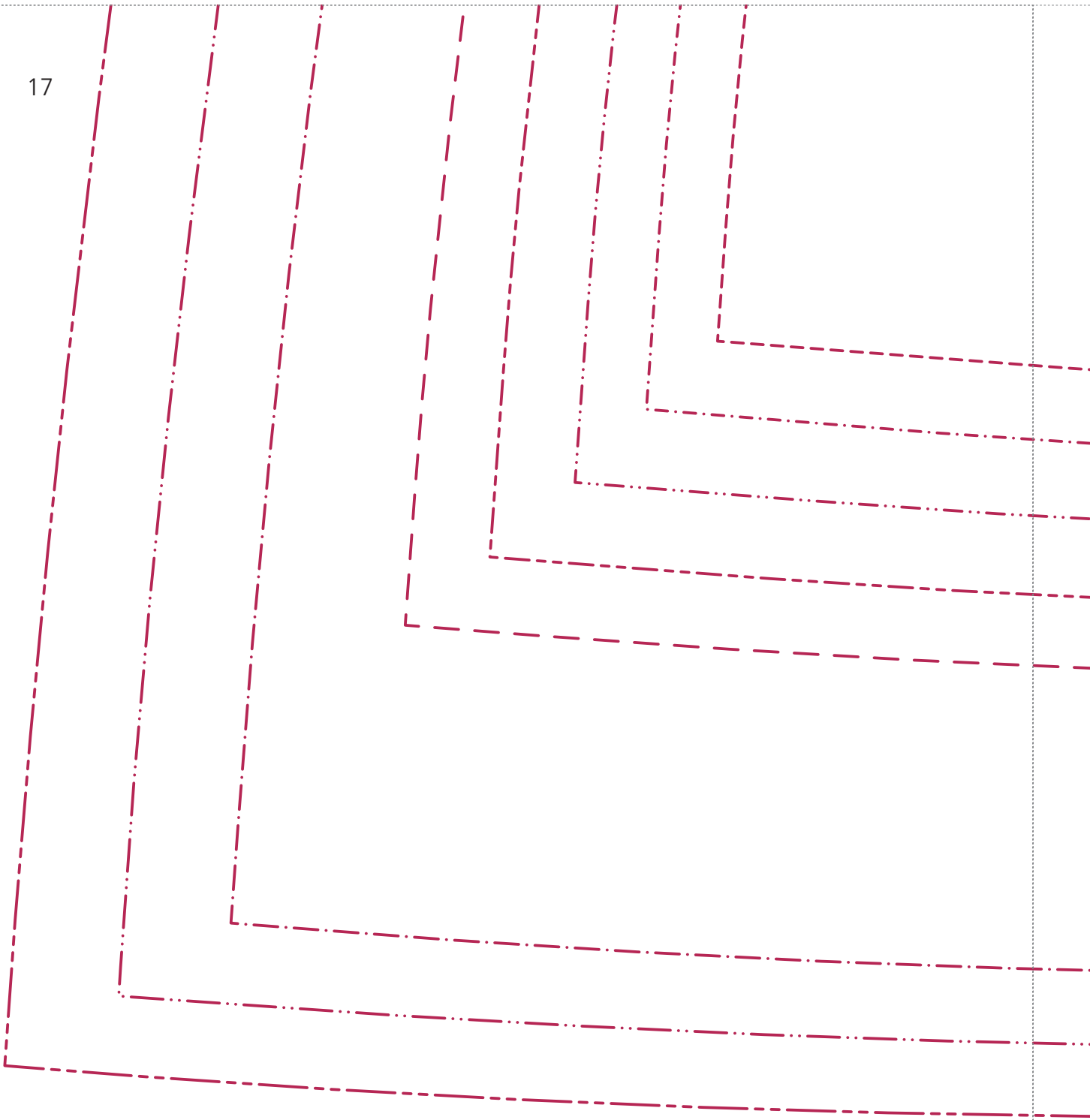
14



15

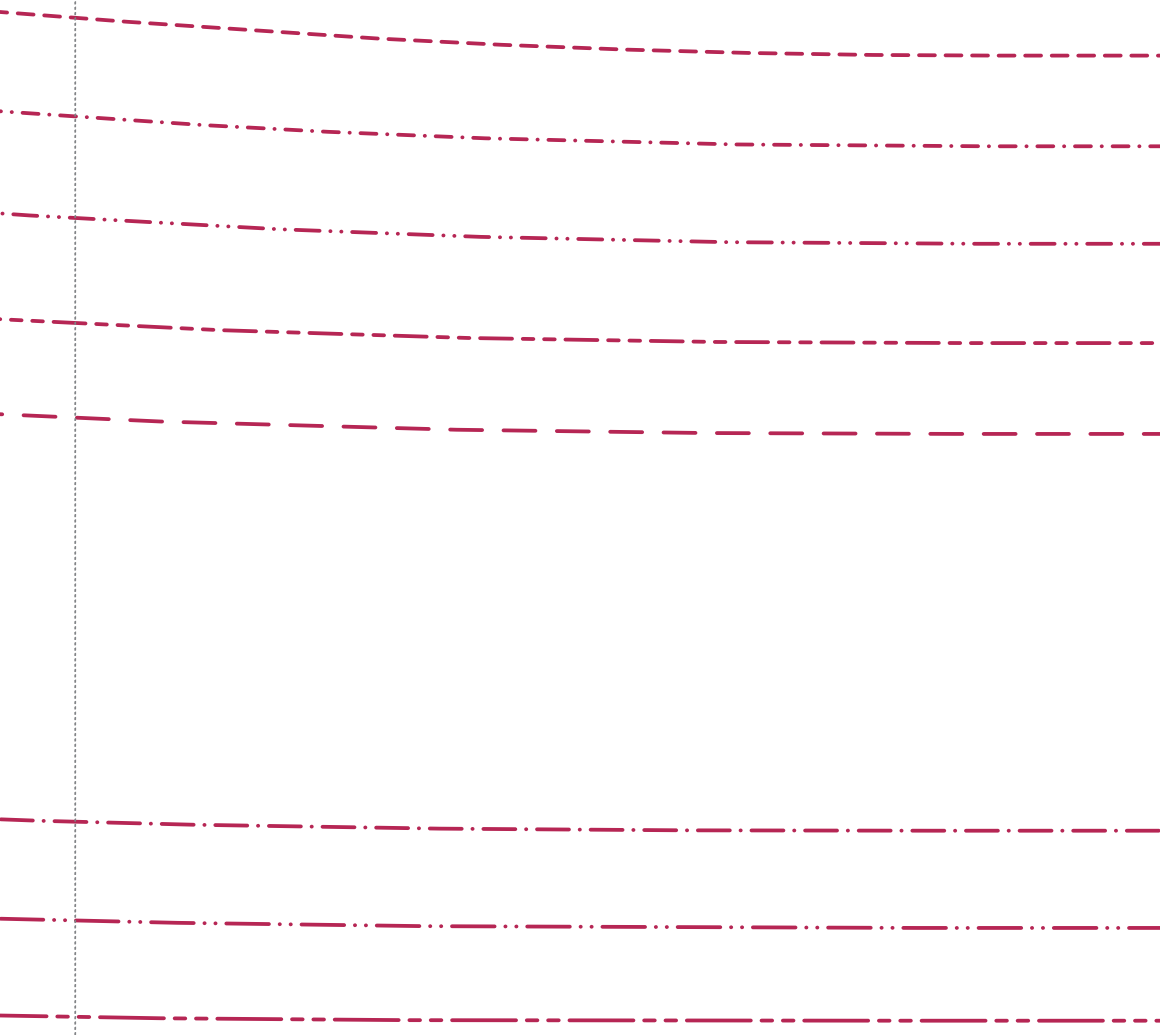


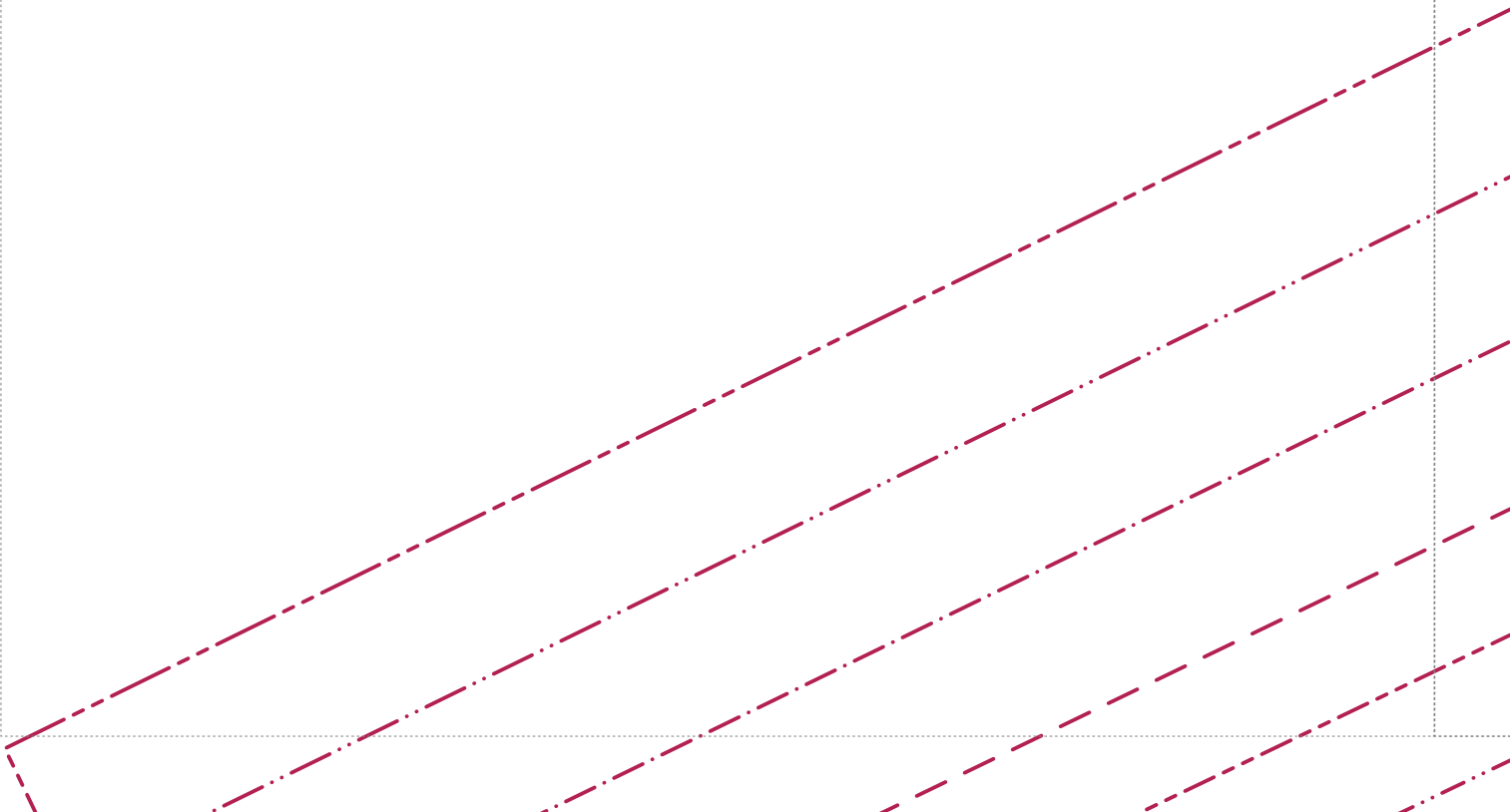


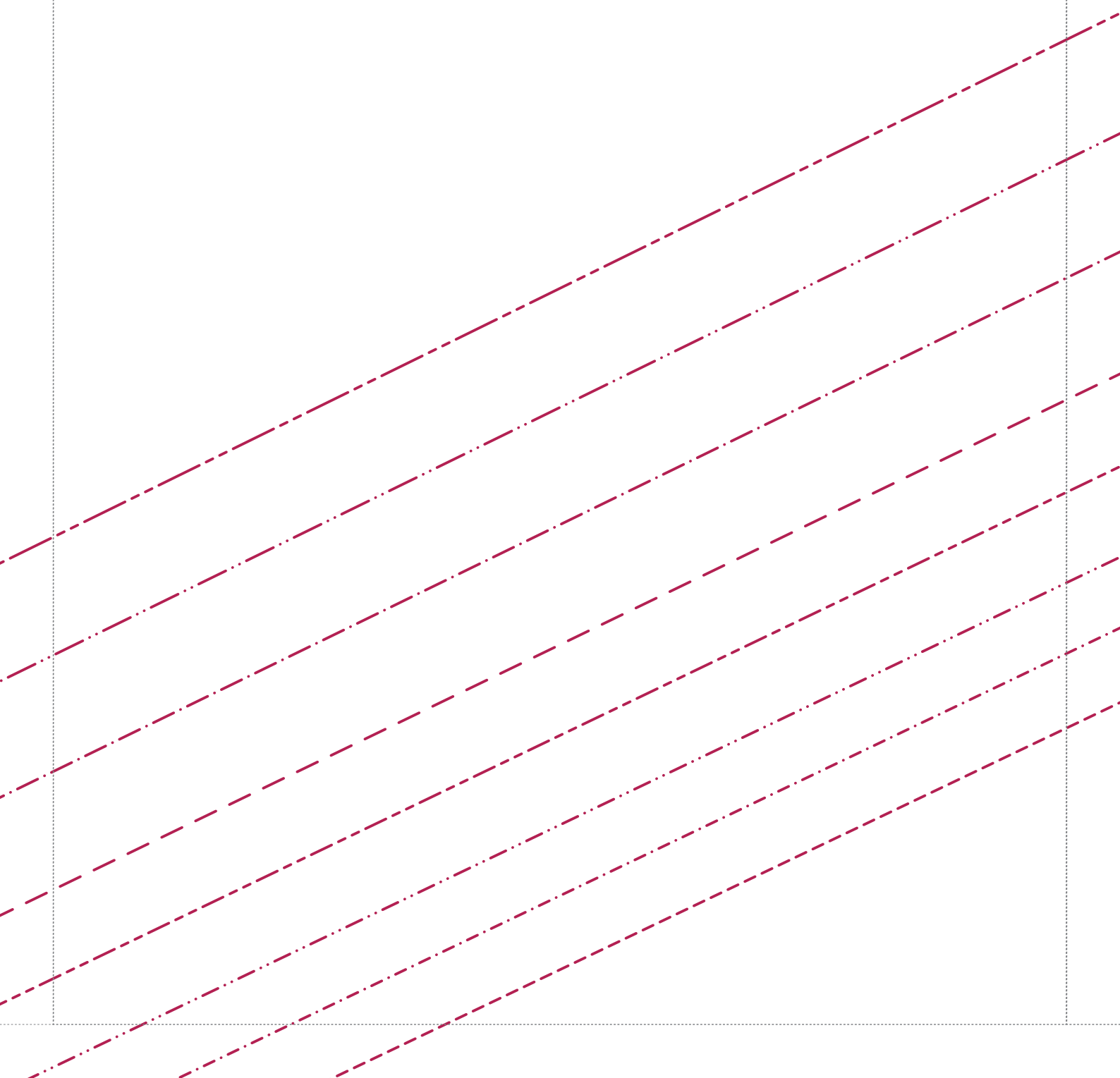


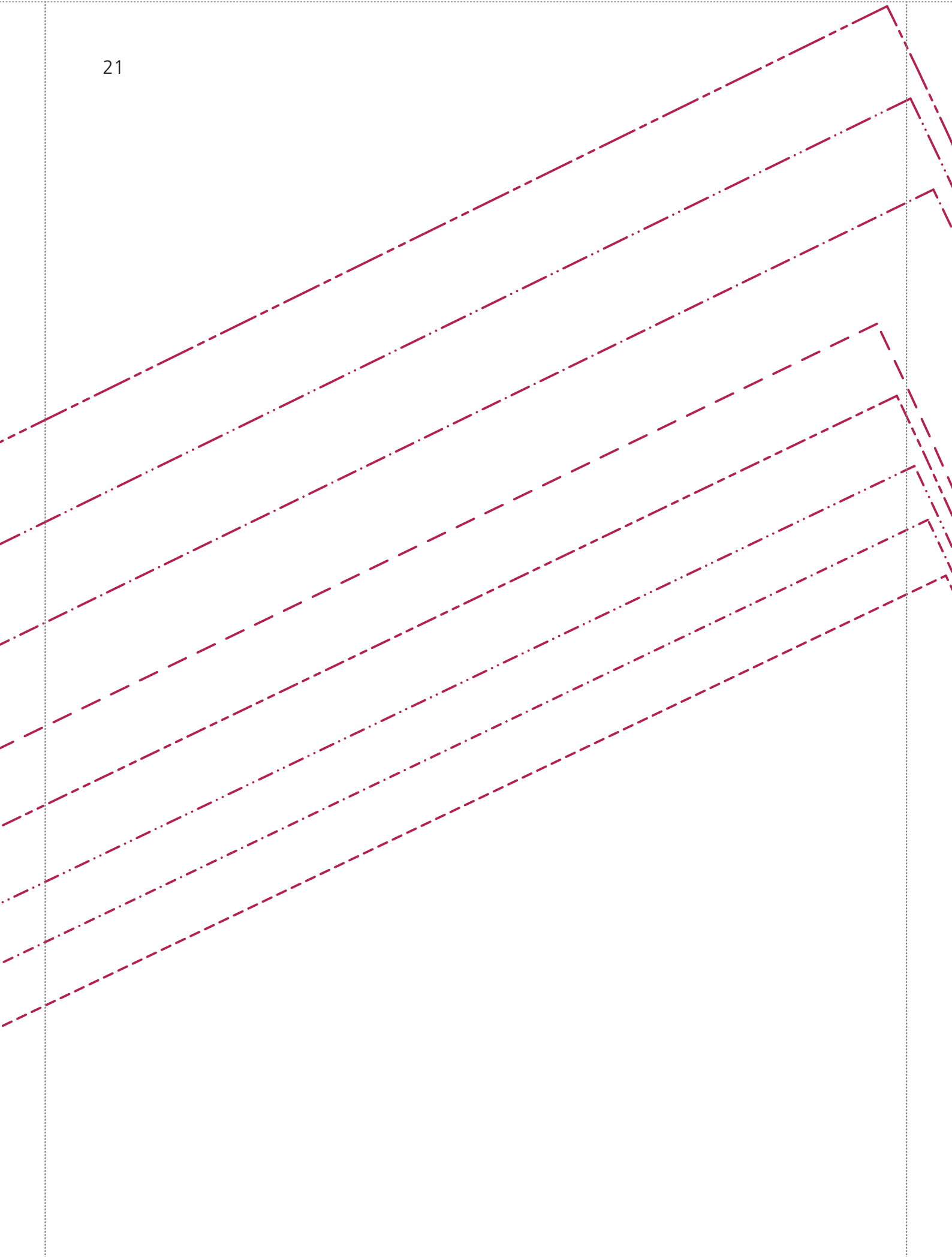
Damenshirt

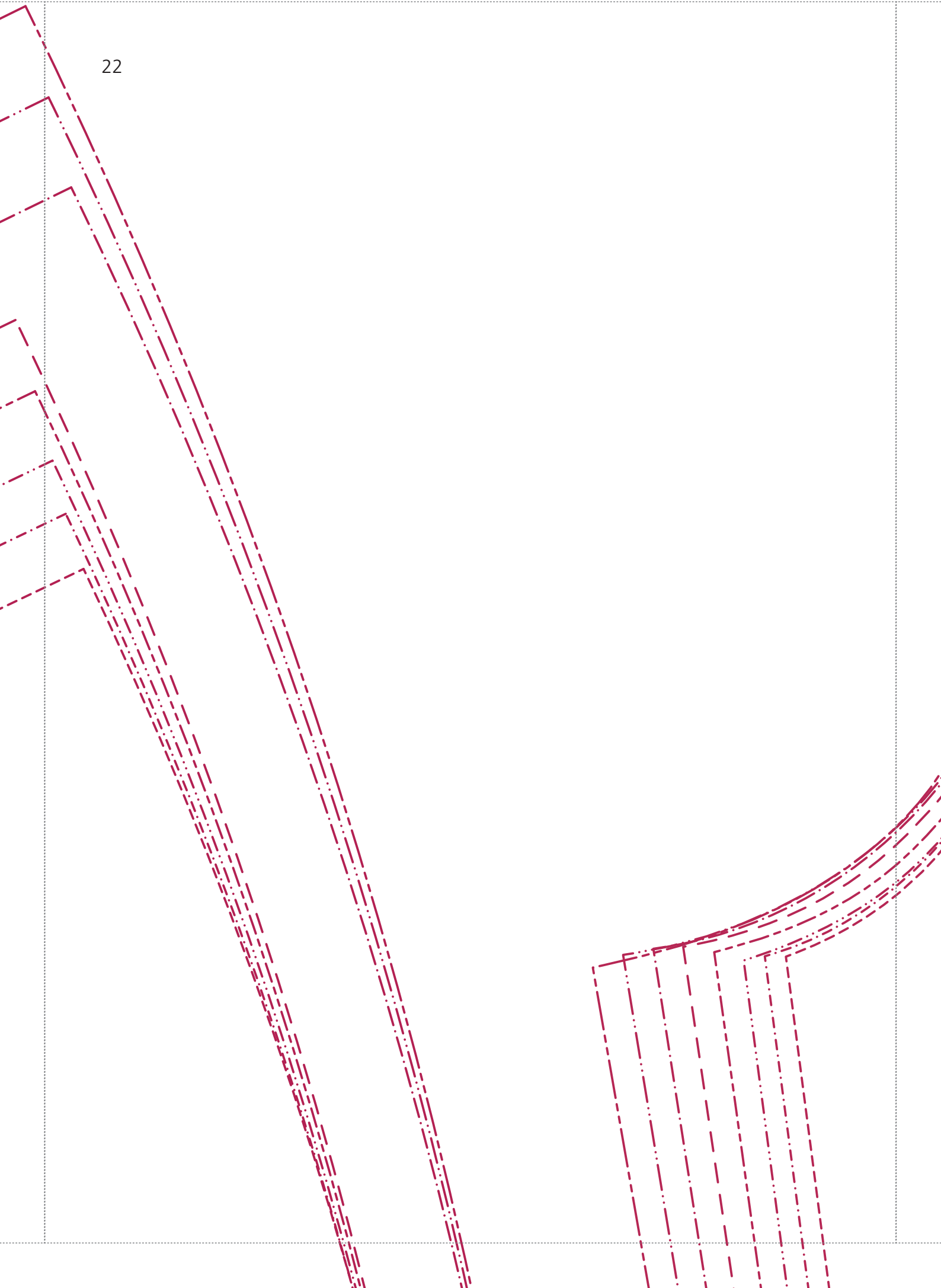
Rückenteil

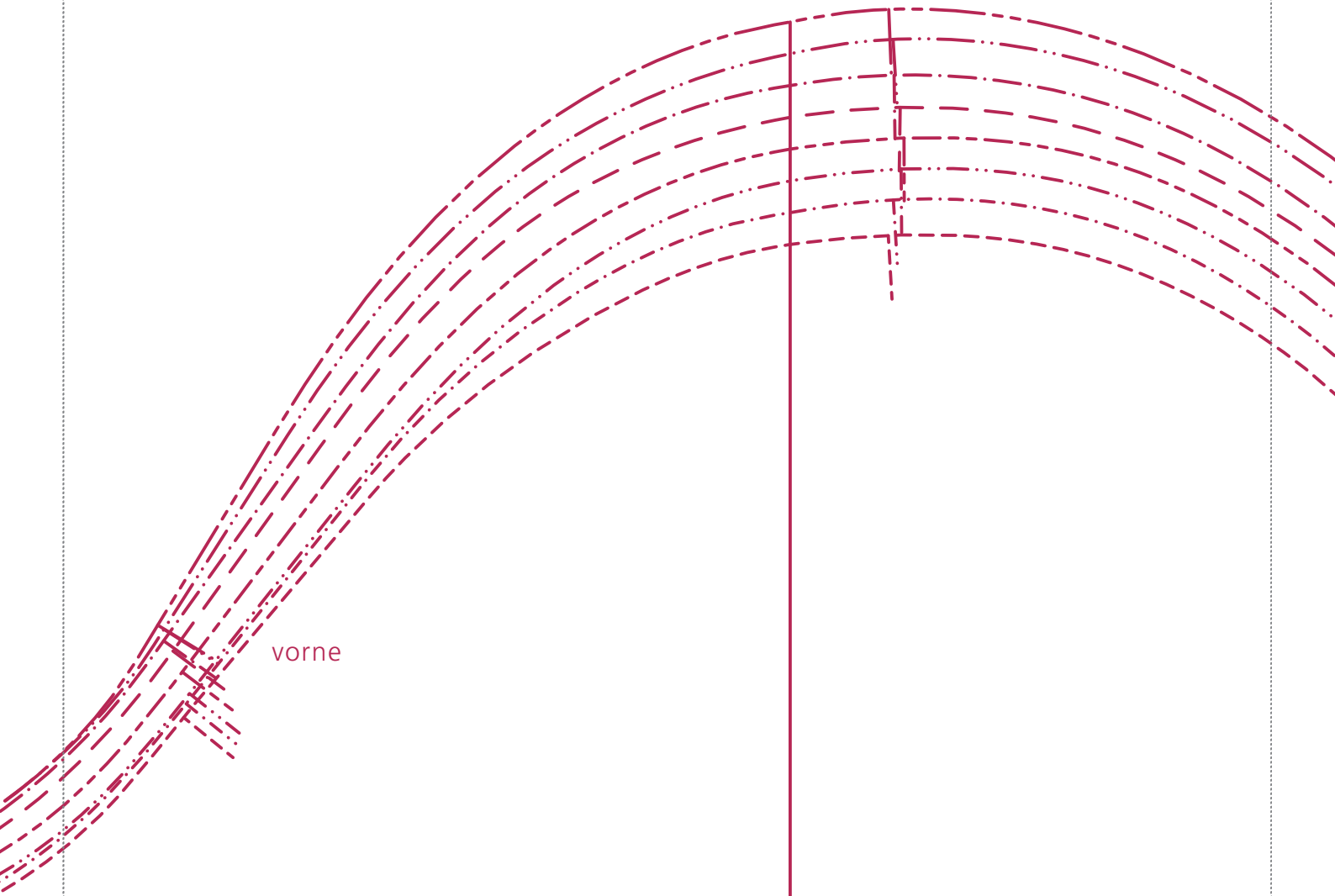






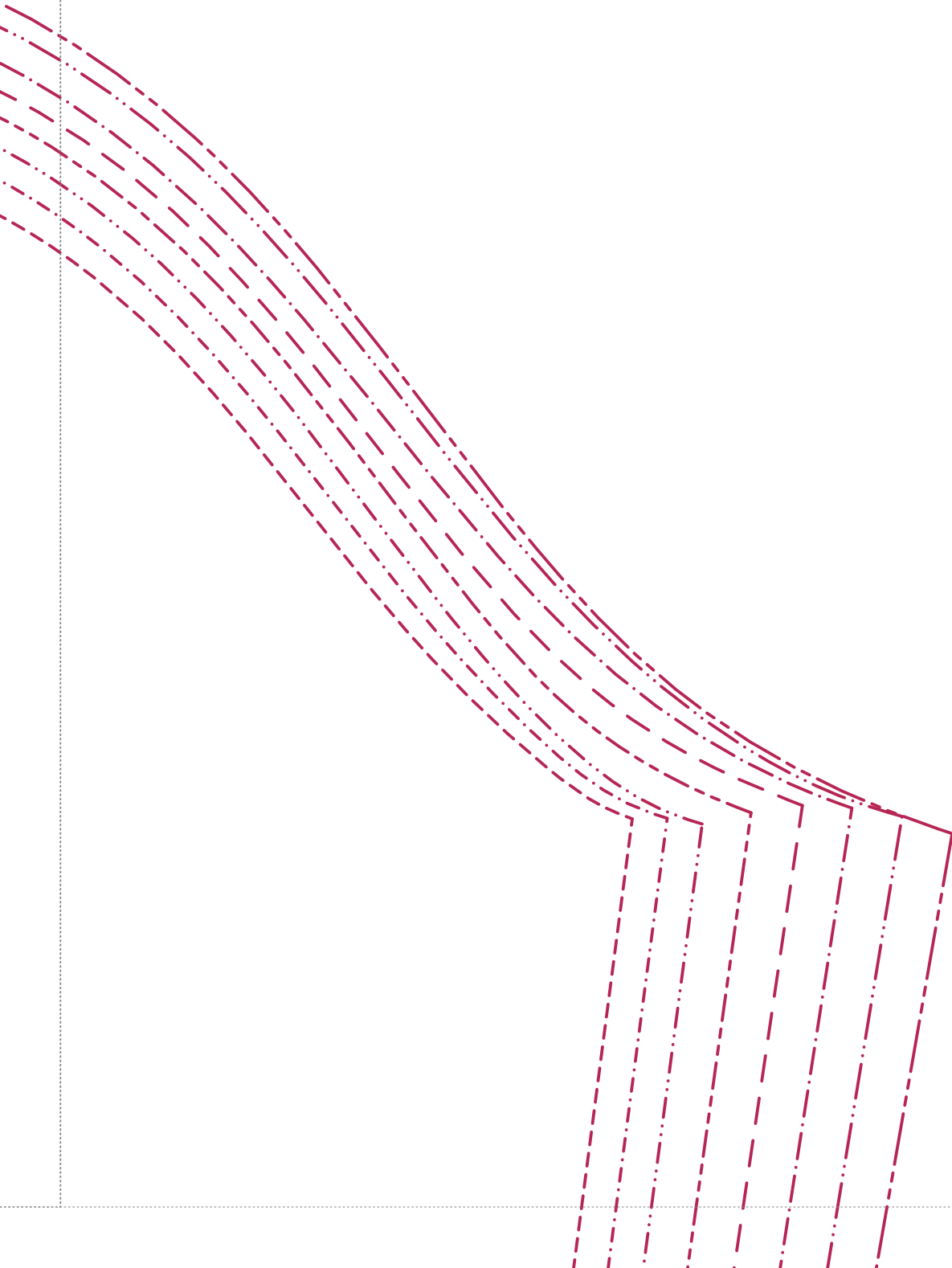






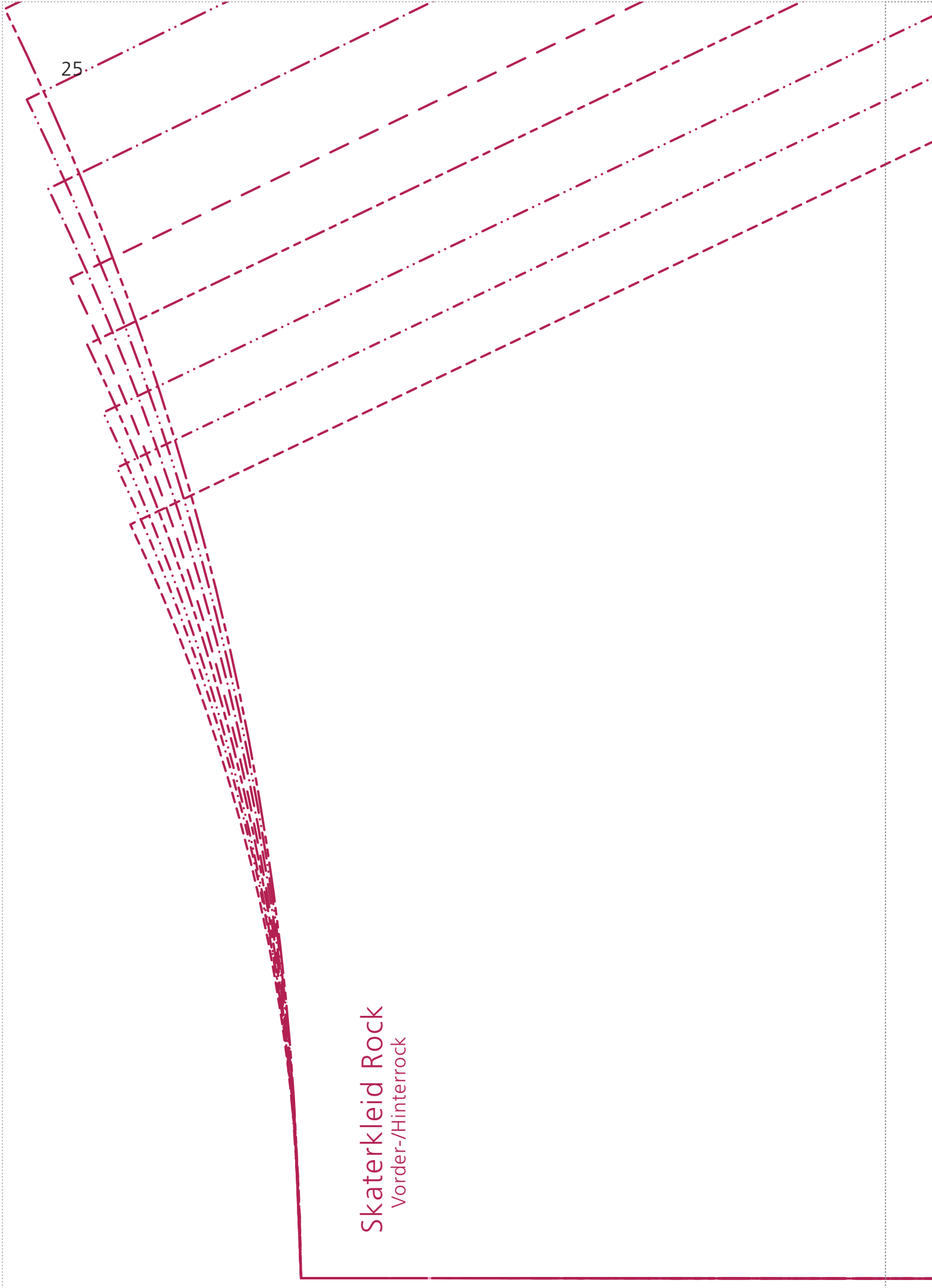
vorne

Fadenlauf

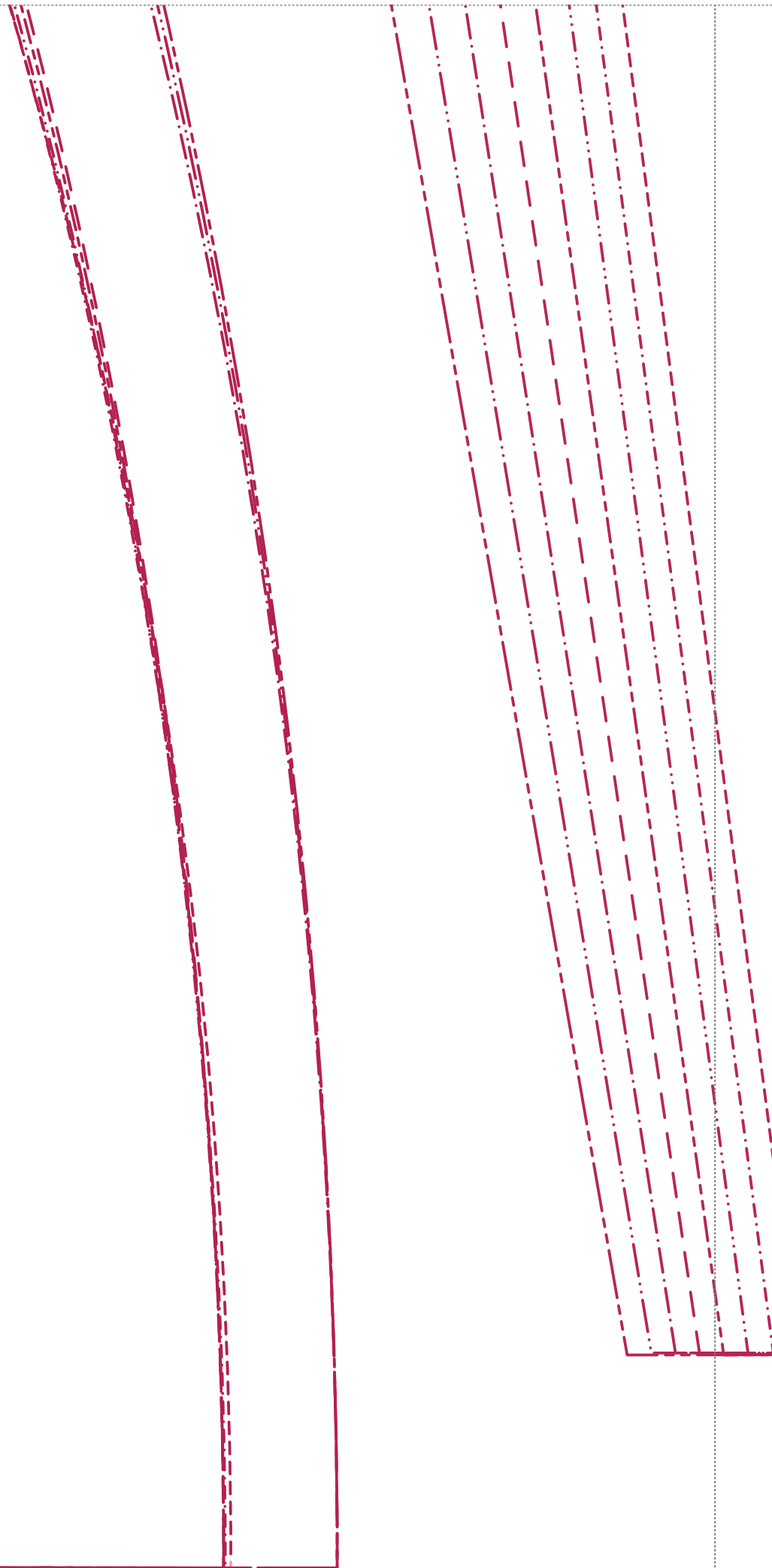


25

Skaterleid Rock
Vorder-/Hinterrock



26



Damenshirt
Ärmel 3/4

