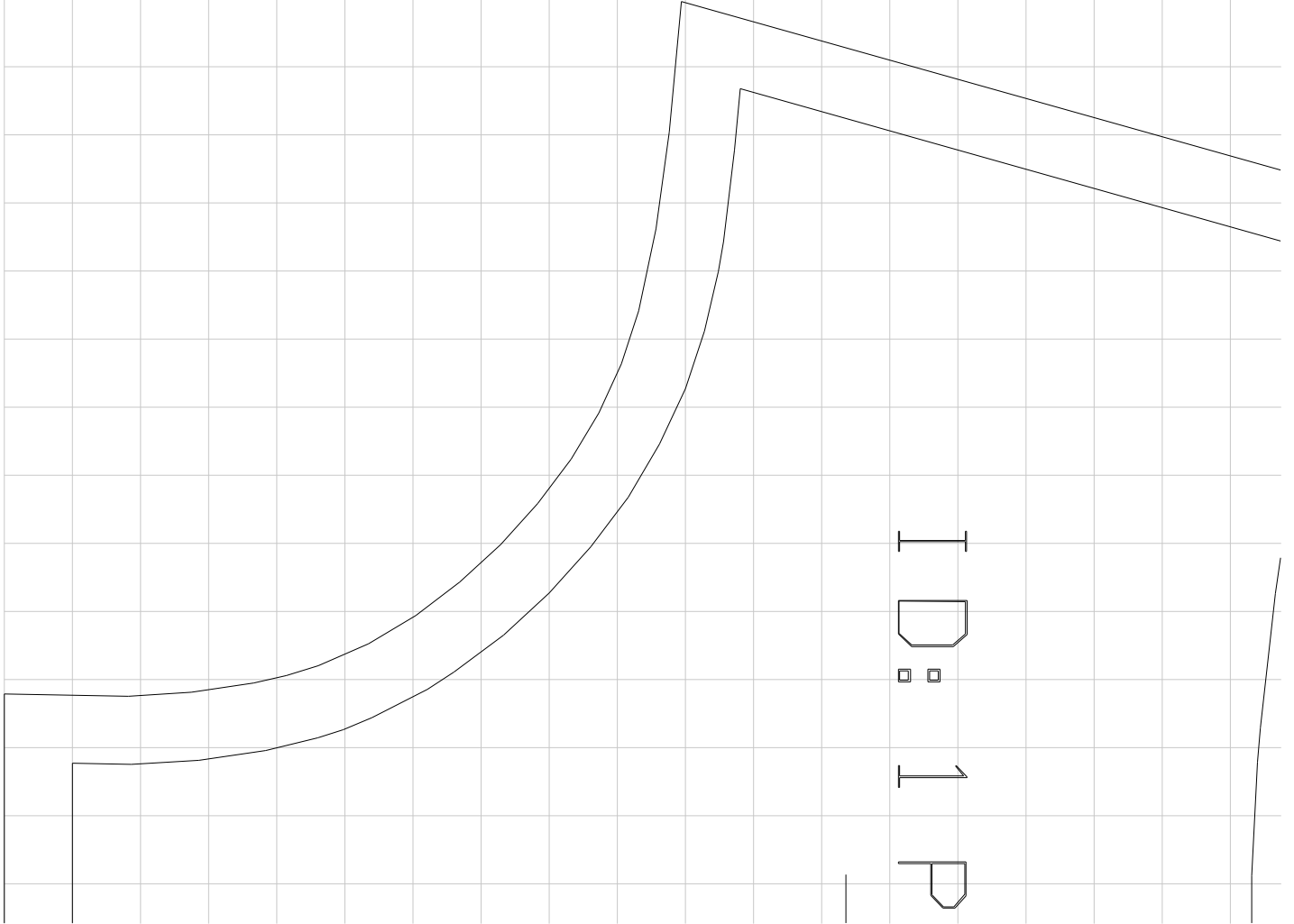


ID: TEST 5X5CM  
RÓZM: 36-180

WIERSZ 1 KOLUMNA 1  
ROW 1 COLUMN 1

ID: 1P



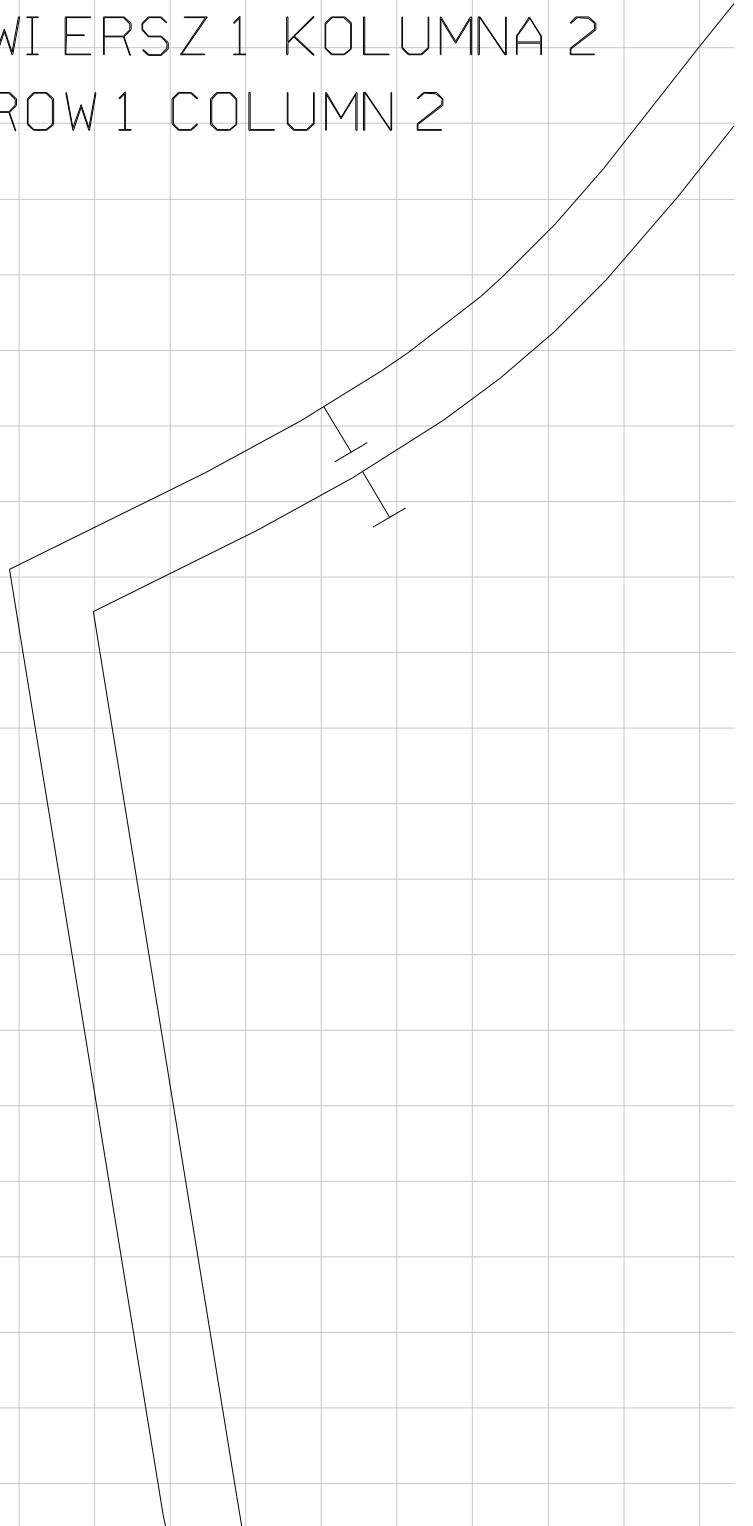
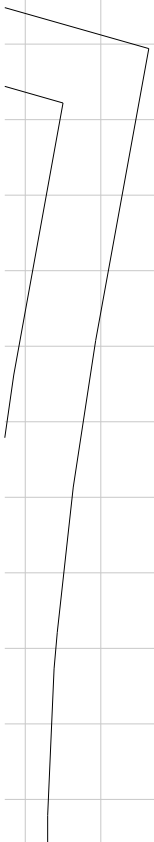
RZOD/FRONT W-BZA-14-03  
ROZMI: 30-180

WIERSZ 2 KOLUMNA 1  
ROW 2 COLUMN 1

A grid with 15 columns and 20 rows. A cell at row 3, column 1 is highlighted in light blue. A callout box with a black border points to this cell. The callout box contains the text 'WI ERSZ 3 KOLUMNA 1' and 'ROW 3 COLUMN 1'.

WI ERSZ 3 KOLUMNA 1  
ROW 3 COLUMN 1

WI ERSZ 1 KOLUMNA 2  
ROW 1 COLUMN 2

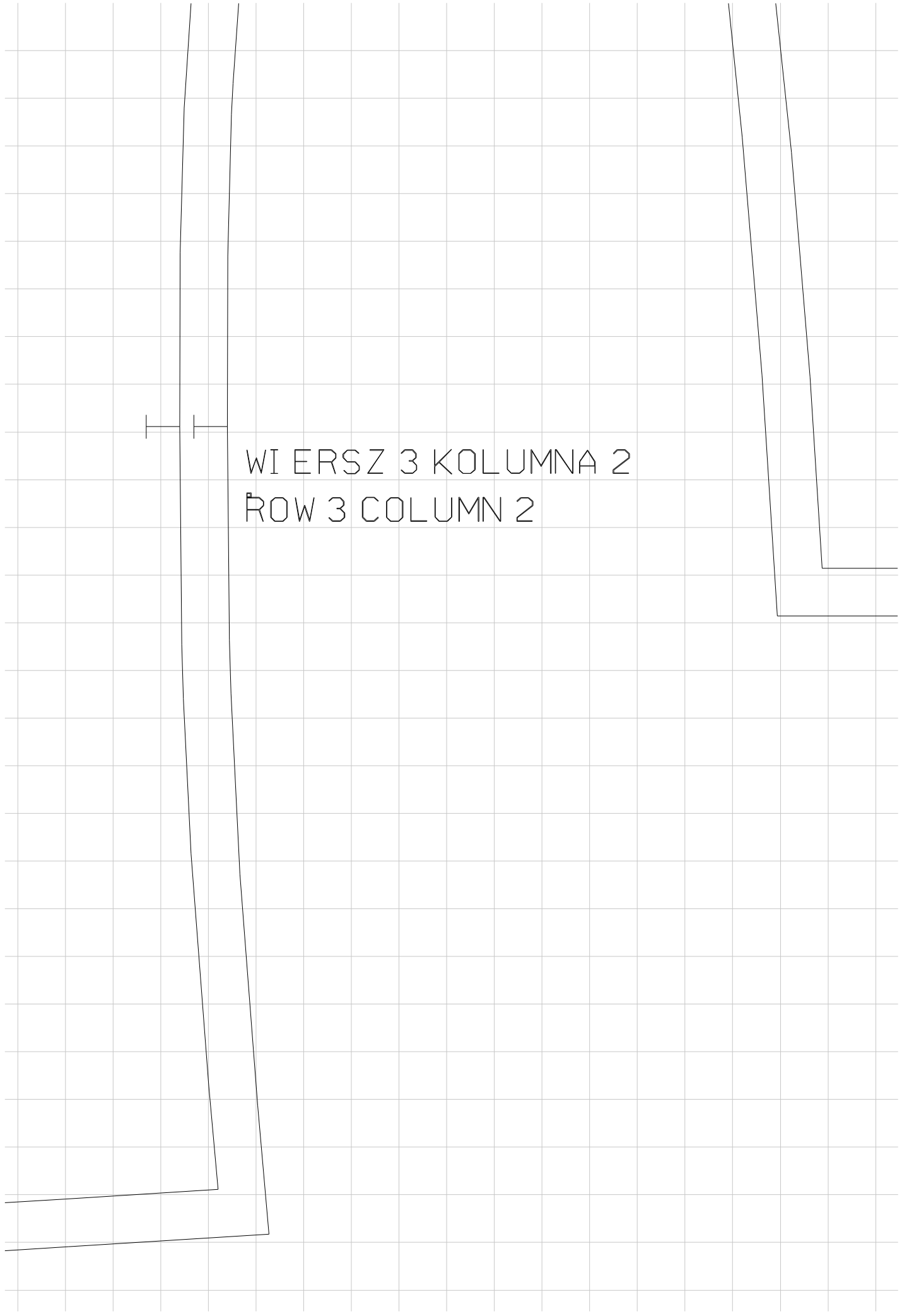


WI ERSZ 2 KOLUMNA 2

ROW 2 COLUMN 2



WI ERSZ 3 KOLUMNA 2  
ROW 3 COLUMN 2

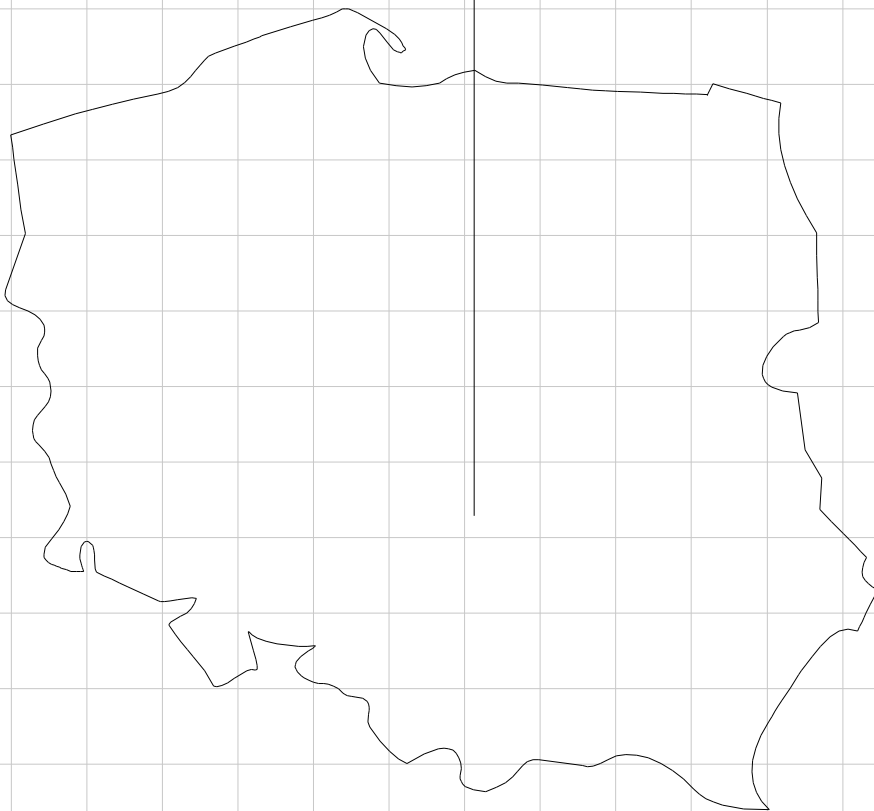


WIERSZ 1 KOLUMNA 3  
ROW 1 COLUMN 3

ID: 3  
PREKAW/SLEEVE W  
PROZM: 36-18K

BZA-14-03

WIERSZ 2 KOLUMNA 3  
ROW 2 COLUMN 3



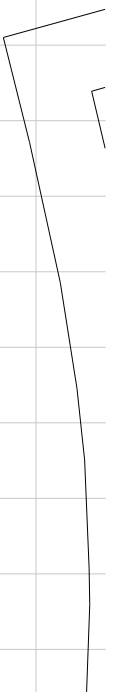
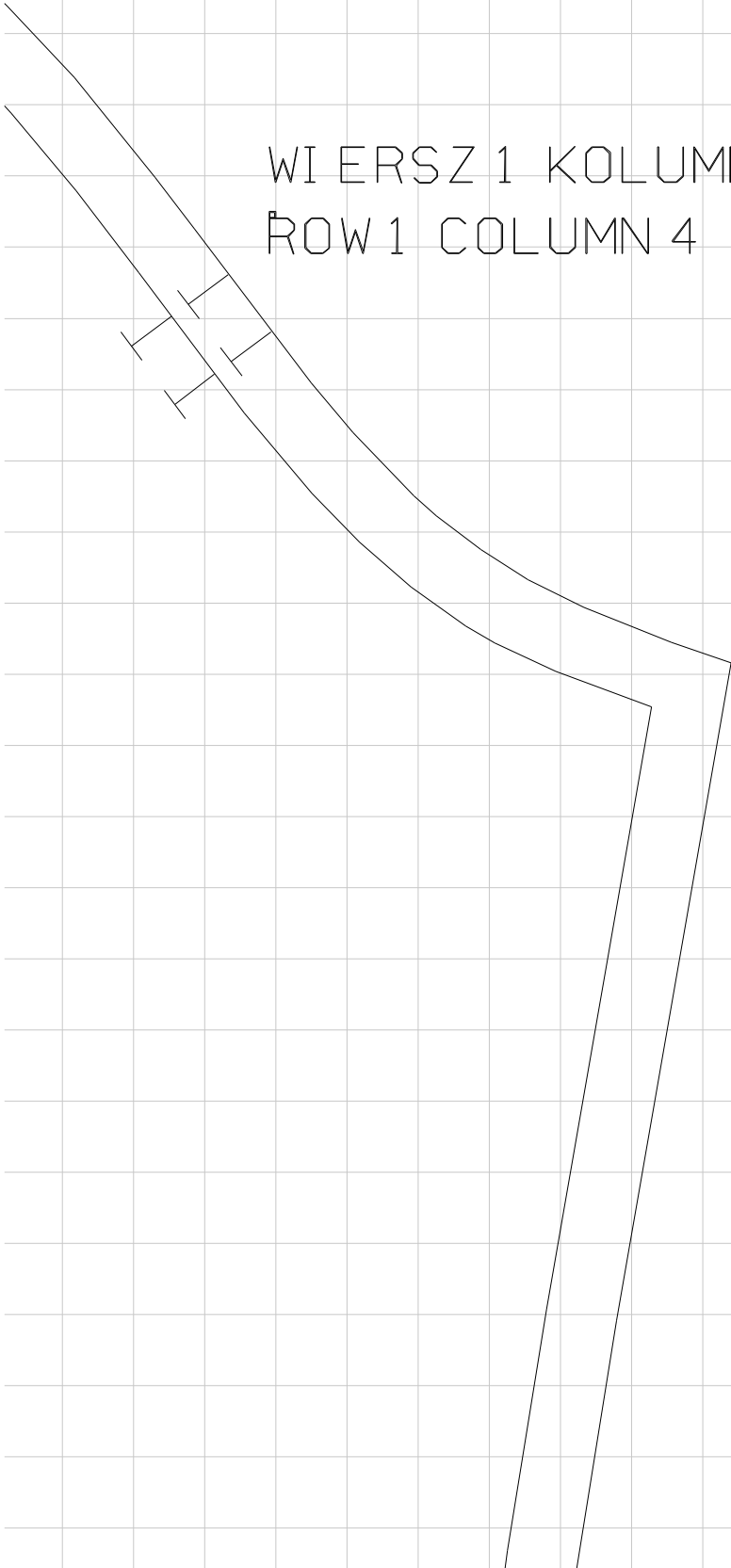


WI ERSZ 3 KOLUMNA 3  
ROW 3 COLUMN 3

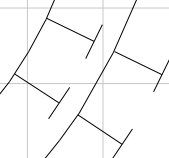
---

---

WIERSZ 1 KOLUMNA 4  
ROW 1 COLUMN 4



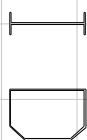
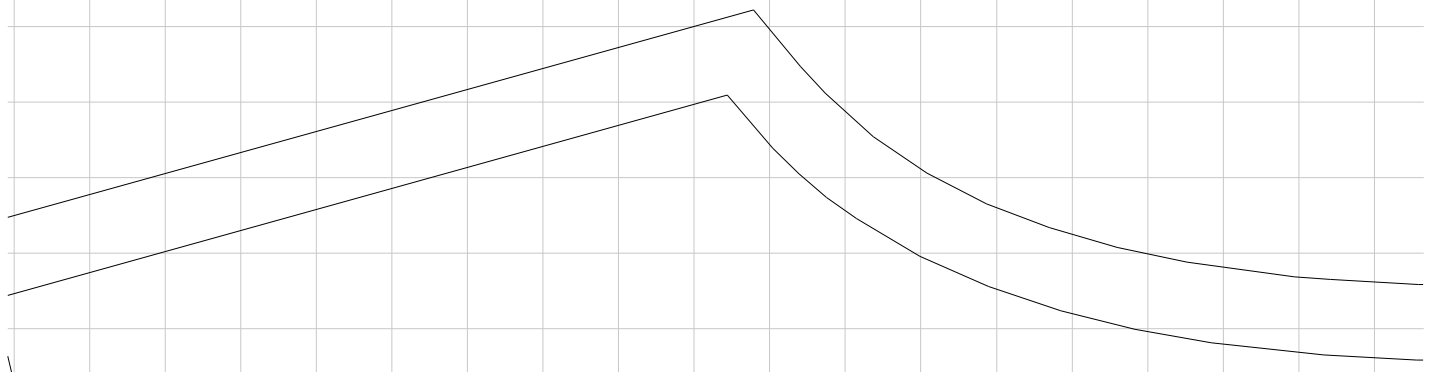
WIERSZ 2 KOLUMNA 4  
ROW 2 COLUMN 4



WI ERSZ 3 KOLUMNA 4  
ROW 3 COLUMN 4



WIERSZ 1 KOLUMNA 5  
ROW 1 COLUMN 5



□ □

2  
TYL/BM  
ROZM  
36-180  
BZA-14-03

WIERSZ 2 KOLUMNA 5  
ROW 2 COLUMN 5



WIERSZ 3 KOLUMNA 5

ROW 3 COLUMN 5



WIERSZ 1 KOLUMNA 6  
ROW 1 COLUMN 6



WIERSZ 2 KOLUMNA 6  
ROW 2 COLUMN 6



WI ERSZ 3 KOLUMNA 6  
ROW 3 COLUMN 6

WIERSZ 1 KOLUMNA 7  
ROW 1 COLUMN 7

I I

ID: 4 KAPITUR/HOOD W BZA  
ROZM: 36-180

14-03

WIERSZ 2 KOLUMNA 7  
ROW 2 COLUMN 7

ID: SKIESZ



WI ERSZ 3 KOLUMNA 7  
ROW 3 COLUMN 7

WENY/POCKET WŁ. BZA-14-03  
ROZM: 36-180