



TODDLER WAISTCOAT PATTERN
IN 3 SIZES: 2-3YRS, 3-4 YRS, 4-5 YRS

Barmy Beetroot





| SIZE | CHEST (CM) | PDF PAGES |
|--------|------------|-----------|
| Age 2+ | 55cm | 3-10 |
| Age 3+ | 57cm | 11-18 |
| Age 4+ | 59cm | 19-26 |

DESCRIPTION:

Waistcoats are so under-worn, and often reserved for formal occasions, but why?? A simple and savvy waistcoat can be used to brighten up a casual outfit and kids look ridiculously cute in them. This pattern is quick, simple, easy to make, and you don't need much fabric, so good for using up off cuts. Perhaps turn something old in to something new? An old shirt works fab.

MATERIALS:

Main Fabric for front: cotton, corduroy, linen, denim, even leather for that cowboy look! Go ahead and experiment. Texture and pattern works especially well on waistcoats

Backing Fabric: In a matching or heavier weight fabric than above

Lining: A basic polyester lining or lightweight cotton

Notions: 3 Buttons and matching thread, interfacing for front panels if using light-medium weight cotton

IMPORTANT!

This is a digital PDF pattern which you need to print out and tape together. Make sure your printer is not set to scale or fit to page when you print, as the sizing will be incorrect. Use the 1 inch square opposite as a reference to check print accuracy.

Each size is on different pages, so just print the pages you need.

A 1/2 inch seam allowance has been marked on each pattern.

1 INCH

Barmy Beetroot



By: Amy Beeton

Blog: www.barmybeetroot.co.uk

S E A M A L L O W A N C E

FRONT PART
A2

CUT AND STICK LINE

FRONT PART

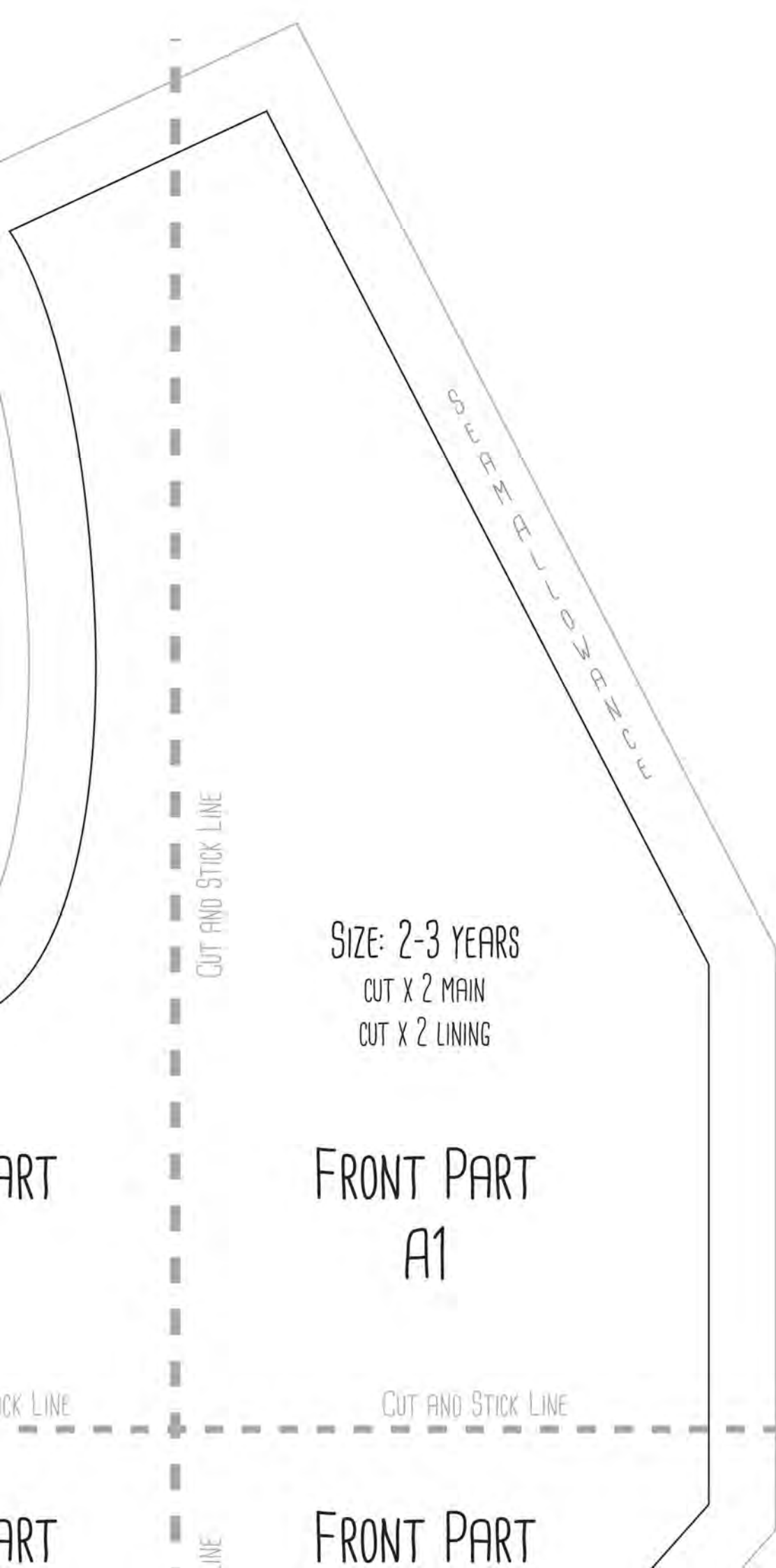
CUT AND STICK LINE

CUT AND STICK LINE

SIZE
C
CU

FRONT

FRONT



SIZE: 2-3 YEARS

CUT X 2 MAIN

CUT X 2 LINING

FRONT PART
A1

PAGE 4

WWW.BARMYBEETROOT.CO.UK

C
L
O
W
A
N
C
E

CUT AND STICK LINE

FRONT PART
B2

CUT AND STICK LINE

LINE

CUT AND STICK LINE

RT

CUT AND STICK LINE

FRONT PART
B1

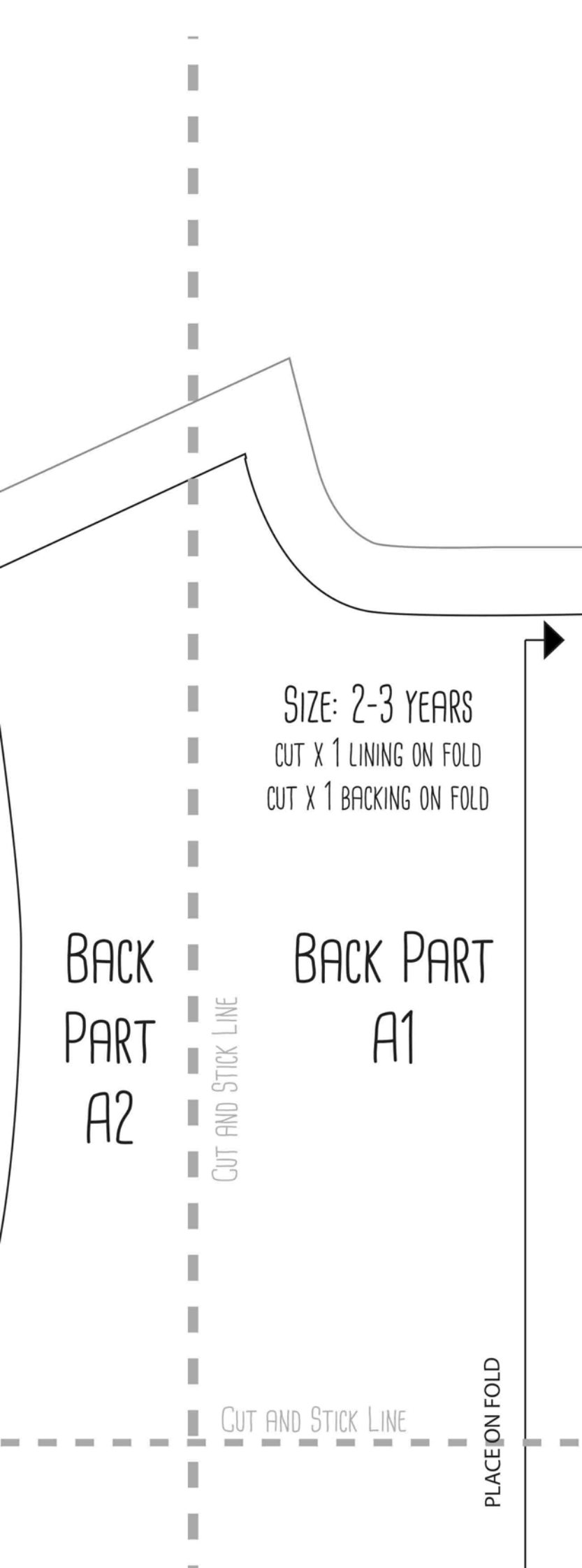
Size: 2
CUT X 1 L
CUT X 1 B

BACK
PART
A2

CUT AND STICK LINE

BAC

CUT AND STICK



SIZE: 2-3 YEARS
CUT X 1 LINING ON FOLD
CUT X 1 BACKING ON FOLD

BACK
PART
A2

BACK PART
A1

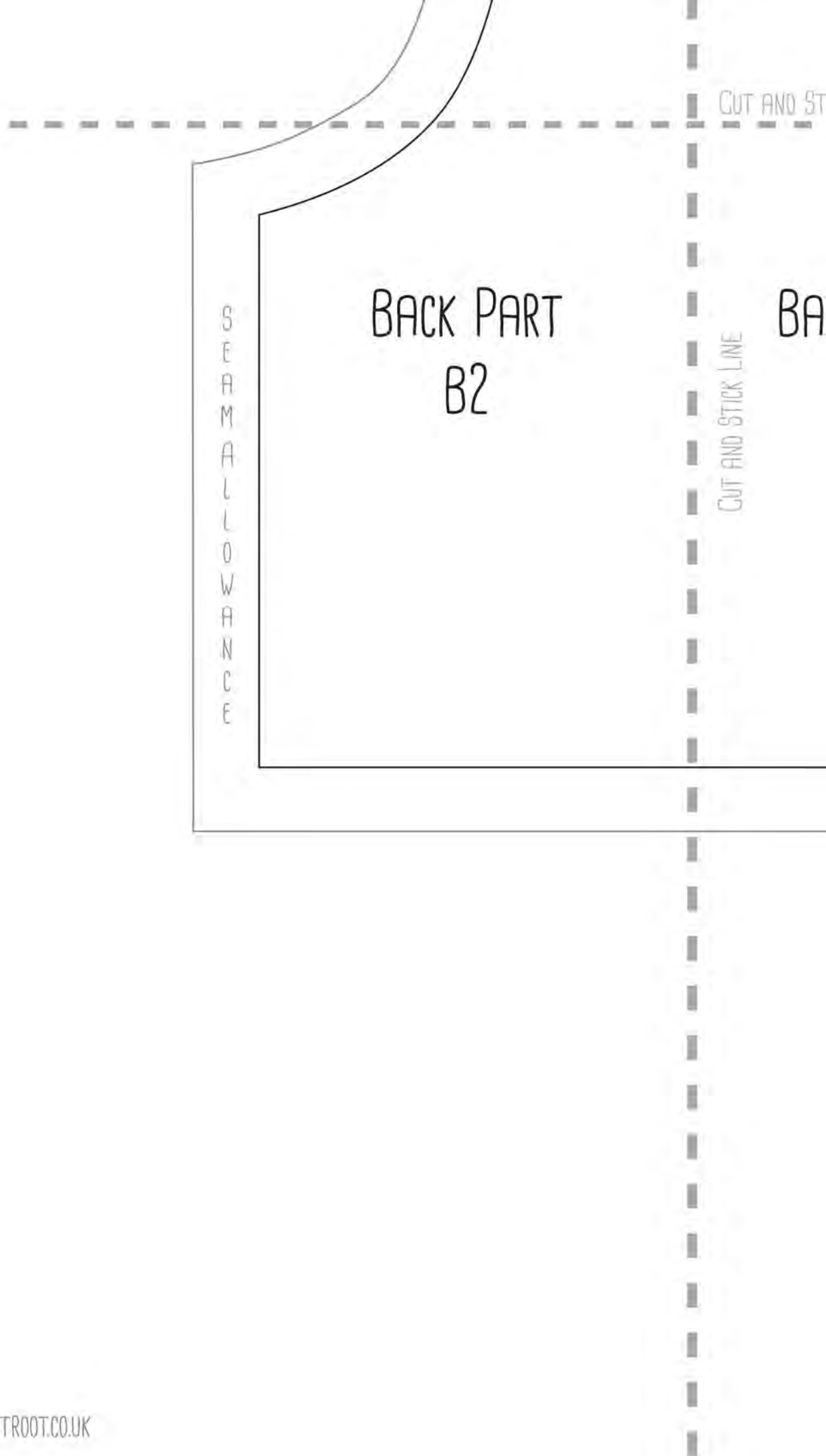
CUT AND STICK LINE

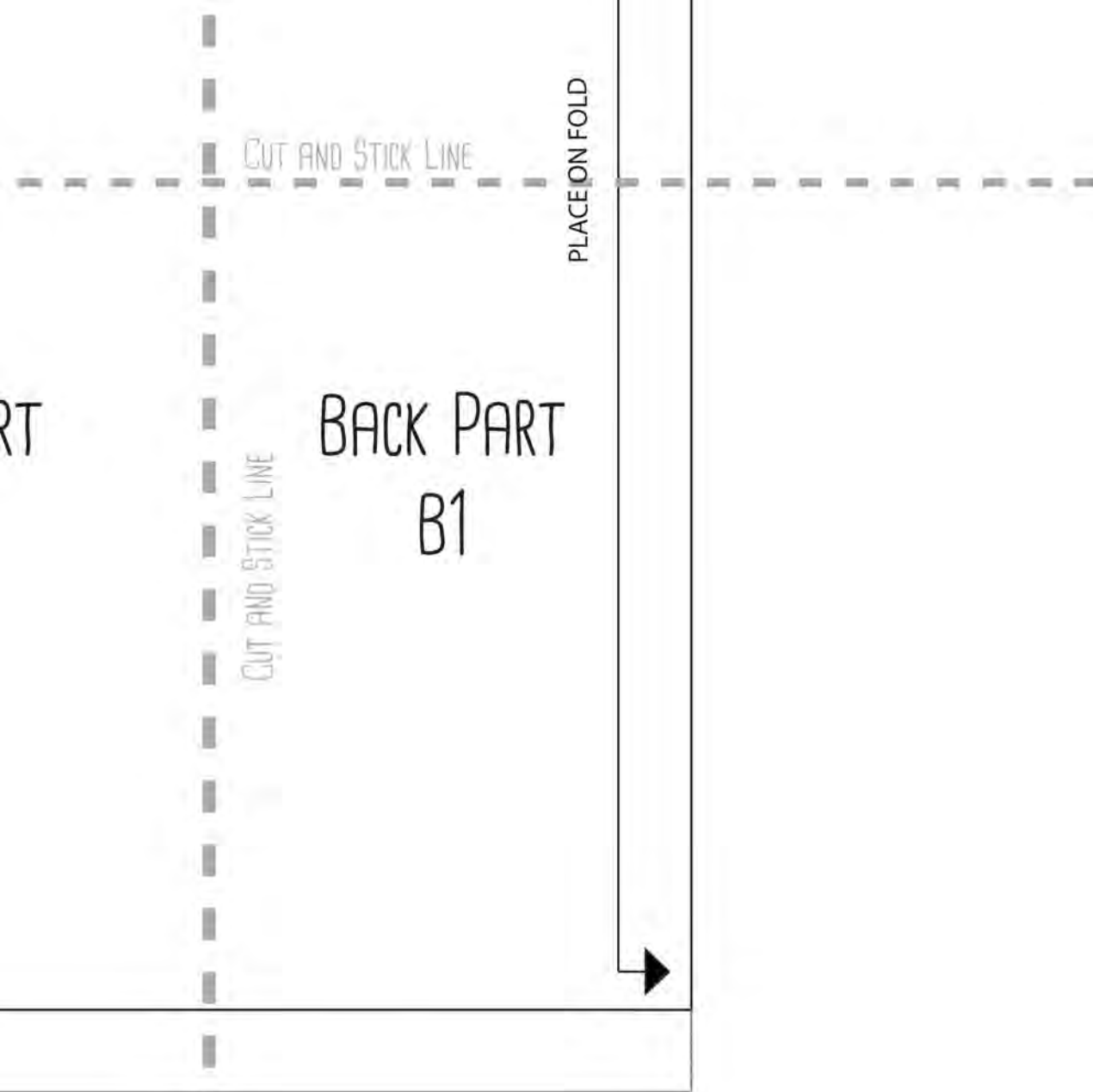
CUT AND STICK LINE

PLACE ON FOLD

PAGE 8

WWW.BARMYBEETROOT.CO.UK



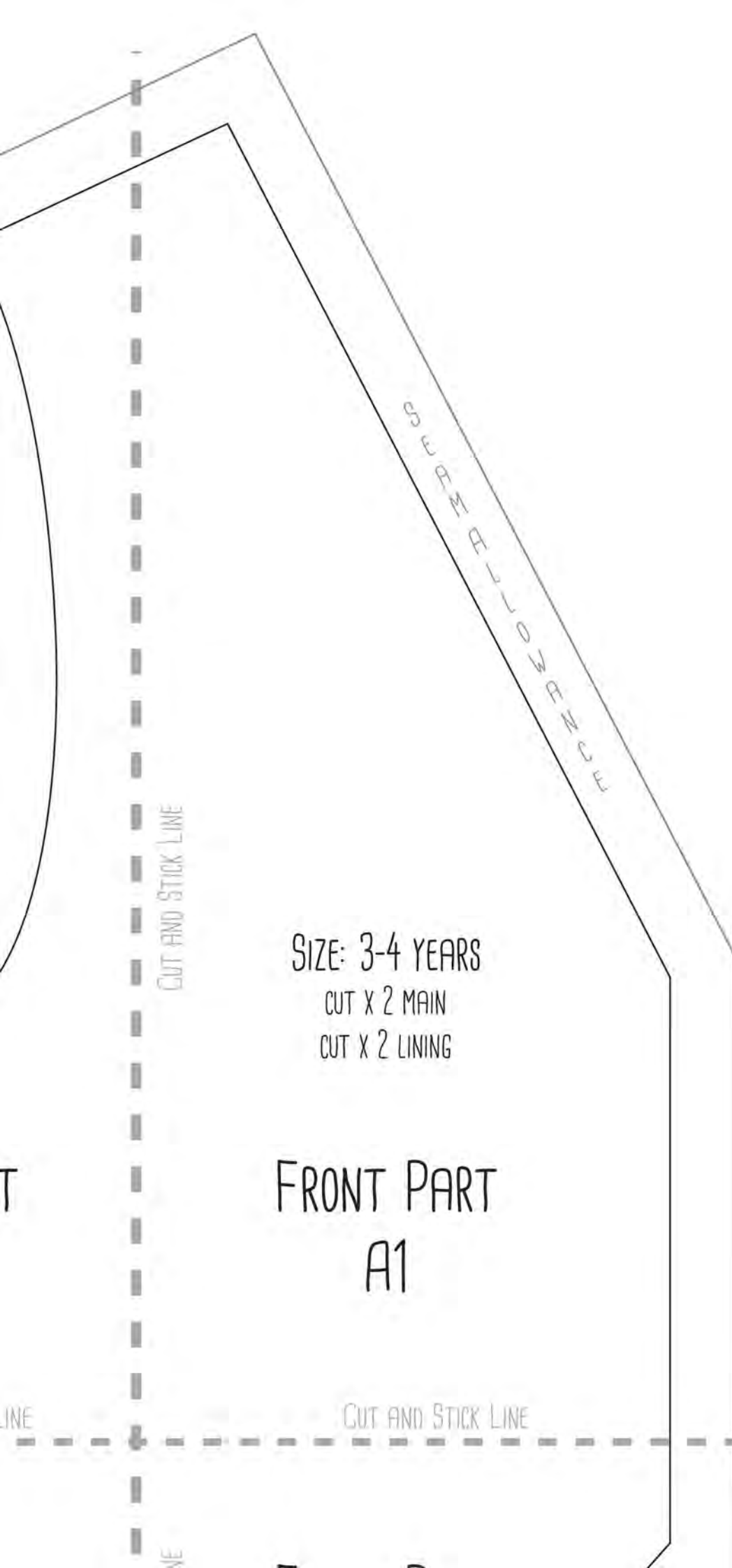


FRONT PART
A2

S
E
A
M
A
L
L
O
W
A
N
C
E

CUT AND STICK LINE

CUT AND STICK LINE



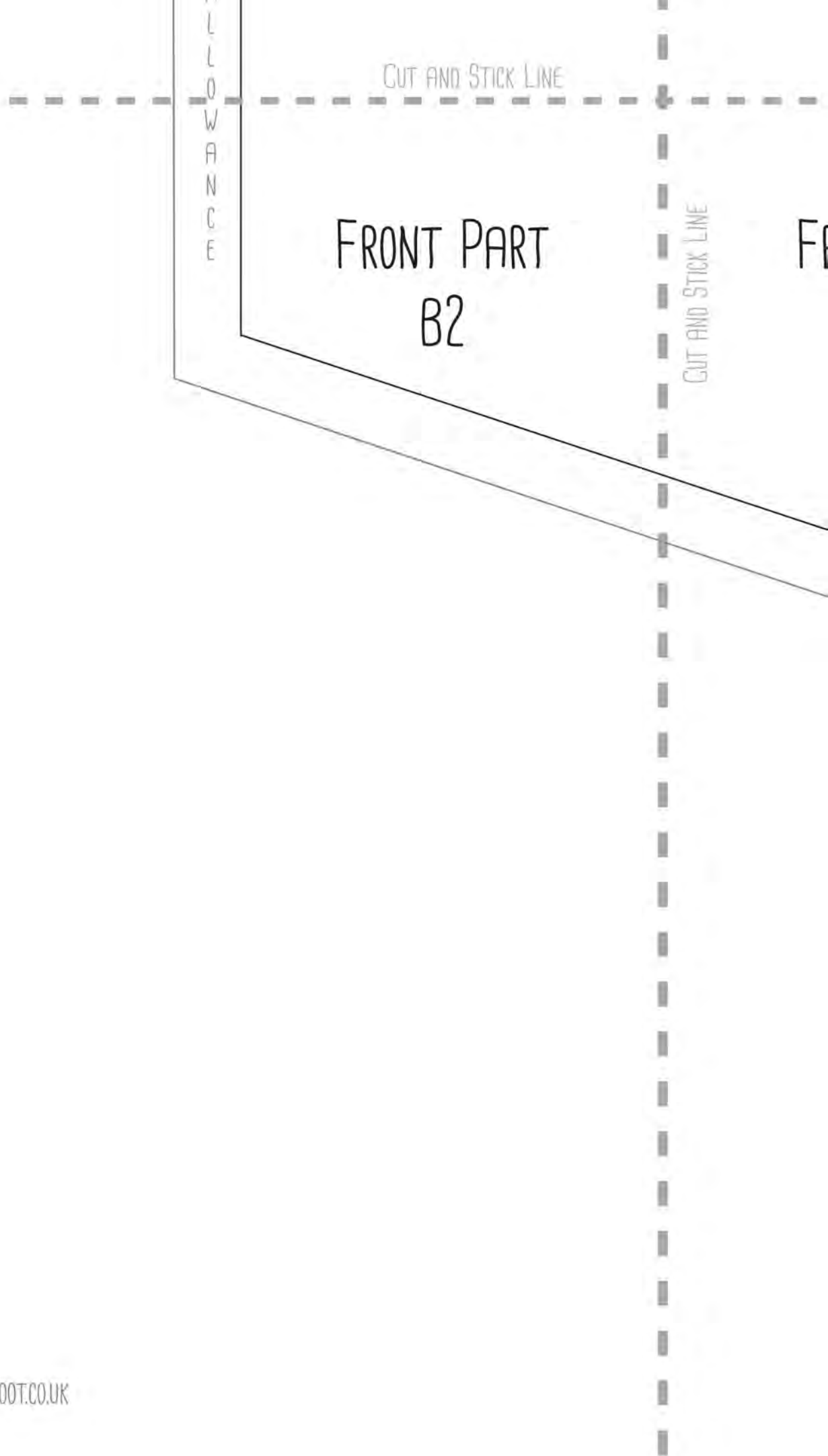
SEAM ALLOWANCE

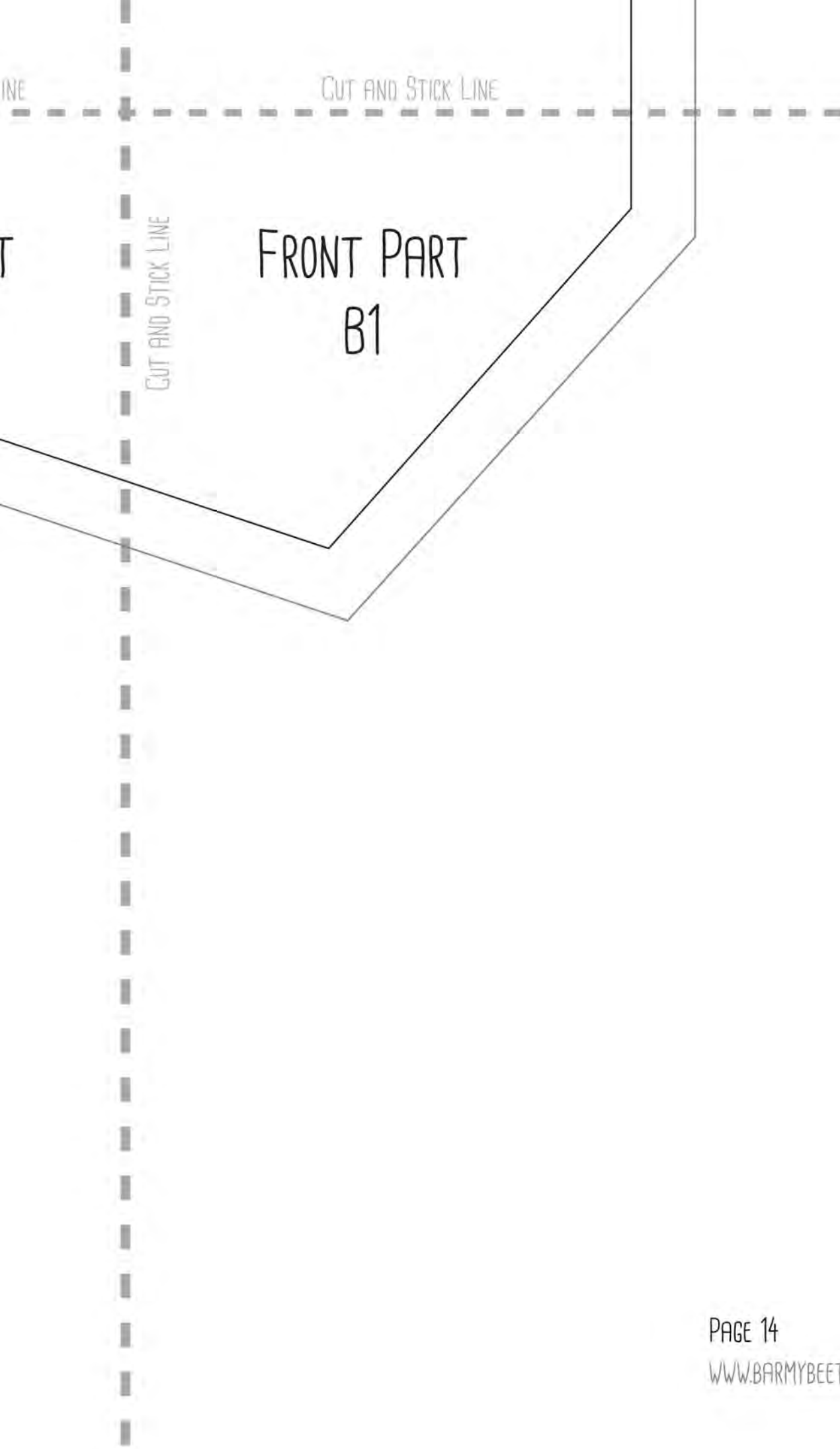
SIZE: 3-4 YEARS
CUT X 2 MAIN
CUT X 2 LINING

FRONT PART
A1

CUT AND STICK LINE

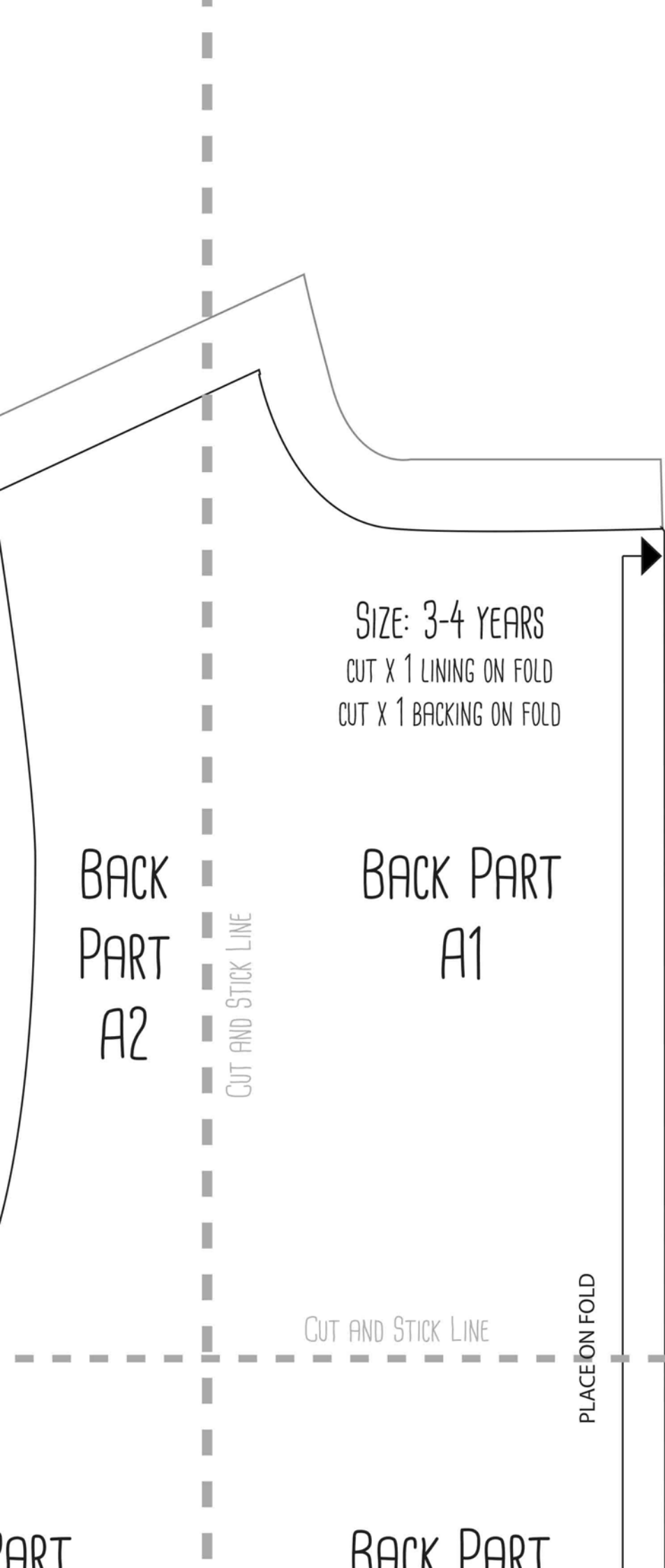
CUT AND STICK LINE





BACK
PART
A2

CUT AND STICK LINE



SIZE: 3-4 YEARS
CUT X 1 LINING ON FOLD
CUT X 1 BACKING ON FOLD

BACK
PART
A2

BACK PART
A1

CUT AND STICK LINE

CUT AND STICK LINE

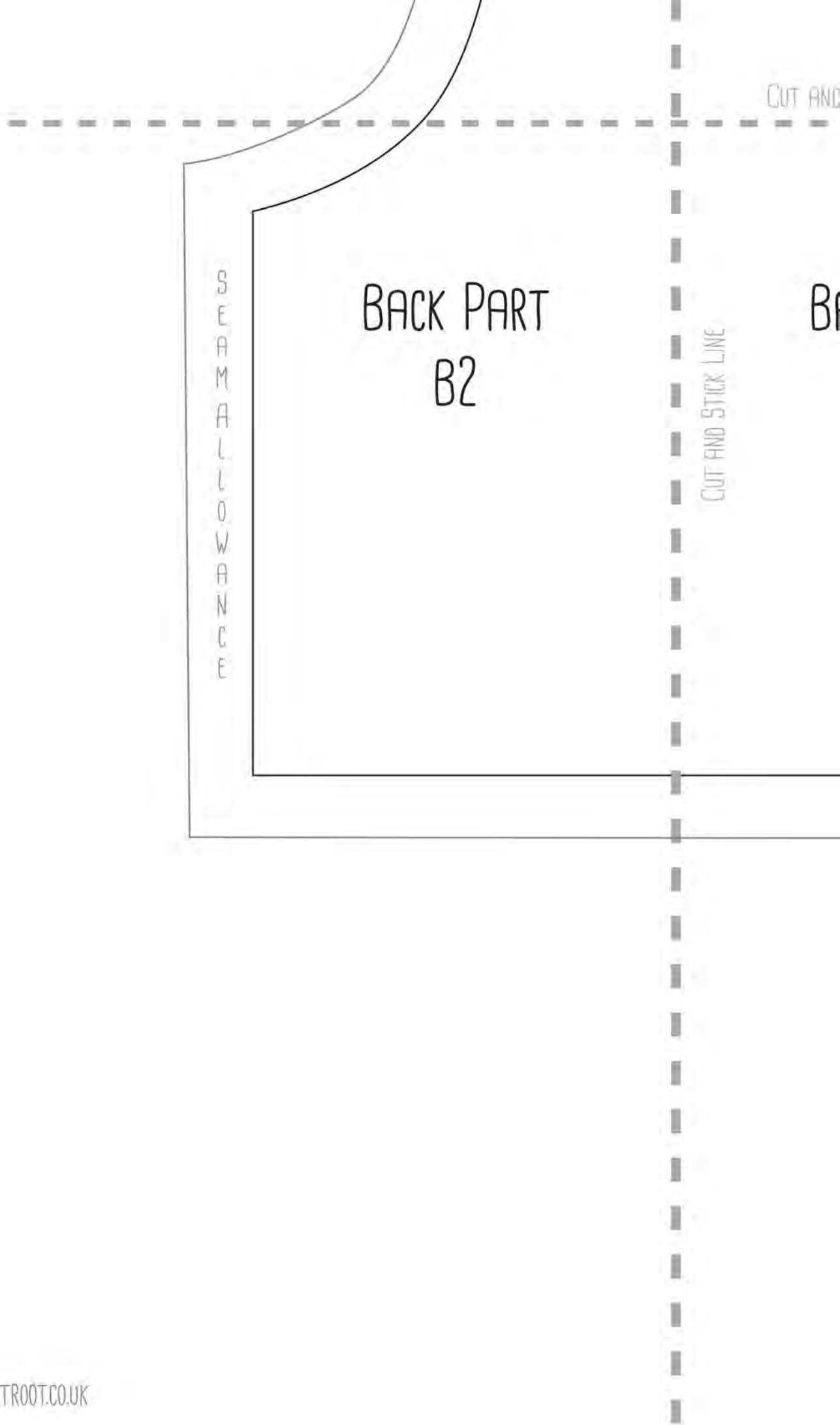
PLACE ON FOLD

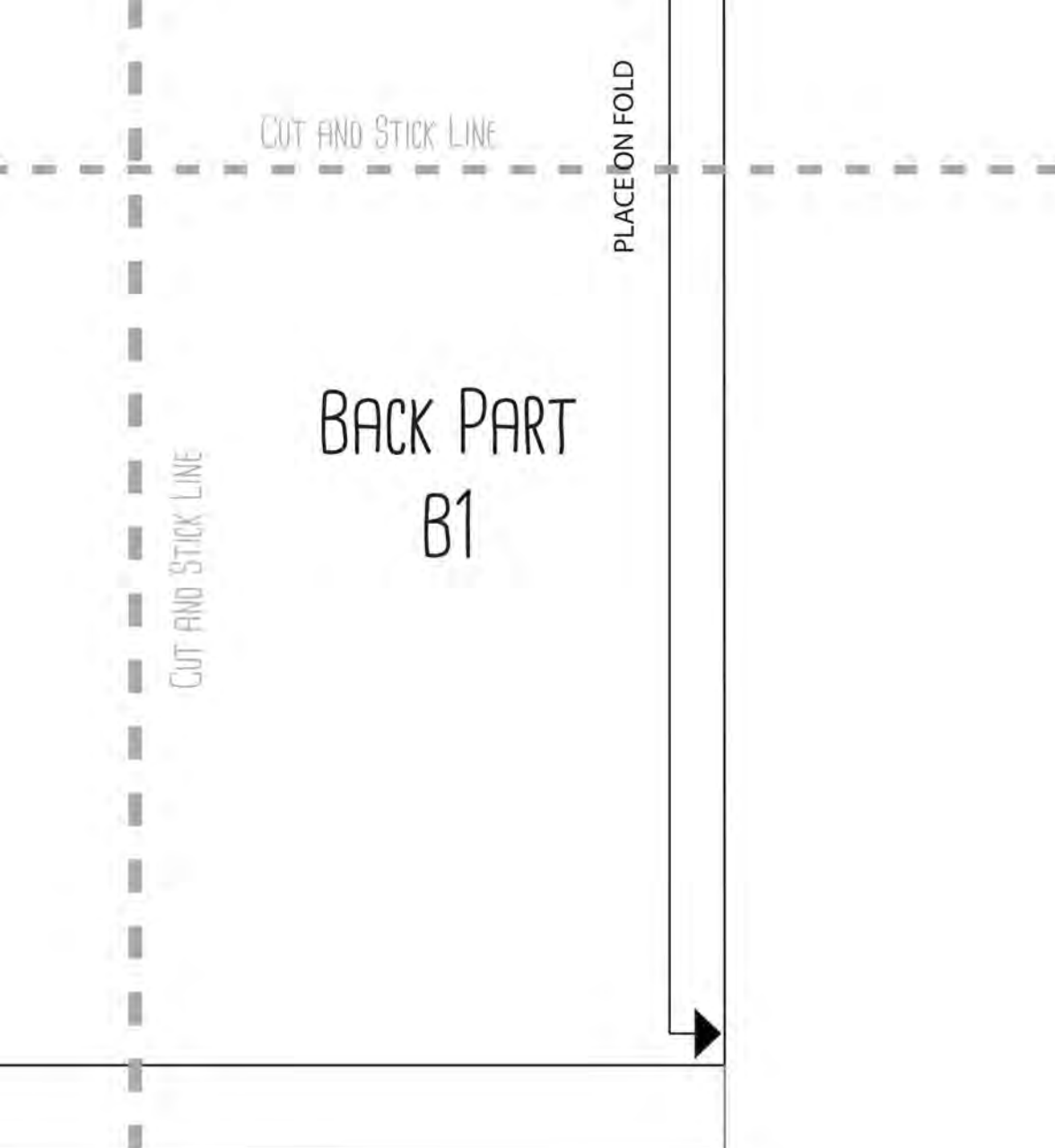
PAGE 16

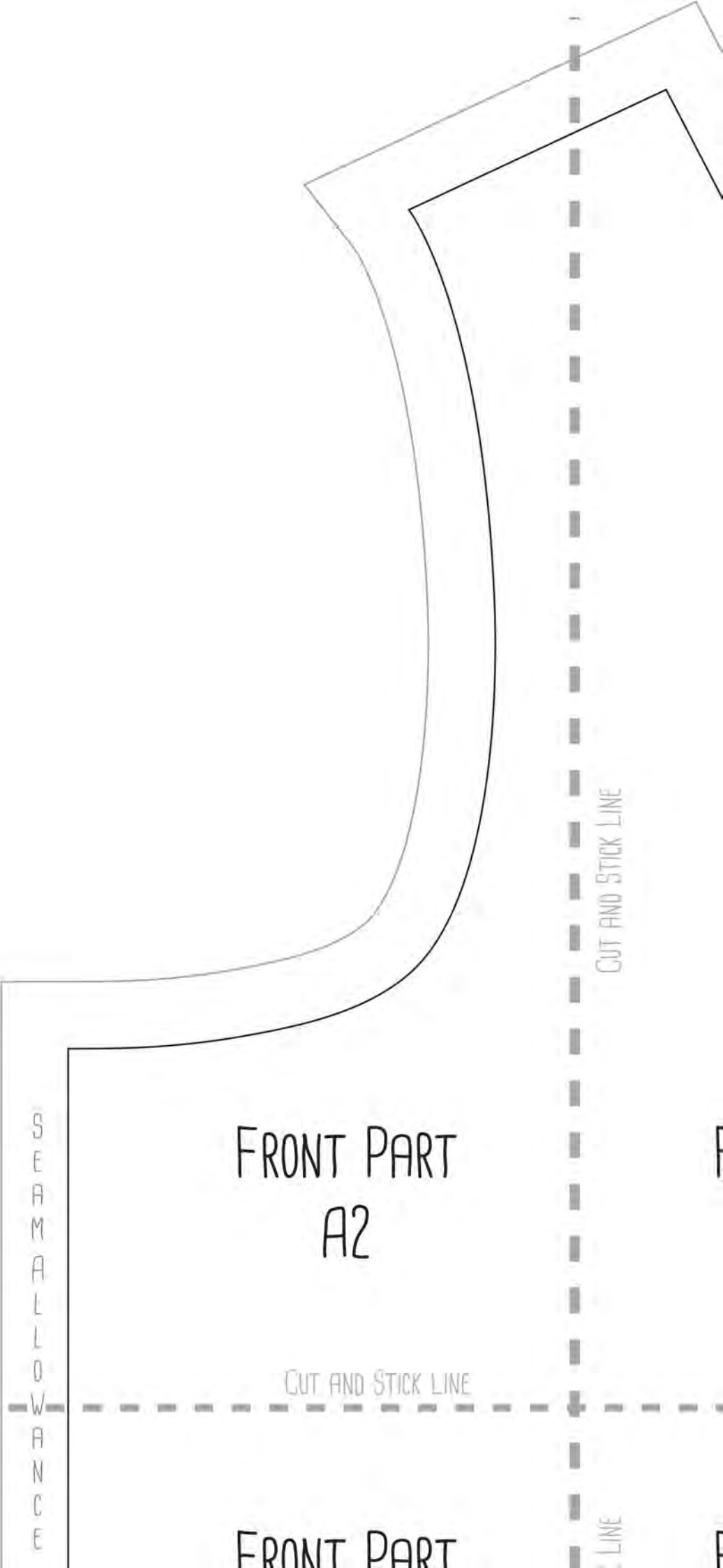
WWW.BARMYBEETROOT.CO.UK

PART

BACK PART







FRONT PART
A2

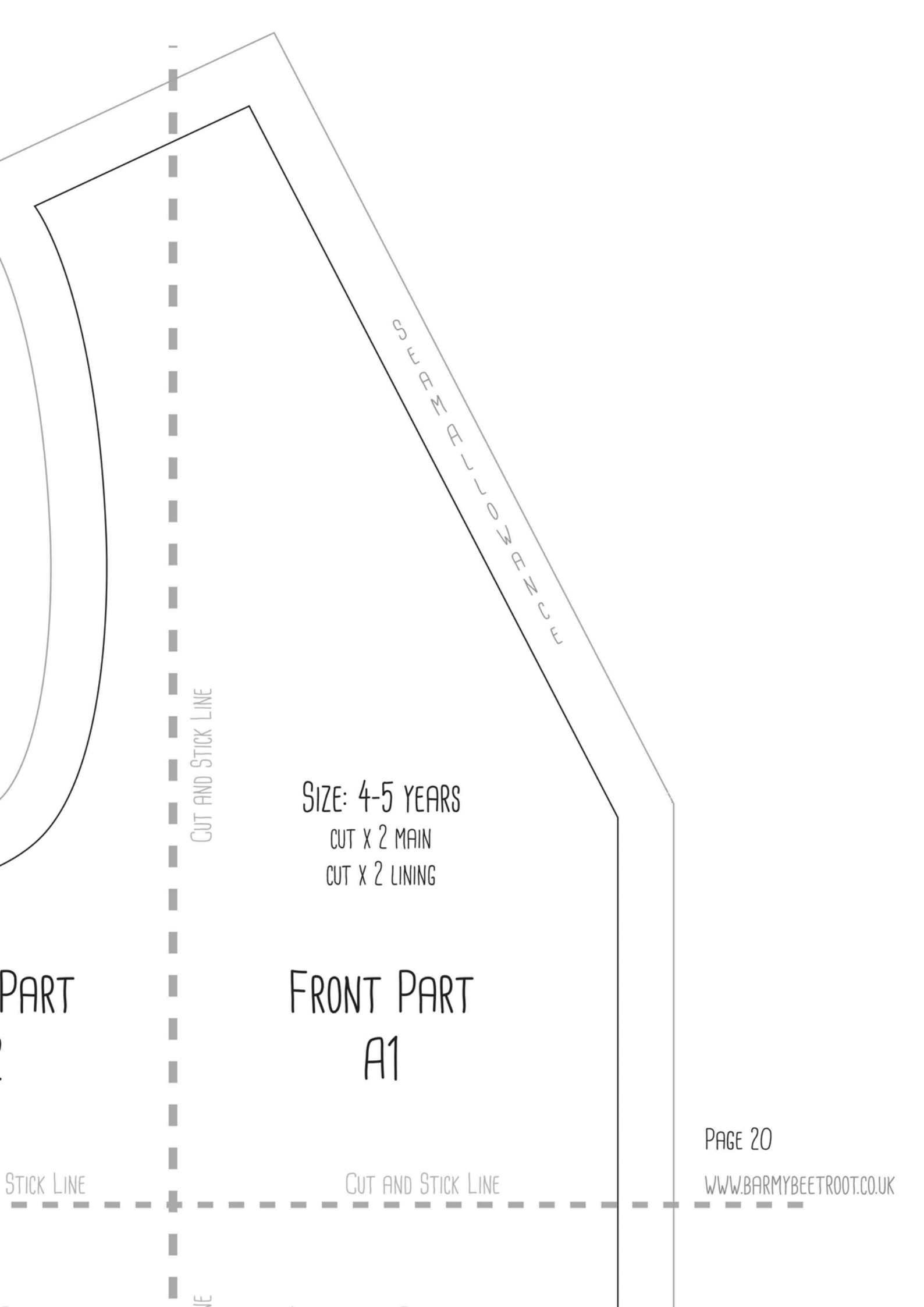
CUT AND STICK LINE

CUT AND STICK LINE

SEAM ALLOWANCE

FRONT PART

CUT AND STICK LINE



SEAM ALLOWANCE

CUT AND STICK LINE

SIZE: 4-5 YEARS
CUT X 2 MAIN
CUT X 2 LINING

FRONT PART
A1

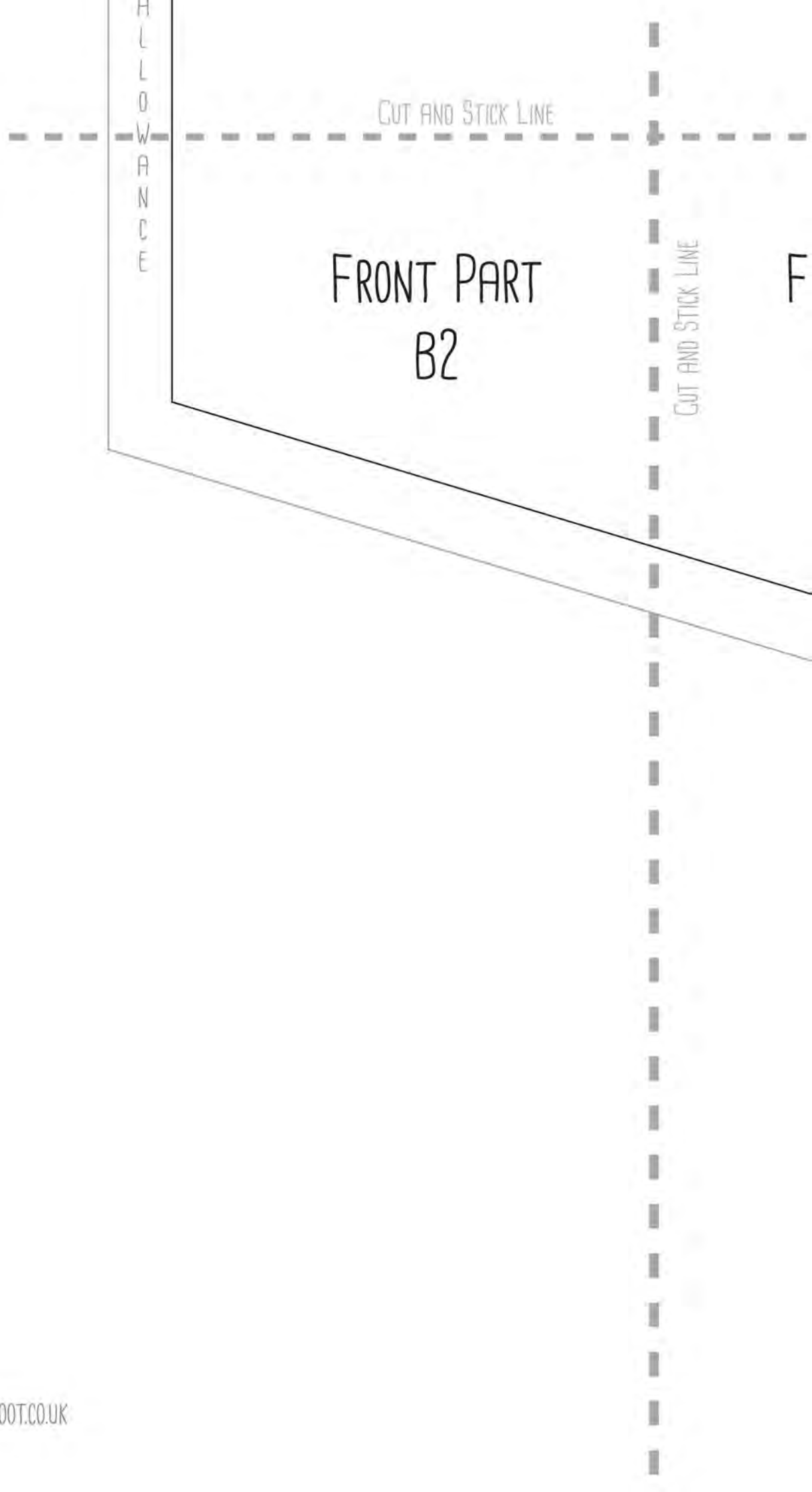
PART

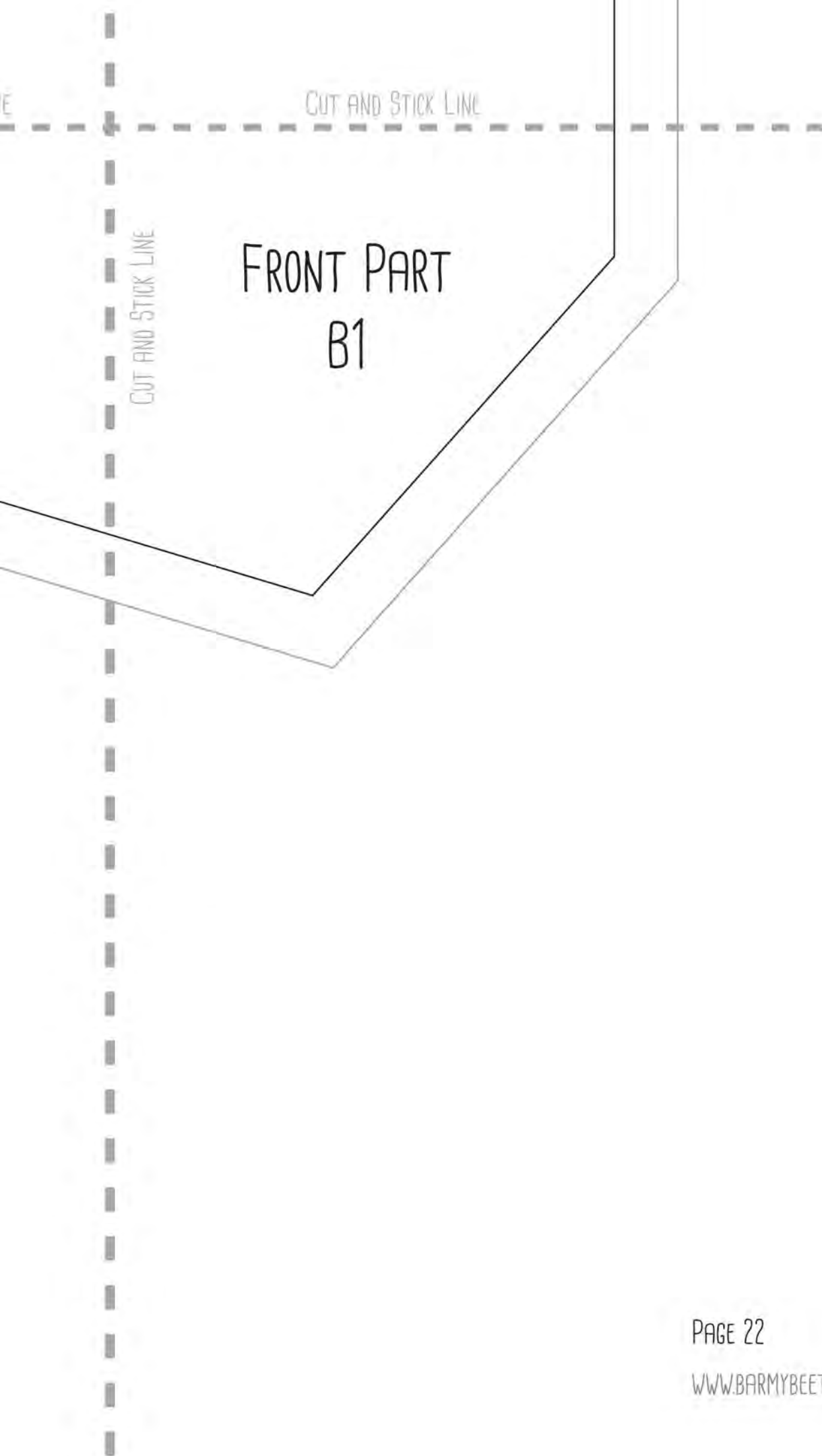
STICK LINE

CUT AND STICK LINE

PAGE 20

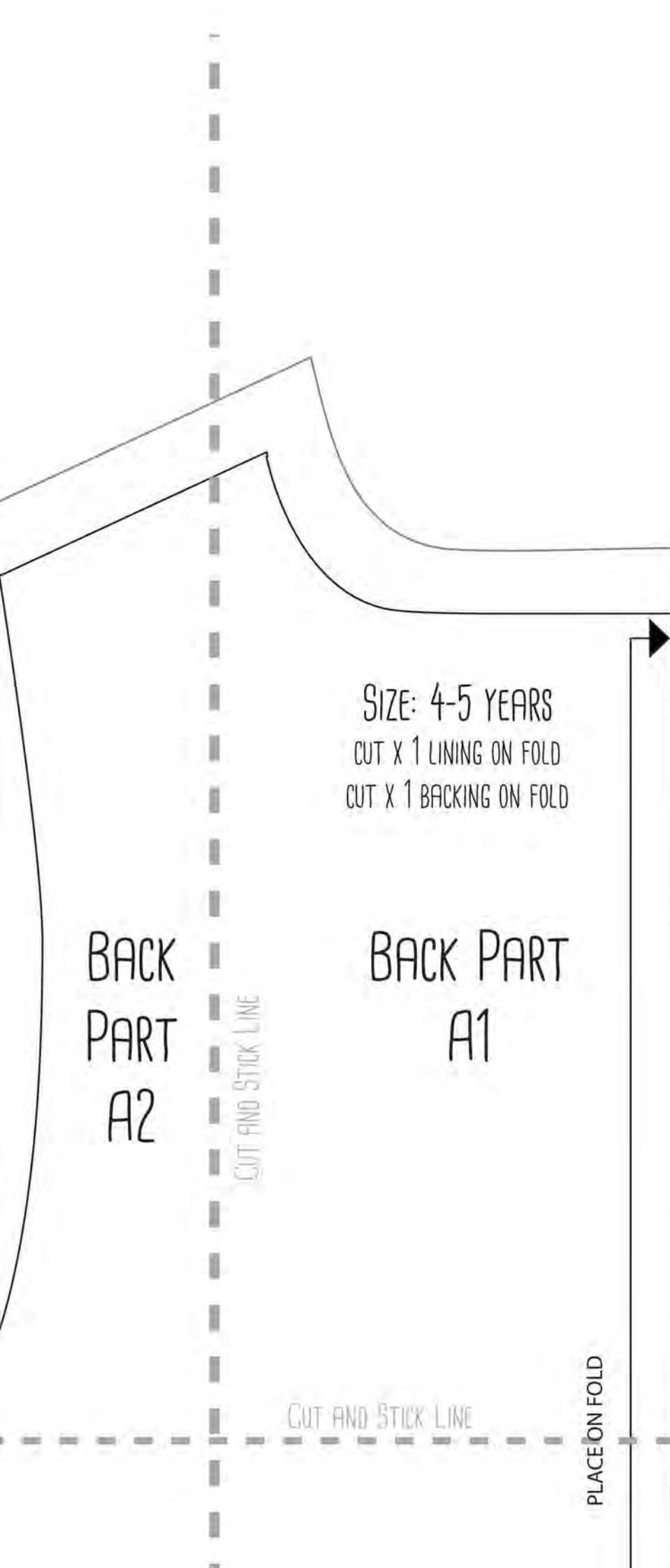
WWW.BARMYBEETROOT.CO.UK





BACK
PART
A2

CUT AND STICK LINE



SIZE: 4-5 YEARS
CUT X 1 LINING ON FOLD
CUT X 1 BACKING ON FOLD

BACK
PART
A2

BACK PART
A1

CUT AND STICK LINE

CUT AND STICK LINE

PLACE ON FOLD

PAGE 24

WWW.BARMYBEETROOT.CO.UK

