

Wrap-around top

by immi

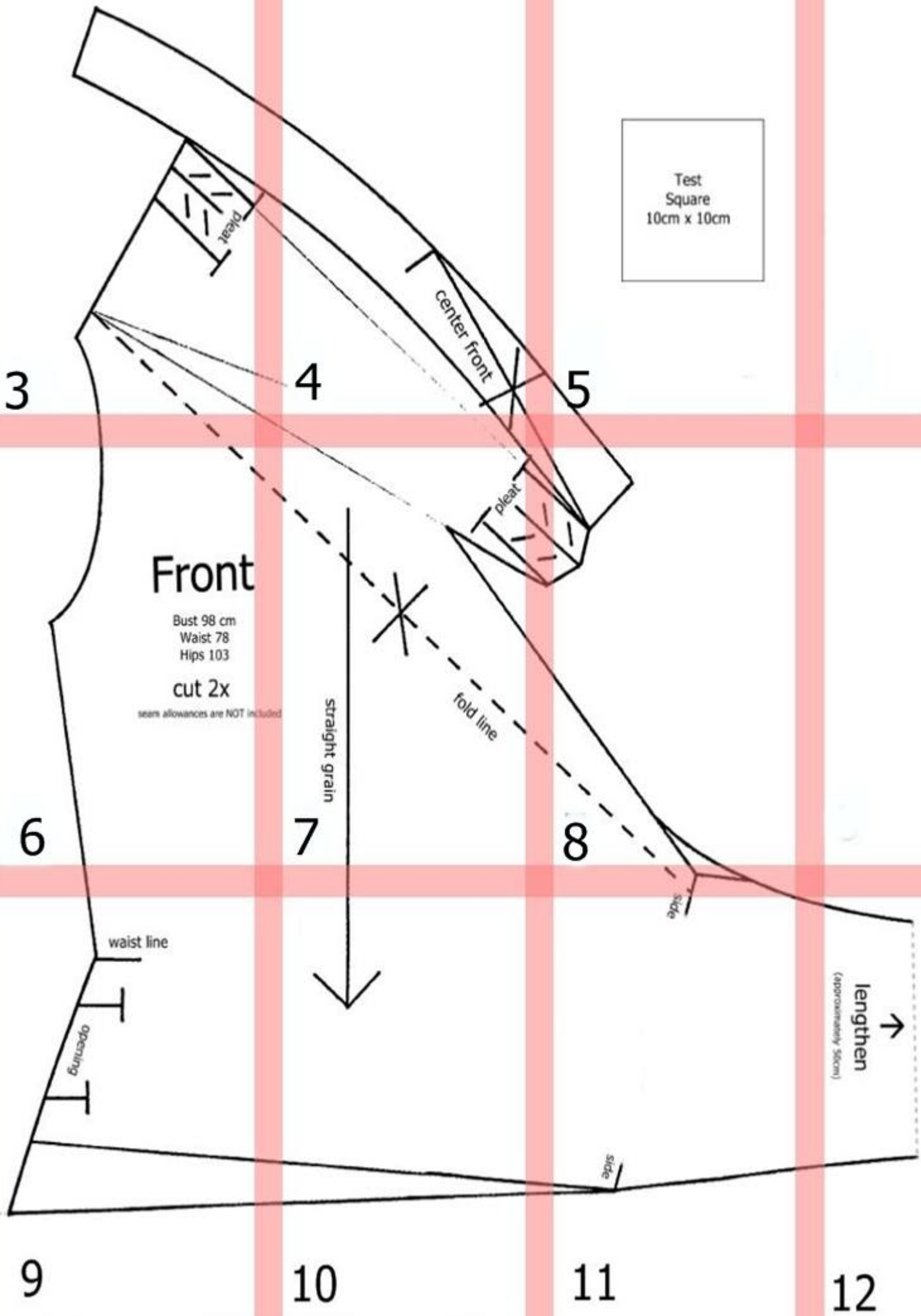


German size 42



Please DO NOT republish or distribute this pattern without my permission.

Test Square
10cm x 10cm



Front

Bust 98 cm
Waist 78
Hips 103

cut 2x

seam allowances are NOT included

straight grain

fold line

waist line

opening

side

side

lengthen
(approximately 50cm)

3

4

5

6

7

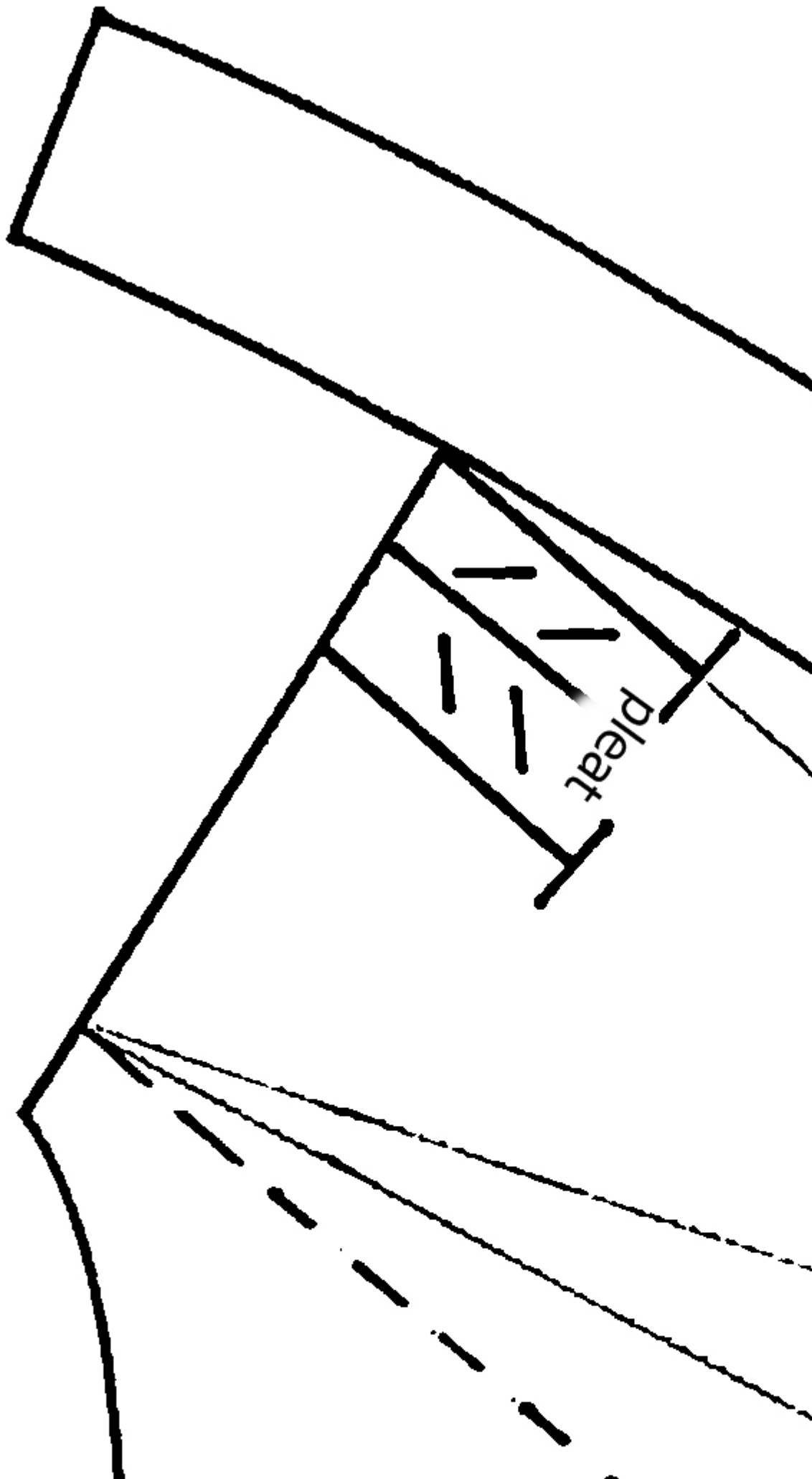
8

9

10

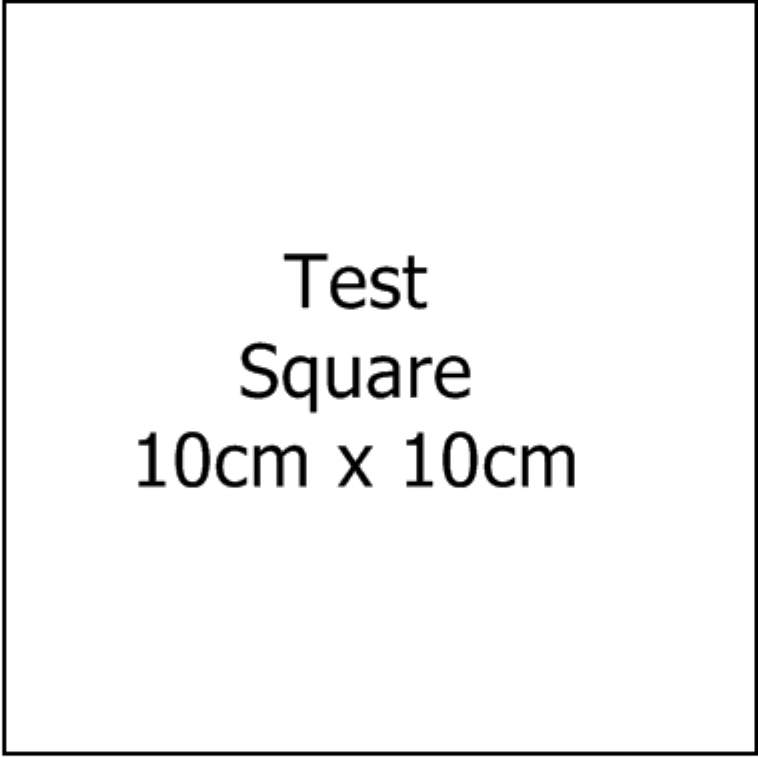
11

12



A hand-drawn technical diagram of a garment pattern piece, likely a bodice or skirt front. The diagram consists of several lines: a top curved line, a bottom curved line, and a central vertical line. A horizontal line is drawn across the middle, and a vertical line is drawn from the bottom center to the middle horizontal line. The text "center front" is written vertically along the central vertical line. A small tick mark is present on the top curved line, and another tick mark is on the bottom curved line. The drawing is done in black ink on a white background.

center front



Test
Square
10cm x 10cm



Front

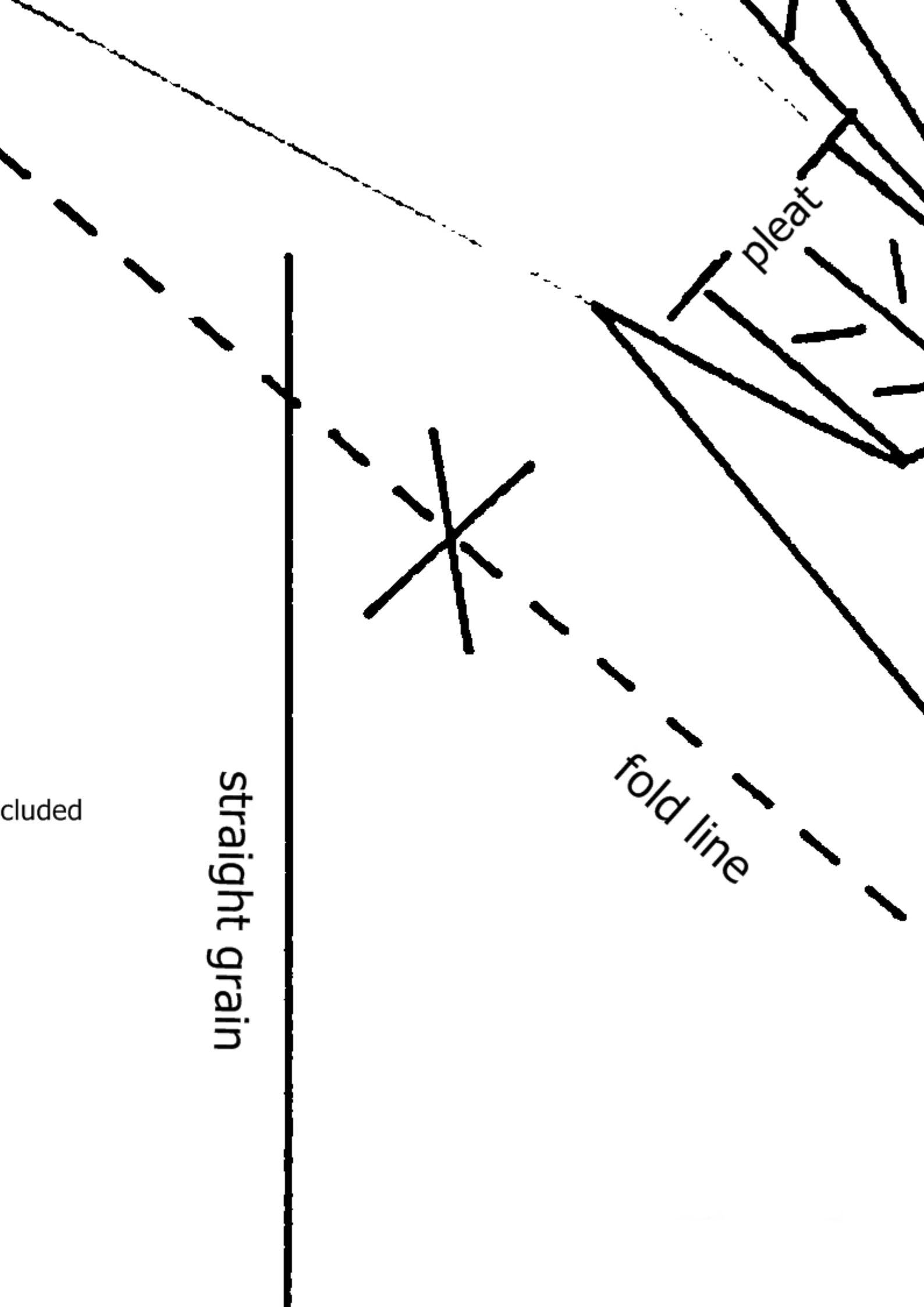
Bust 98 cm

Waist 78

Hips 103

cut 2x

seam allowances are NOT included

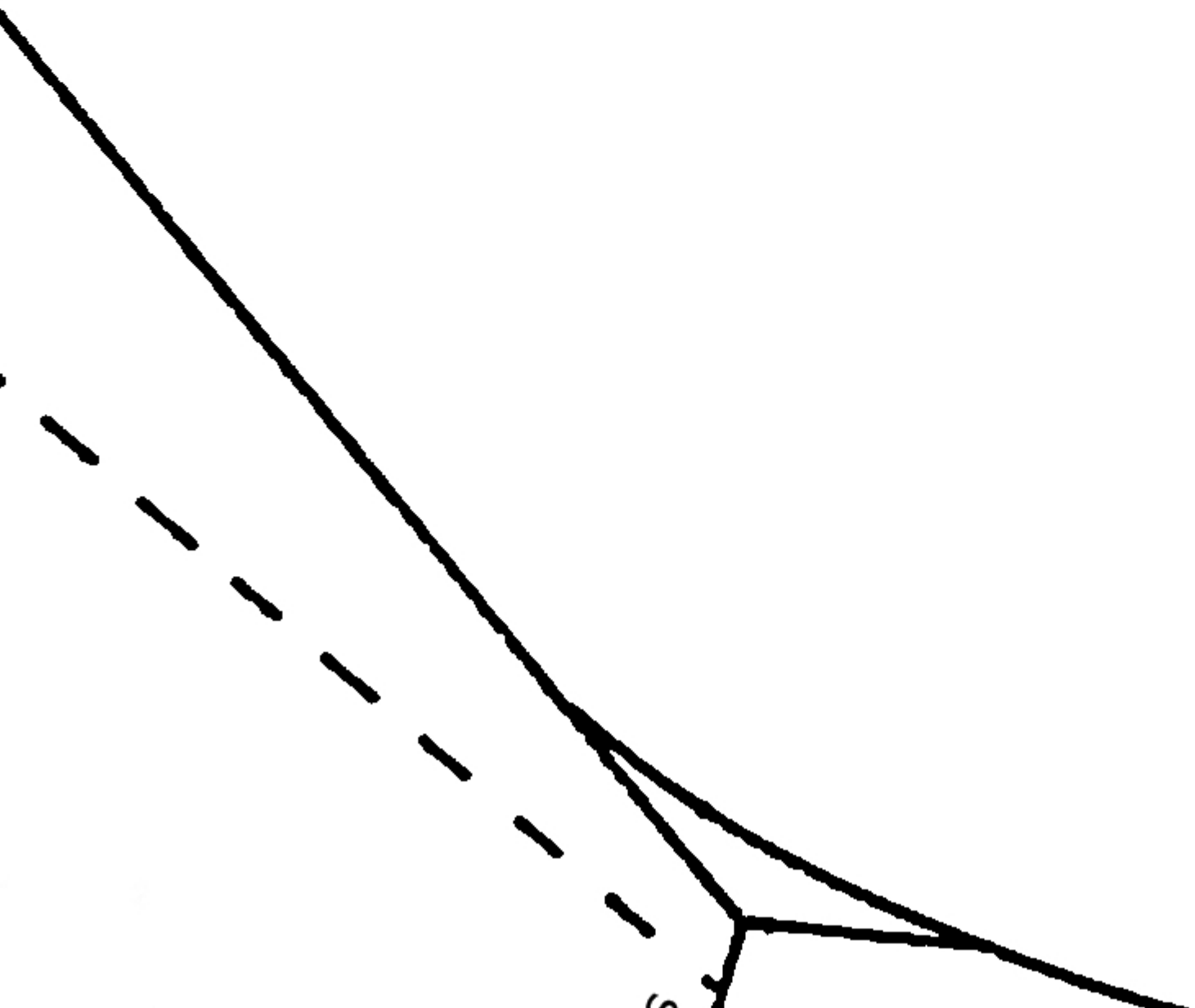
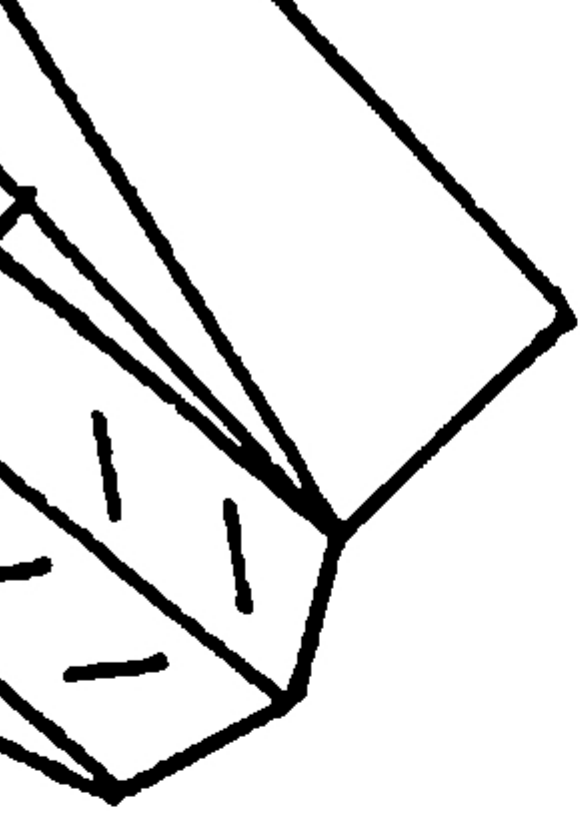


pleat

fold line

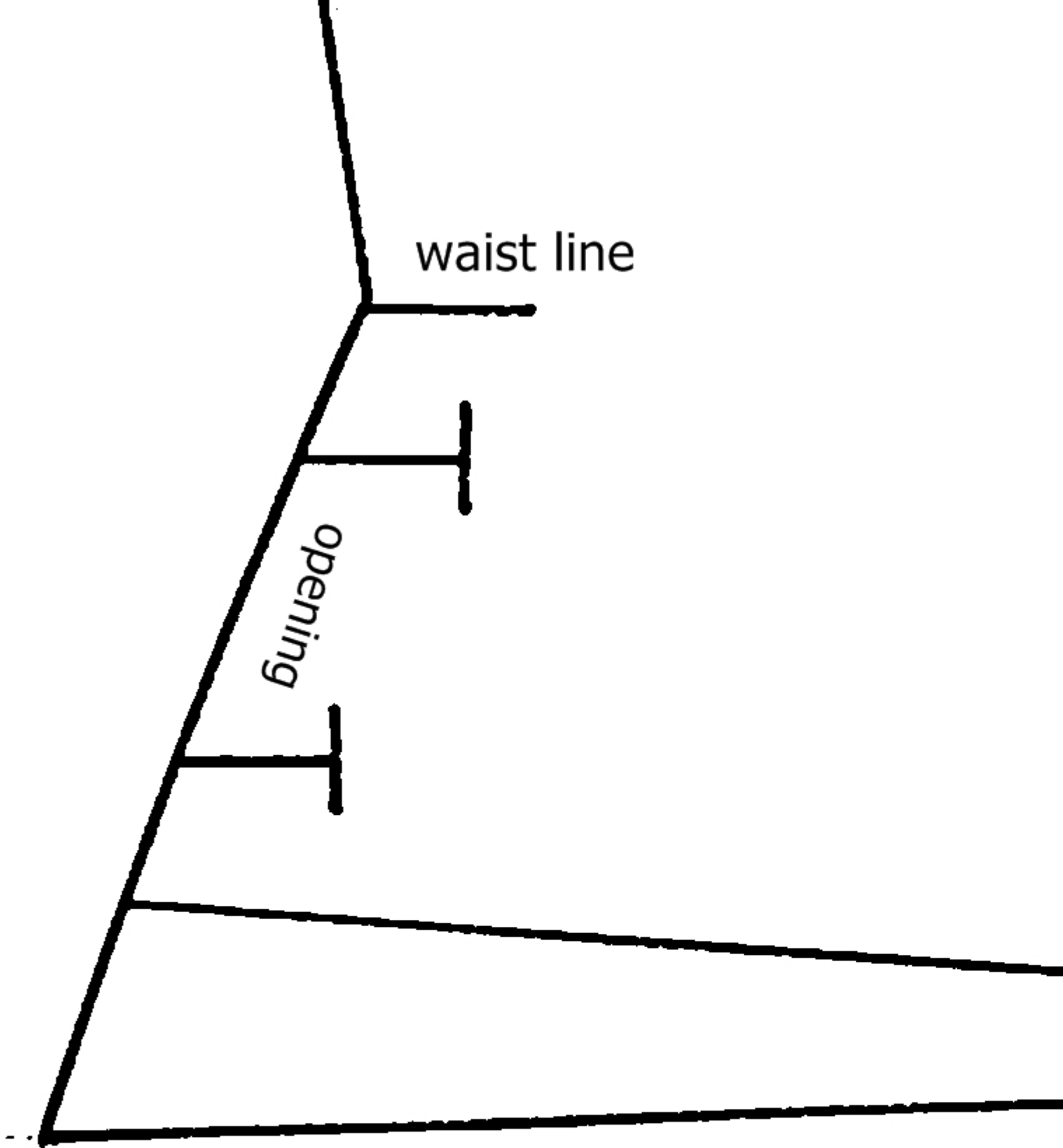
straight grain

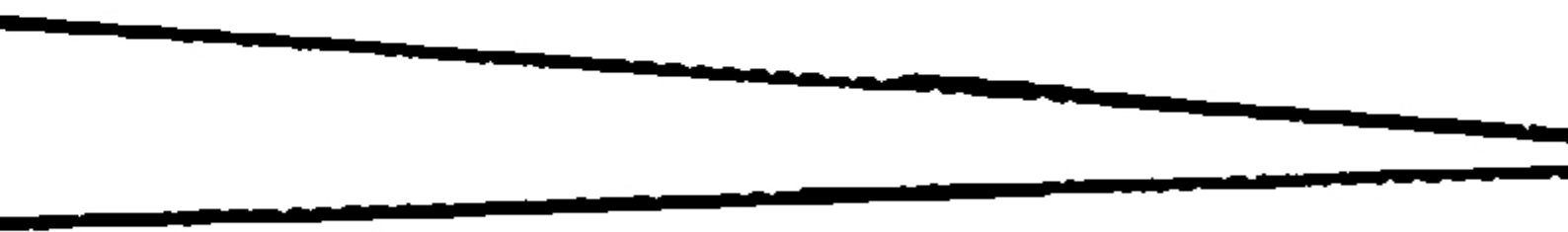
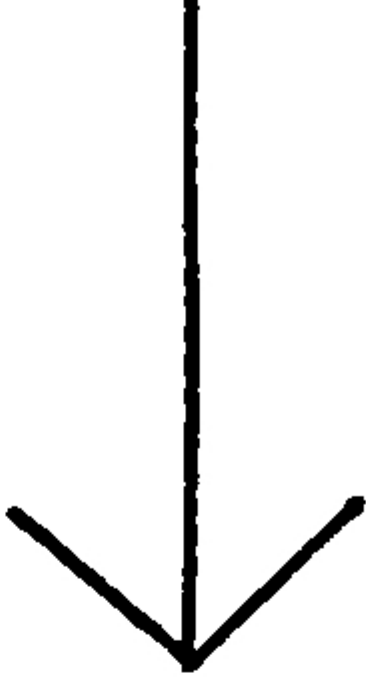
cluded



waist line

opening







A hand-drawn diagram on a white background. It features two main lines: a horizontal line at the bottom and a vertical line on the right. A short line segment connects the horizontal line to the vertical line. The word "side" is written vertically next to each of these two segments. There are also some faint, light-colored lines and marks scattered across the page.

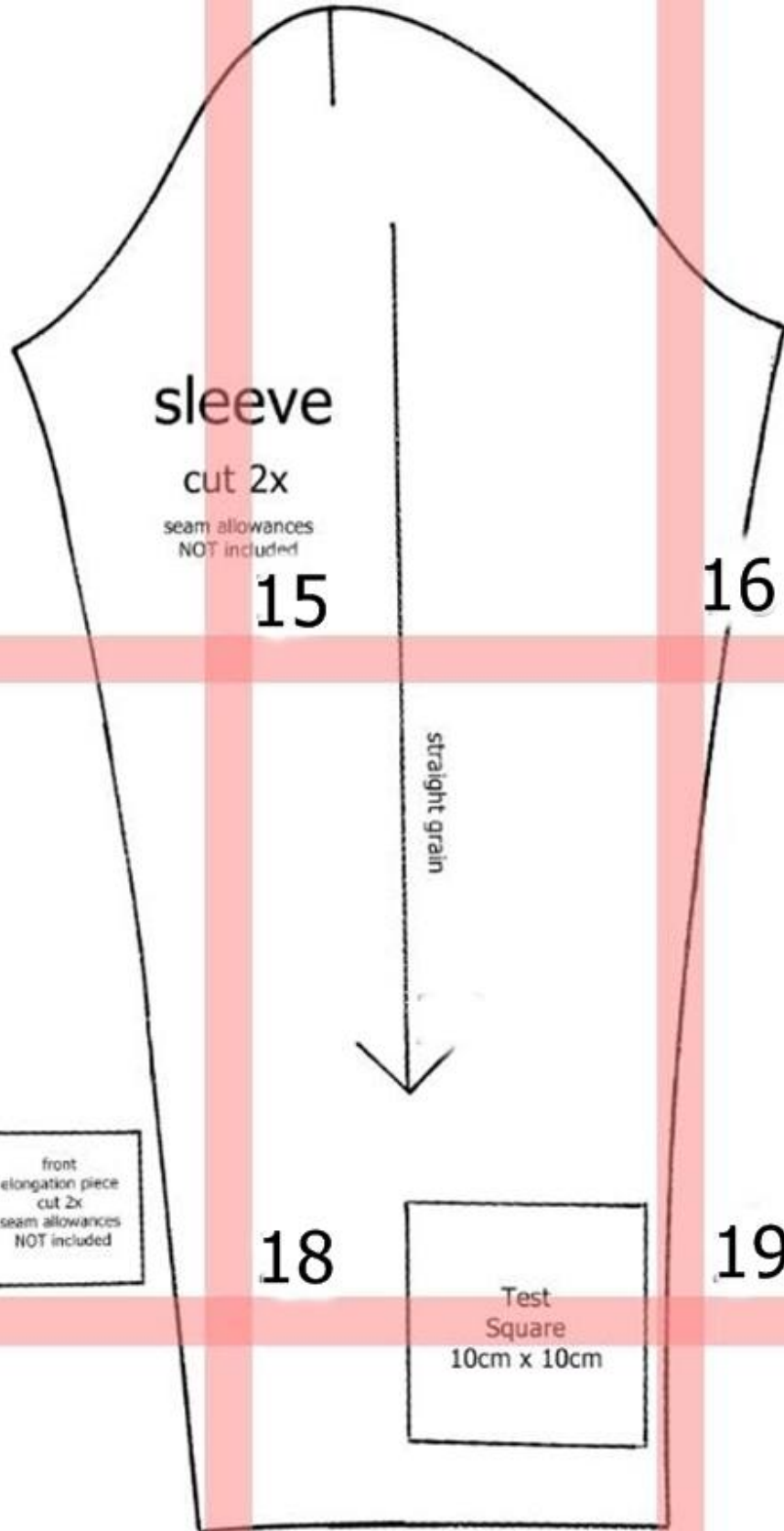
side

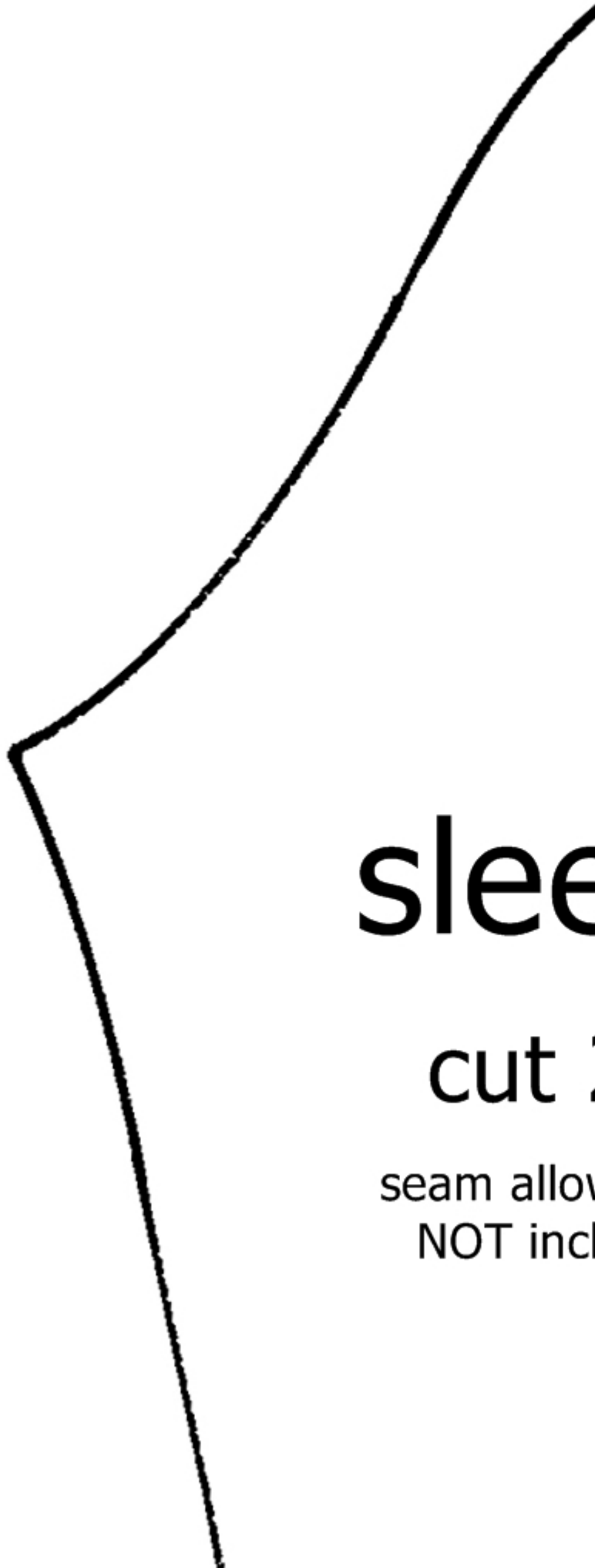
side



lengthen

(approximately 50cm)

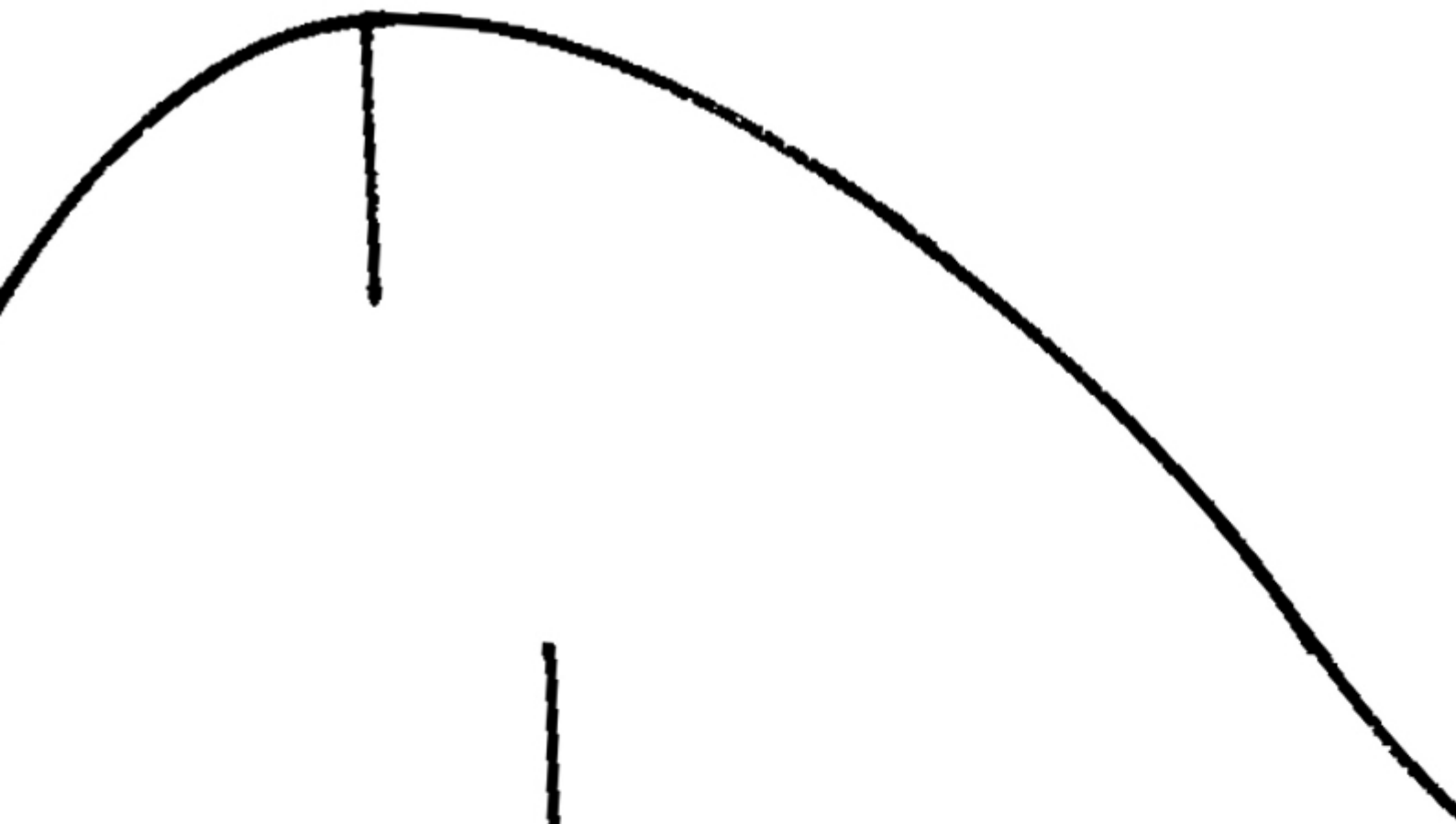




sleeve

cut 2

seam allow
NOT incl




eeve

ut 2x

n allowances
OT included



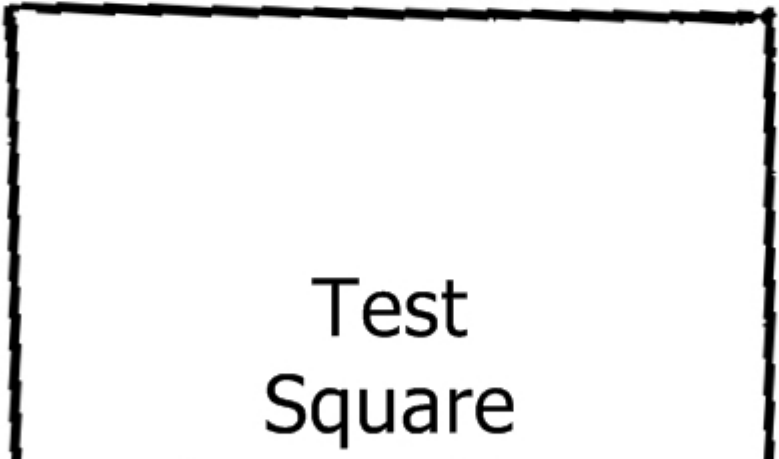


front
elongation piece
cut 2x
seam allowances
NOT included

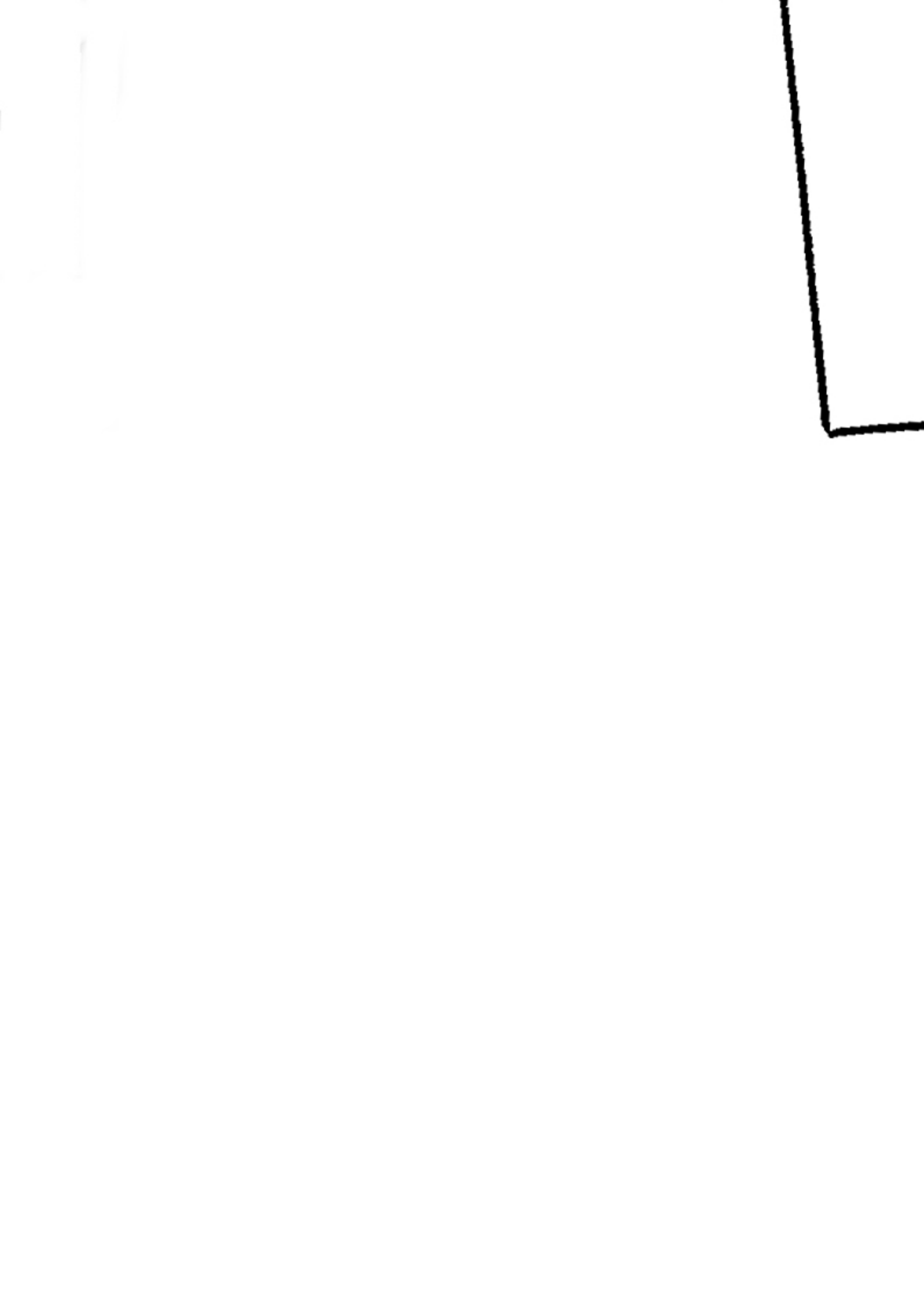
straight grain



Test
Square







Test
Square
10cm x 10cm



Test Square
10cm x 10cm

Back

bust 98 cm
waist 78 cm
hips 103 cm

cut 1x on fold
seam allowances are included

24

25

waist line

center back - fabric fold

27

opening

28

longer length

shorter length

26

lapel / facing

cut 2x

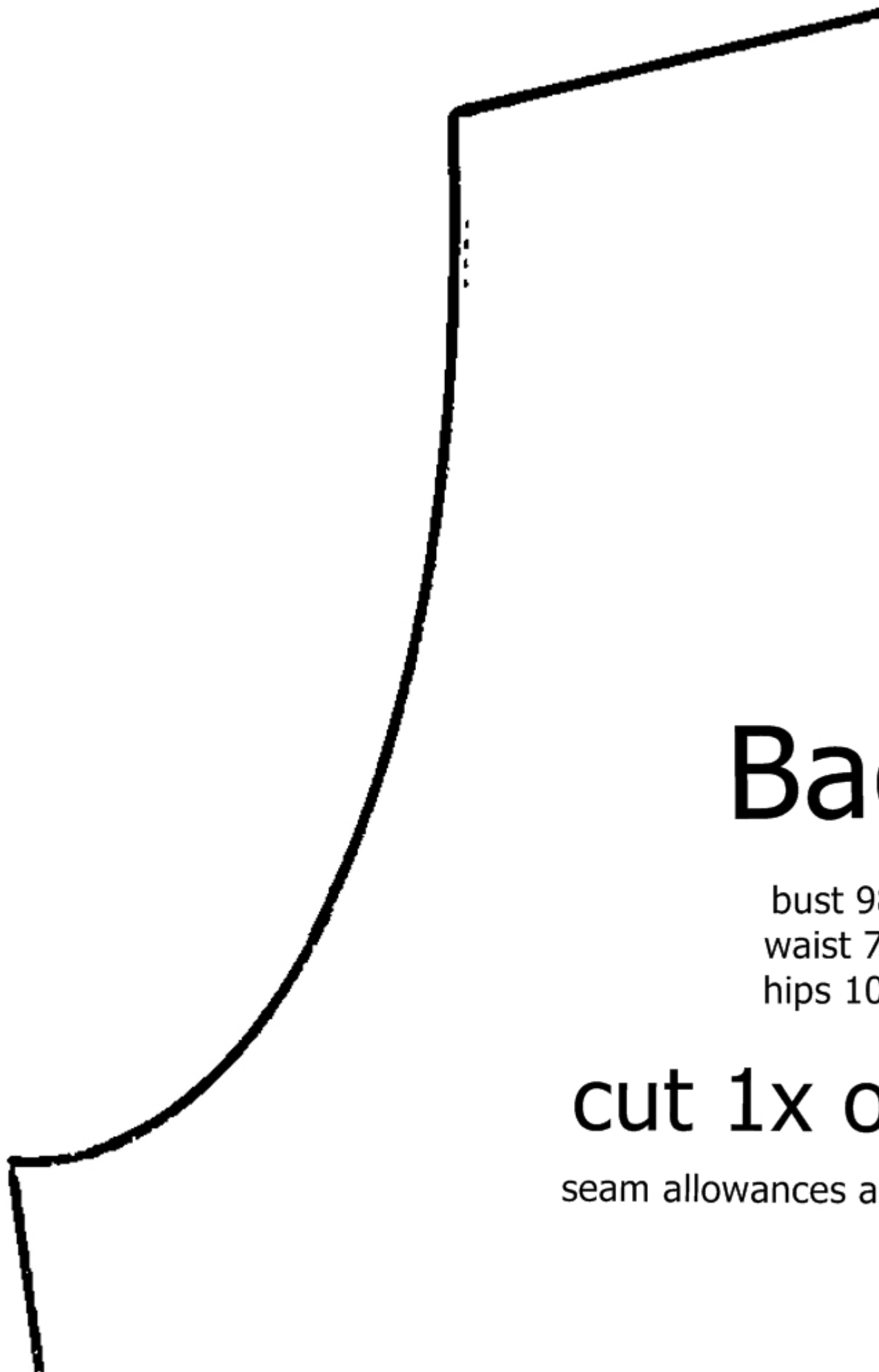
seam allowances are NOT included

29

30

31

32



Back

bust 9
waist 7
hips 10

cut 1x o

seam allowances a



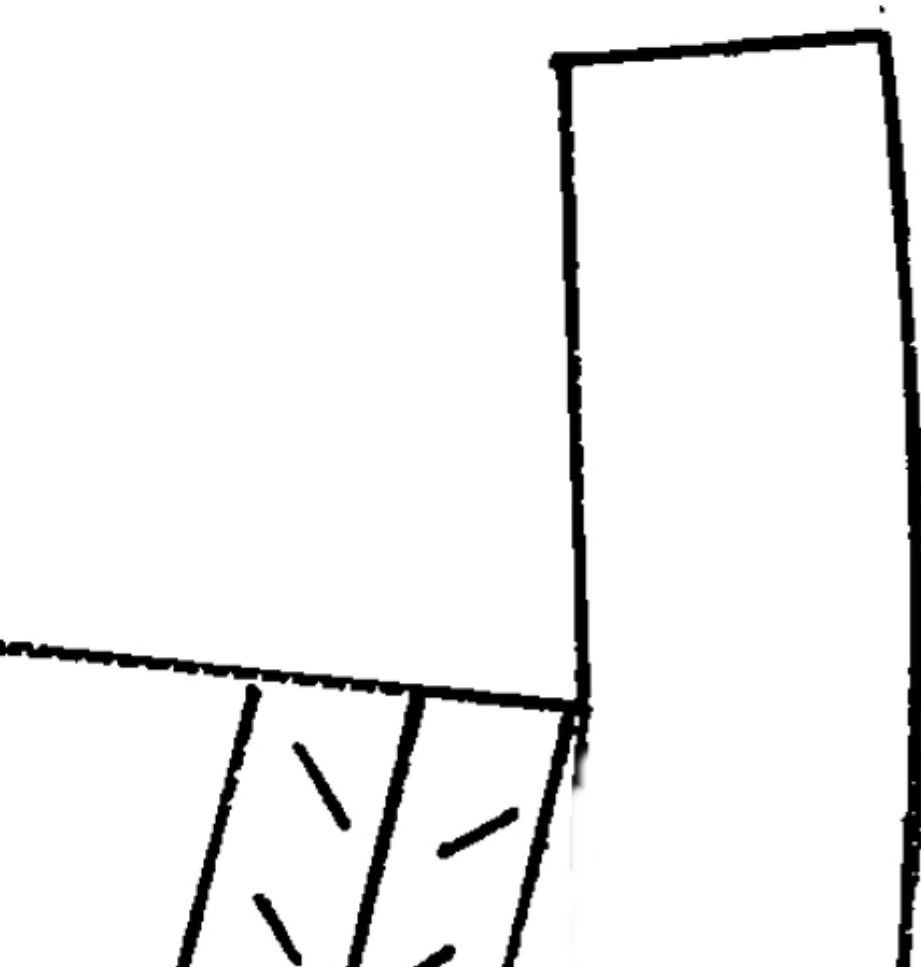
Back

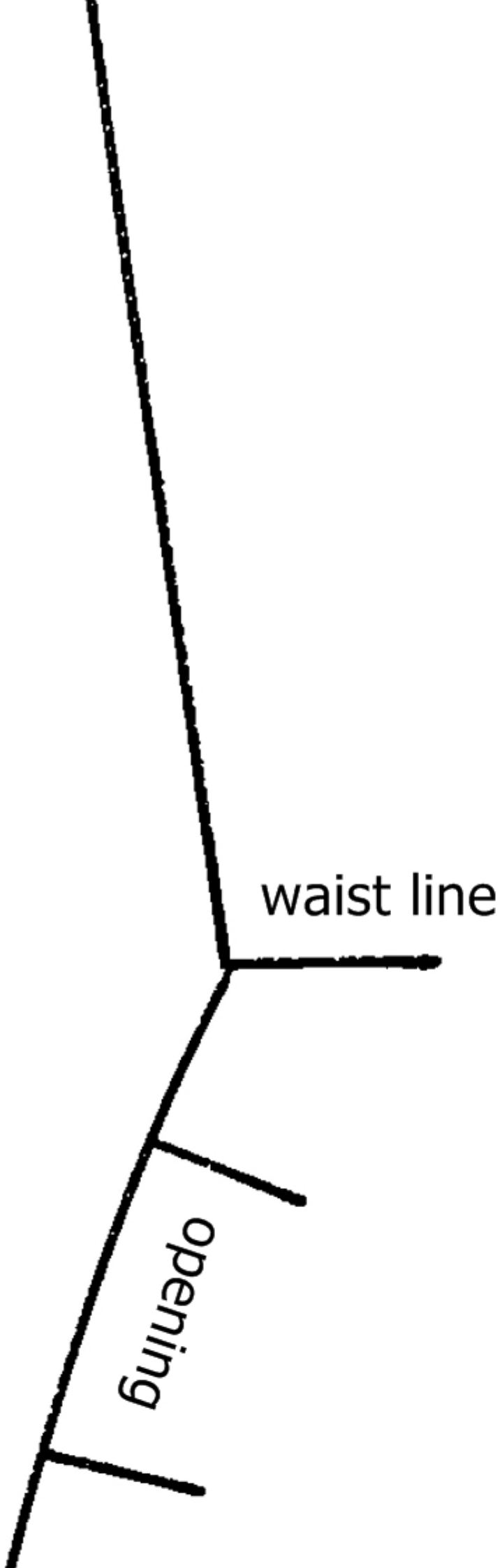
bust 98 cm
waist 78 cm
hips 103 cm

Size on fold

Measurements are NOT included

Test Square
10cm x 10cm





waist line

opening

lapel /

cut 2

seam allowances are

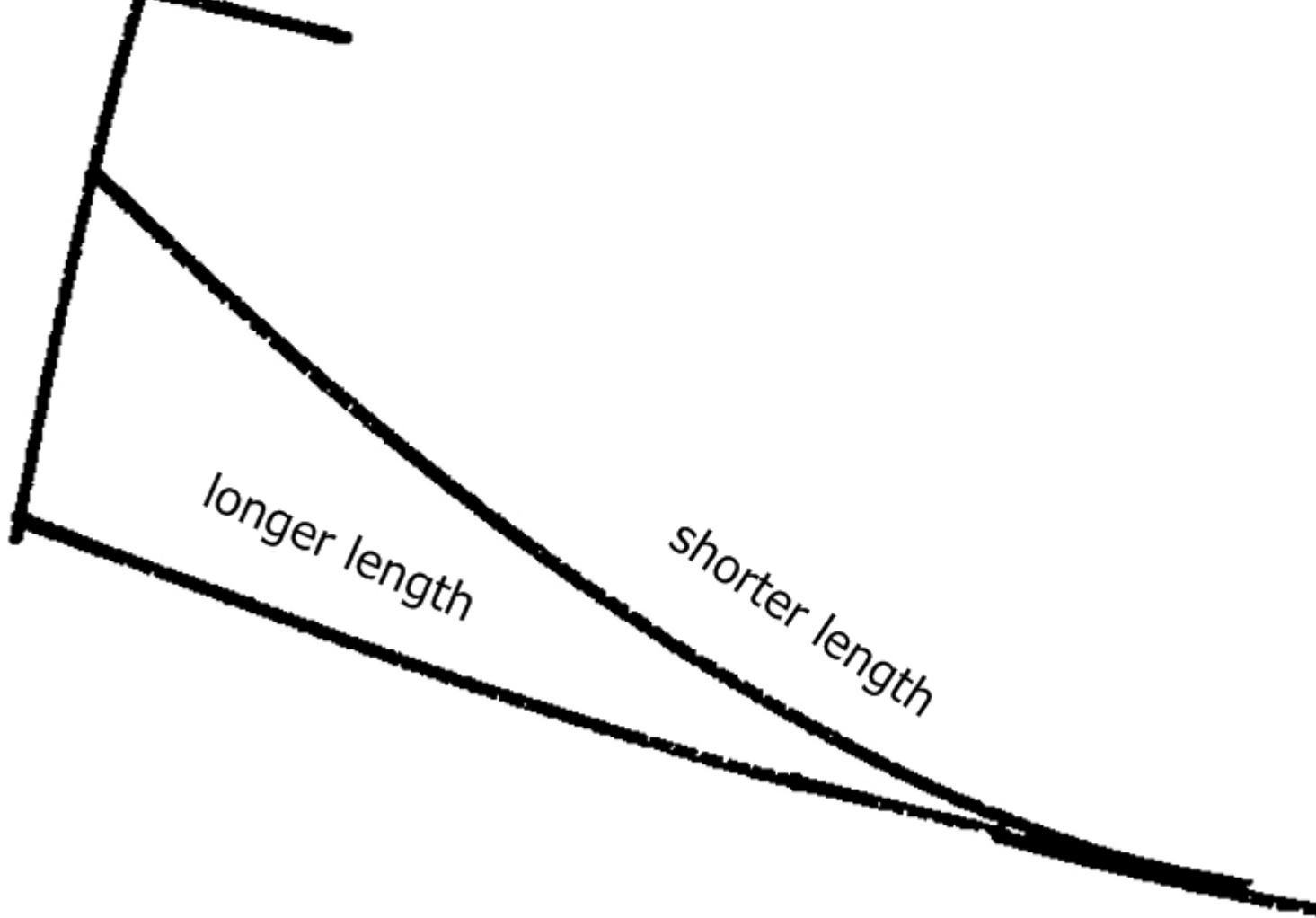
center back - fabric fold



el / facing

it 2x

ces are NOT included



longer length

shorter length

